



Claudin-5 Polyclonal Antibody

| | |
|---------------------------|--|
| Catalog No | BYab-16961 |
| Isotype | IgG |
| Reactivity | Human;Mouse;Rat |
| Applications | WB;IHC;IF;ELISA |
| Gene Name | CLDN5 |
| Protein Name | Claudin-5 |
| Immunogen | The antiserum was produced against synthesized peptide derived from human Claudin 5. AA range:169-218 |
| Specificity | Claudin-5 Polyclonal Antibody detects endogenous levels of Claudin-5 protein. |
| Formulation | Liquid in PBS containing 50% glycerol, 0.5% BSA and 0.02% sodium azide. |
| Source | Polyclonal, Rabbit,IgG |
| Purification | The antibody was affinity-purified from rabbit antiserum by affinity-chromatography using epitope-specific immunogen. |
| Dilution | Western Blot: 1/500 - 1/2000. IHC-p: 1:100-300 ELISA: 1/20000. IF 1:100-300 Not yet tested in other applications. |
| Concentration | 1 mg/ml |
| Purity | ≥90% |
| Storage Stability | -20°C/1 year |
| Synonyms | CLDN5; AWAL; TMVCF; Claudin-5; Transmembrane protein deleted in VCFS; TMDVCF |
| Observed Band | 23kD |
| Cell Pathway | Cell junction, tight junction. Cell membrane; Multi-pass membrane protein. |
| Tissue Specificity | Adipose tissue,Brain,Lung,Prostate, |
| Function | function:Plays a major role in tight junction-specific obliteration of the intercellular space.,similarity:Belongs to the claudin family.,subunit:Directly interacts with TJP1/ZO-1, TJP2/ZO-2 and TJP3/ZO-3. Interacts with MPDZ., |
| Background | This gene encodes a member of the claudin family. Claudins are integral membrane proteins and components of tight junction strands. Tight junction strands serve as a physical barrier to prevent solutes and water from passing freely through the paracellular space between epithelial or endothelial cell sheets. Mutations in this gene have been found in patients with velocardiofacial syndrome. Alternatively spliced transcript variants encoding the same protein |

Nanjing BYabscience technology Co.,Ltd



have been found for this gene. [provided by RefSeq, Aug 2008],

matters needing attention

Avoid repeated freezing and thawing!

Usage suggestions

This product can be used in immunological reaction related experiments. For more information, please consult technical personnel.

Nanjing BYabscience technology Co.,Ltd

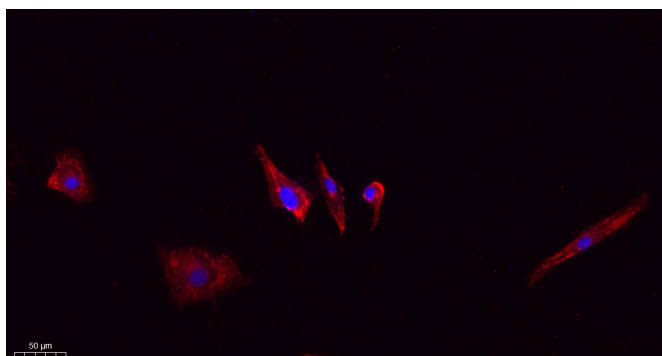
网址: www.njbybio.com

官方热线: 025-5229-8998

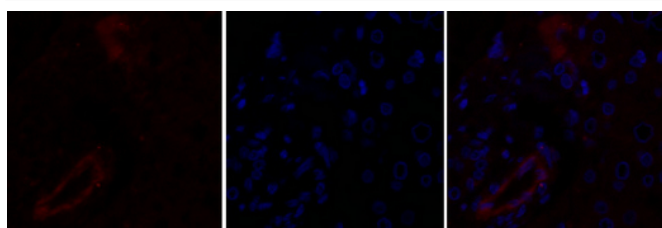
监督电话: 15950492658



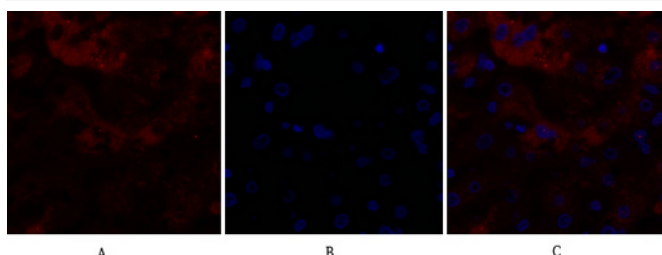
Products Images



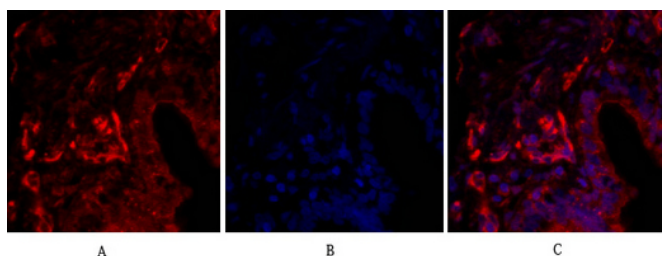
Immunofluorescence analysis of A549. 1, primary Antibody(red) was diluted at 1:200(4°C overnight). 2, Goat Anti Rabbit IgG (H&L) - Alexa Fluor 594 Secondary antibody was diluted at 1:1000(room temperature, 50min).3, Picture B: DAPI(blue) 10min.



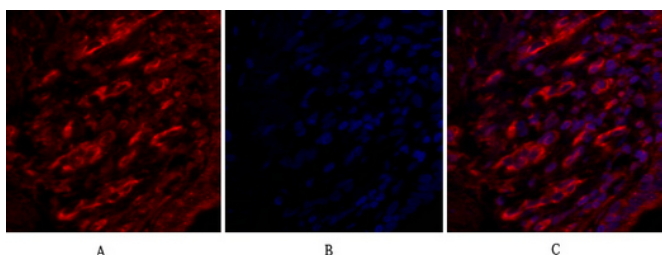
Immunofluorescence analysis of human-liver tissue. 1, Claudin-5 Polyclonal Antibody(red) was diluted at 1:200(4°C, overnight). 2, Cy3 labeled Secondary antibody was diluted at 1:300(room temperature, 50min).3, Picture B: DAPI(blue) 10min. Picture A: Target. Picture B: DAPI. Picture C: merge of A+B



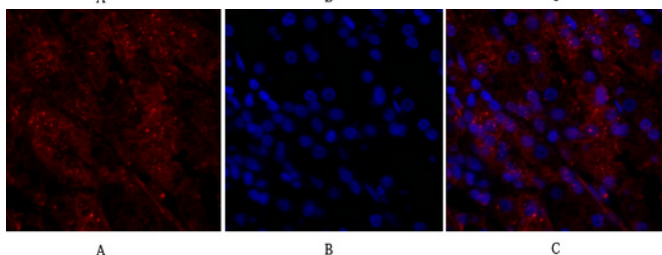
Immunofluorescence analysis of human-liver tissue. 1, Claudin-5 Polyclonal Antibody(red) was diluted at 1:200(4°C, overnight). 2, Cy3 labeled Secondary antibody was diluted at 1:300(room temperature, 50min).3, Picture B: DAPI(blue) 10min. Picture A: Target. Picture B: DAPI. Picture C: merge of A+B



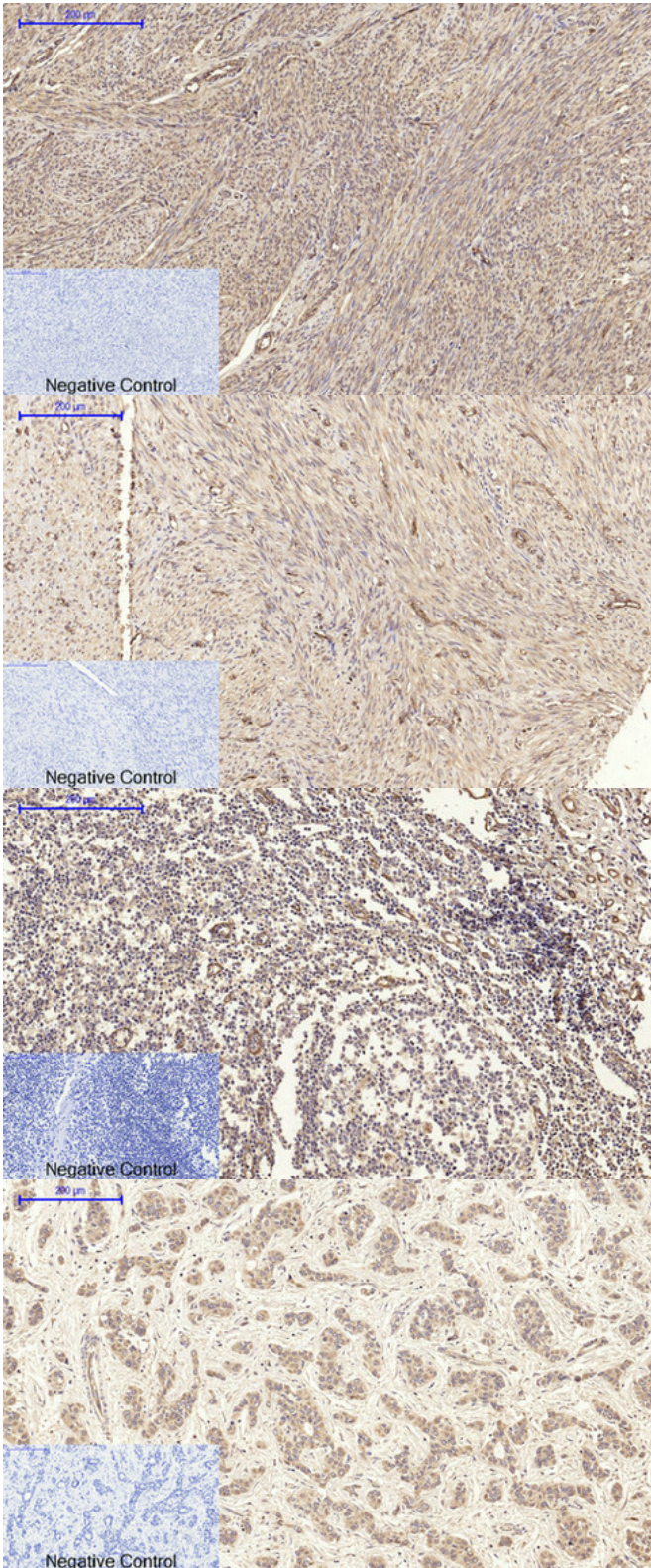
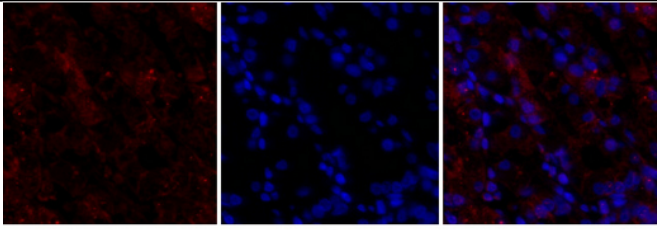
Immunofluorescence analysis of human-lung tissue. 1, Claudin-5 Polyclonal Antibody(red) was diluted at 1:200(4°C, overnight). 2, Cy3 labeled Secondary antibody was diluted at 1:300(room temperature, 50min).3, Picture B: DAPI(blue) 10min. Picture A: Target. Picture B: DAPI. Picture C: merge of A+B



Immunofluorescence analysis of human-lung tissue. 1, Claudin-5 Polyclonal Antibody(red) was diluted at 1:200(4°C, overnight). 2, Cy3 labeled Secondary antibody was diluted at 1:300(room temperature, 50min).3, Picture B: DAPI(blue) 10min. Picture A: Target. Picture B: DAPI. Picture C: merge of A+B



Nanjing BYabscience technology Co.,Ltd

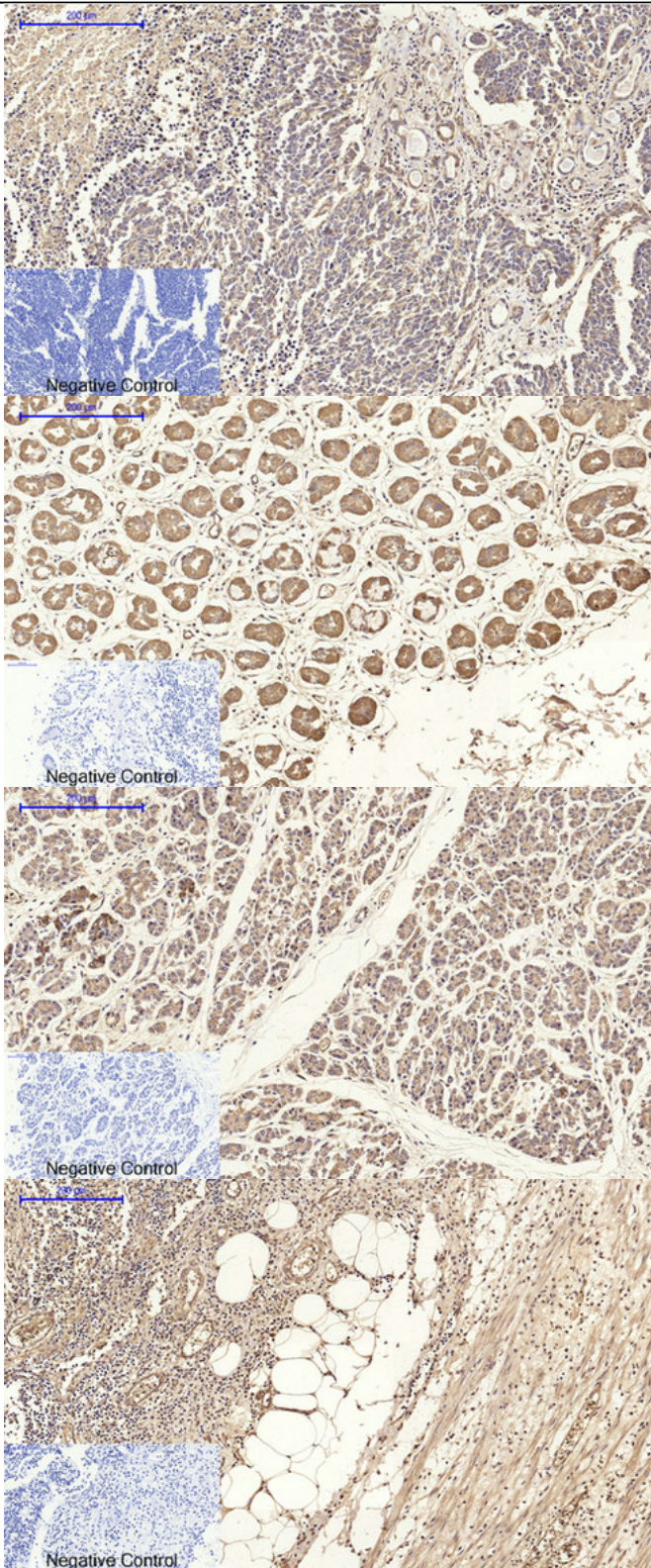


Nanjing BYabs science technology Co.,Ltd

网址: www.njbybio.com

官方热线: 025-5229-8998

监督电话: 15950492658

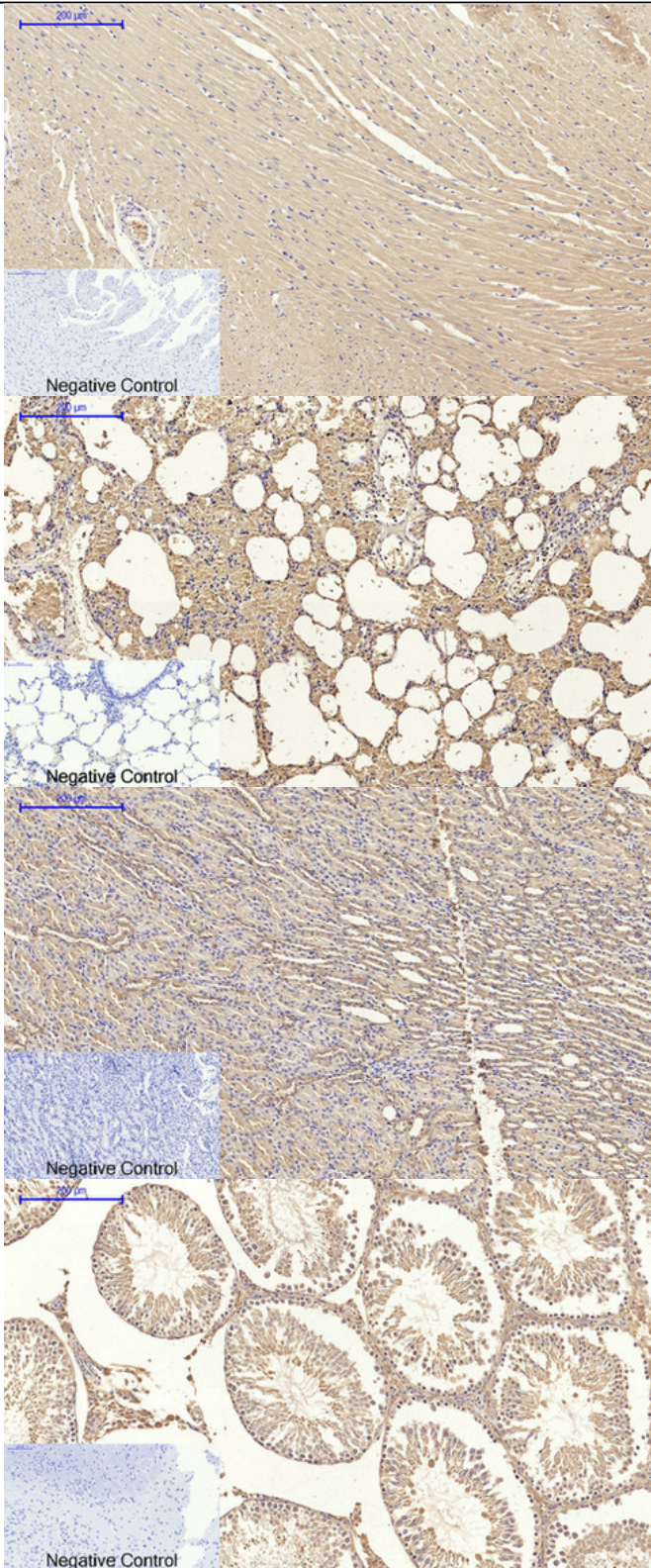


Nanjing BYabs science technology Co.,Ltd

网址: www.njbybio.com

官方热线: 025-5229-8998

监督电话: 15950492658

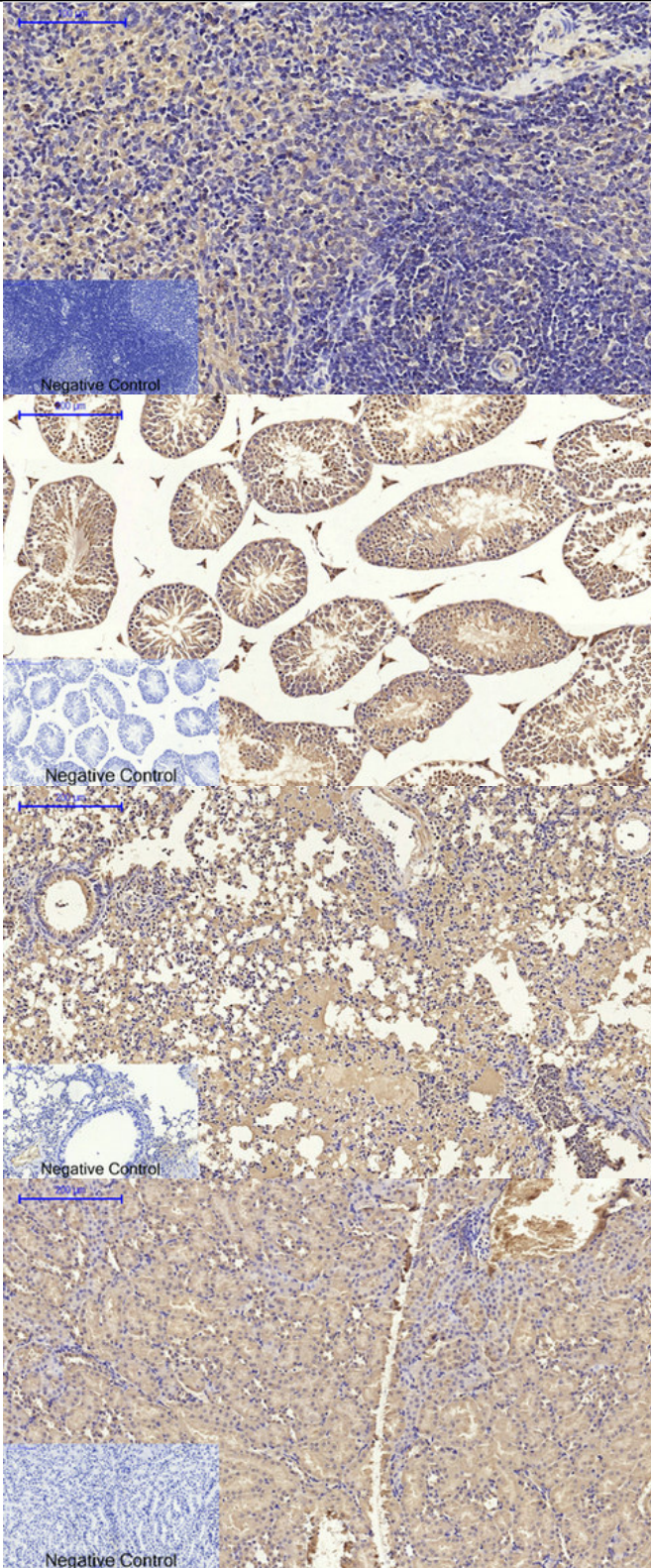


Nanjing BYabs science technology Co.,Ltd

网址: www.njbybio.com

官方热线: 025-5229-8998

监督电话: 15950492658



Nanjing BYabscience technology Co.,Ltd

网址: www.njbybio.com

官方热线: 025-5229-8998

监督电话: 15950492658

