



# CDHF10 Polyclonal Antibody

<b>Catalog No</b>	BYab-16946
<b>Isotype</b>	IgG
<b>Reactivity</b>	Human;Mouse;Rat
<b>Applications</b>	IHC;IF;ELISA
<b>Gene Name</b>	CELSR2
<b>Protein Name</b>	Cadherin EGF LAG seven-pass G-type receptor 2
<b>Immunogen</b>	The antiserum was produced against synthesized peptide derived from human CELSR2. AA range:2781-2830
<b>Specificity</b>	CDHF10 Polyclonal Antibody detects endogenous levels of CDHF10 protein.
<b>Formulation</b>	Liquid in PBS containing 50% glycerol, 0.5% BSA and 0.02% sodium azide.
<b>Source</b>	Polyclonal, Rabbit,IgG
<b>Purification</b>	The antibody was affinity-purified from rabbit antiserum by affinity-chromatography using epitope-specific immunogen.
<b>Dilution</b>	Immunohistochemistry: 1/100 - 1/300. Immunofluorescence: 1/200 - 1/1000. ELISA: 1/5000. Not yet tested in other applications.
<b>Concentration</b>	1 mg/ml
<b>Purity</b>	≥90%
<b>Storage Stability</b>	-20°C/1 year
<b>Synonyms</b>	CELSR2; CDHF10; EGFL2; KIAA0279; MEGF3; Cadherin EGF LAG seven-pass G-type receptor 2; Cadherin family member 10; Epidermal growth factor-like protein 2; EGF-like protein 2; Flamingo homolog 3; Multiple epidermal growth factor-like domains
<b>Observed Band</b>	
<b>Cell Pathway</b>	Cell membrane; Multi-pass membrane protein.
<b>Tissue Specificity</b>	Highest expression in brain and testis.
<b>Function</b>	function:Receptor that may have an important role in cell/cell signaling during nervous system formation.,PTM:The iron and 2-oxoglutarate dependent 3-hydroxylation of aspartate and asparagine is (R) stereospecific within EGF domains.,similarity:Belongs to the G-protein coupled receptor 2 family. LN-TM7 subfamily.,similarity:Contains 1 GPS domain.,similarity:Contains 1 laminin EGF-like domain.,similarity:Contains 2 laminin G-like domains.,similarity:Contains 7 EGF-like domains.,similarity:Contains 9 cadherin domains.,tissue

**Nanjing BYabscience technology Co.,Ltd**



specificity: Highest expression in brain and testis.,

## Background

The protein encoded by this gene is a member of the flamingo subfamily, part of the cadherin superfamily. The flamingo subfamily consists of nonclassic-type cadherins; a subpopulation that does not interact with catenins. The flamingo cadherins are located at the plasma membrane and have nine cadherin domains, seven epidermal growth factor-like repeats and two laminin A G-type repeats in their ectodomain. They also have seven transmembrane domains, a characteristic unique to this subfamily. It is postulated that these proteins are receptors involved in contact-mediated communication, with cadherin domains acting as homophilic binding regions and the EGF-like domains involved in cell adhesion and receptor-ligand interactions. The specific function of this particular member has not been determined. [provided by RefSeq, Jul 2008],

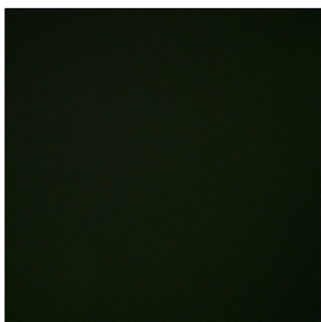
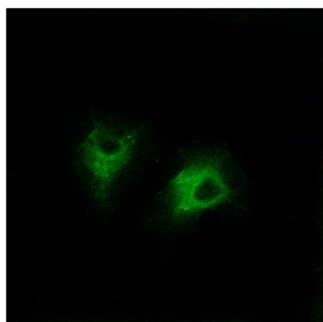
## matters needing attention

Avoid repeated freezing and thawing!

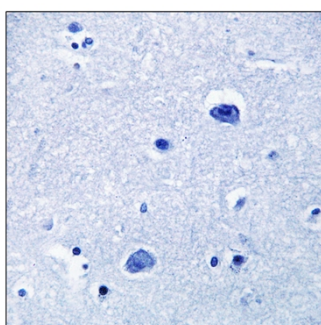
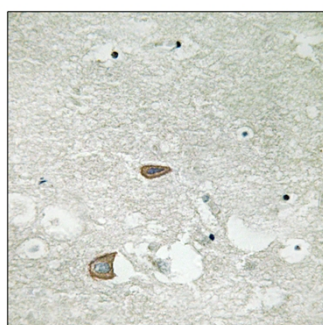
## Usage suggestions

This product can be used in immunological reaction related experiments. For more information, please consult technical personnel.

## Products Images



Immunofluorescence analysis of COS7 cells, using CELSR2 Antibody. The picture on the right is blocked with the synthesized peptide.



Immunohistochemistry analysis of paraffin-embedded human brain tissue, using CELSR2 Antibody. The picture on the right is blocked with the synthesized peptide.

**Nanjing BYabscience technology Co.,Ltd**

网址: [www.njbybio.com](http://www.njbybio.com)

官方热线: 025-5229-8998

监督电话: 15950492658