



Cadherin-9 Polyclonal Antibody

Catalog No	BYab-16937
Isotype	IgG
Reactivity	Human;Mouse
Applications	WB;IHC;IF;ELISA
Gene Name	CDH9
Protein Name	Cadherin-9
Immunogen	The antiserum was produced against synthesized peptide derived from human CDH9. AA range:201-250
Specificity	Cadherin-9 Polyclonal Antibody detects endogenous levels of Cadherin-9 protein.
Formulation	Liquid in PBS containing 50% glycerol, 0.5% BSA and 0.02% sodium azide.
Source	Polyclonal, Rabbit,IgG
Purification	The antibody was affinity-purified from rabbit antiserum by affinity-chromatography using epitope-specific immunogen.
Dilution	Western Blot: 1/500 - 1/2000. Immunohistochemistry: 1/100 - 1/300. Immunofluorescence: 1/200 - 1/1000. ELISA: 1/5000. Not yet tested in other applications.
Concentration	1 mg/ml
Purity	≥90%
Storage Stability	-20°C/1 year
Synonyms	CDH9; Cadherin-9
Observed Band	89kD
Cell Pathway	Cell membrane ; Single-pass type I membrane protein .
Tissue Specificity	PCR rescued clones,
Function	function:Cadherins are calcium dependent cell adhesion proteins. They preferentially interact with themselves in a homophilic manner in connecting cells; cadherins may thus contribute to the sorting of heterogeneous cell types.,similarity:Contains 5 cadherin domains.,
Background	This gene encodes a type II classical cadherin from the cadherin superfamily, integral membrane proteins that mediate calcium-dependent cell-cell adhesion. Mature cadherin proteins are composed of a large N-terminal extracellular domain, a single membrane-spanning domain, and a small, highly conserved C-terminal cytoplasmic domain. The extracellular domain consists of 5

Nanjing BYabscience technology Co.,Ltd



subdomains, each containing a cadherin motif, and appears to determine the specificity of the protein's homophilic cell adhesion activity. Type II (atypical) cadherins are defined based on their lack of a HAV cell adhesion recognition sequence specific to type I cadherins. [provided by RefSeq, Jul 2008],

matters needing attention

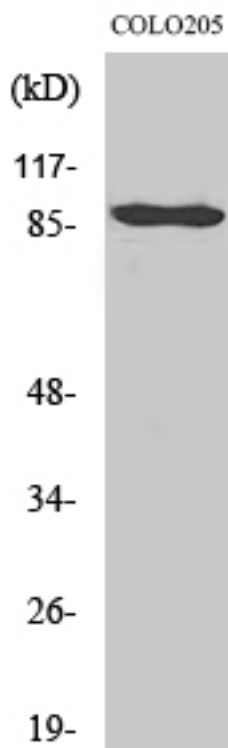
Avoid repeated freezing and thawing!

Usage suggestions

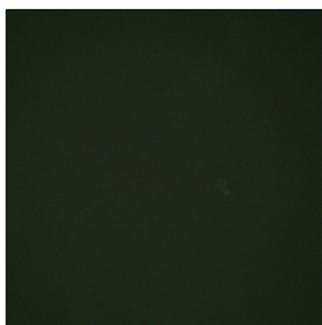
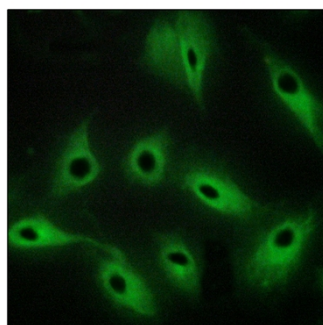
This product can be used in immunological reaction related experiments. For more information, please consult technical personnel.



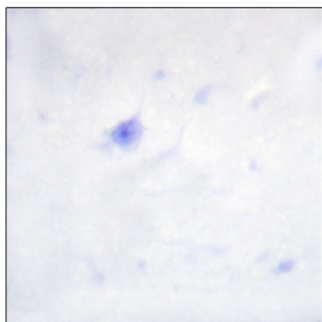
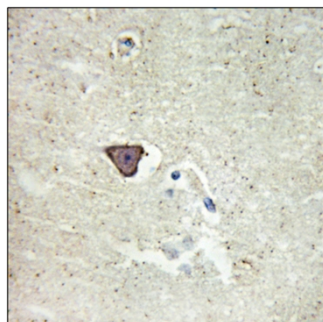
Products Images



Western Blot analysis of various cells using Cadherin-9 Polyclonal Antibody



Immunofluorescence analysis of HeLa cells, using CDH9 Antibody. The picture on the right is blocked with the synthesized peptide.



Immunohistochemistry analysis of paraffin-embedded human brain tissue, using CDH9 Antibody. The picture on the right is blocked with the synthesized peptide.

