



# NVL Polyclonal Antibody

Catalog No	BYab-16784
Isotype	IgG
Reactivity	Human;Mouse;Rat
Applications	WB;ELISA
Gene Name	NVL
Protein Name	Nuclear valosin-containing protein-like
Immunogen	Synthesized peptide derived from NVL . at AA range: 320-400
Specificity	NVL Polyclonal Antibody detects endogenous levels of NVL protein.
Formulation	Liquid in PBS containing 50% glycerol, 0.5% BSA and 0.02% sodium azide.
Source	Polyclonal, Rabbit,IgG
Purification	The antibody was affinity-purified from rabbit antiserum by affinity-chromatography using epitope-specific immunogen.
Dilution	Western Blot: 1/500 - 1/2000. ELISA: 1/20000. Not yet tested in other applications.
Concentration	1 mg/ml
Purity	≥90%
Storage Stability	-20°C/1 year
Synonyms	NVL; Nuclear valosin-containing protein-like; NVLp; Nuclear VCP-like protein
Observed Band	95kD
Cell Pathway	[Isoform 2]: Nucleus, nucleoplasm .; [Isoform 1]: Nucleus, nucleolus . Nucleus, nucleoplasm . Expressed predominantly in the nucleolus. Associates with pre-ribosomal particles in the nucleus. .
Tissue Specificity	Widely expressed. Highest level of expression in heart, placenta, skeletal muscle, pancreas and retina.
Function	PTM:Phosphorylated.,similarity:Belongs to the AAA ATPase family.,tissue specificity:Widely expressed. Highest level of expression in heart, placenta, skeletal muscle, pancreas and retina.,
Background	This gene encodes a member of the AAA (ATPases associated with diverse cellular activities) superfamily. Multiple transcript variants encoding different isoforms have been found for this gene. Two encoded proteins, described as major and minor isoforms, have been localized to distinct regions of the nucleus. The largest encoded protein (major isoform) has been localized to the nucleolus and shown to participate in ribosome biosynthesis (PMID: 15469983, 16782053), while the minor isoform has been localized to the nucleoplasm. [provided by

Nanjing BYabscience technology Co.,Ltd



RefSeq, Aug 2011],

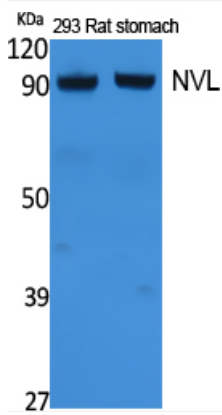
**matters needing attention**

Avoid repeated freezing and thawing!

**Usage suggestions**

This product can be used in immunological reaction related experiments. For more information, please consult technical personnel.

## Products Images



Western Blot analysis of extracts from rat stomach, 293 cells, using NVL Polyclonal Antibody. Secondary antibody(catalog#:RS0002) was diluted at 1:20000 cells nucleus extracted by Minute TM Cytoplasmic and Nuclear Fractionation kit (SC-003, Invent biotech, MN, USA).

Nanjing BYabs science technology Co.,Ltd

网址: [www.njbybio.com](http://www.njbybio.com)

官方热线: 025-5229-8998

监督电话: 15950492658