



Skp1 p19 Polyclonal Antibody

Catalog No	BYab-16778
Isotype	IgG
Reactivity	Human;Mouse;Rat;Monkey
Applications	WB;IHC;IF;ELISA
Gene Name	SKP1
Protein Name	S-phase kinase-associated protein 1
Immunogen	The antiserum was produced against synthesized peptide derived from human SKP1A/p19. AA range:41-90
Specificity	Skp1 p19 Polyclonal Antibody detects endogenous levels of Skp1 p19 protein.
Formulation	Liquid in PBS containing 50% glycerol, 0.5% BSA and 0.02% sodium azide.
Source	Polyclonal, Rabbit,IgG
Purification	The antibody was affinity-purified from rabbit antiserum by affinity-chromatography using epitope-specific immunogen.
Dilution	WB: 1/500 - 1/2000. IHC: 1/100 - 1/300. ELISA: 1/5000.. IF 1:50-200
Concentration	1 mg/ml
Purity	≥90%
Storage Stability	-20°C/1 year
Synonyms	SKP1; EMC19; OCP2; SKP1A; TCEB1L; S-phase kinase-associated protein 1; Cyclin-A/CDK2-associated protein p19; Organ of Corti protein 2; OCP-2; Organ of Corti protein II; OCP-II; RNA polymerase II elongation factor-like protein; SIII; Transcr
Observed Band	19kD
Cell Pathway	nucleus,nucleoplasm,cytoplasm,centrosome,cytosol,SCF ubiquitin ligase complex,Cul7-RING ubiquitin ligase complex,PcG protein complex,extracellular exosome,
Tissue Specificity	Erythrocyte,Inner ear,Lung,Skin,Uterus,
Function	function:Essential component of the SCF (SKP1-CUL1-F-box protein) ubiquitin ligase complex, which mediates the ubiquitination of proteins involved in cell cycle progression, signal transduction and transcription. In the SCF complex, serves as an adapter that links the F-box protein to CUL1.,pathway:Protein modification; protein ubiquitination.,similarity:Belongs to the SKP1 family.,subunit:Interacts directly with CUL1 and F-box proteins, such as BTRC and SKP2, in the SCF

Nanjing BYabscience technology Co.,Ltd



complex. Interacts with the cyclin A/CDK2 complex. Part of a SCF-like complex consisting of CUL7, RBX1, SKP1 and FBXW8. Component of a E3 ubiquitin ligase complex containing UBE2D1, SIAH1, CACYBP/SIP, SKP1, APC and TBL1X.,

Background

This gene encodes a component of SCF complexes, which are composed of this protein, cullin 1, a ring-box protein, and one member of the F-box family of proteins. This protein binds directly to the F-box motif found in F-box proteins. SCF complexes are involved in the regulated ubiquitination of specific protein substrates, which targets them for degradation by the proteasome. Specific F-box proteins recognize different target protein(s), and many specific SCF substrates have been identified including regulators of cell cycle progression and development. Studies have also characterized the protein as an RNA polymerase II elongation factor. Alternative splicing of this gene results in two transcript variants. A related pseudogene has been identified on chromosome 7. [provided by RefSeq, Jul 2008],

matters needing attention

Avoid repeated freezing and thawing!

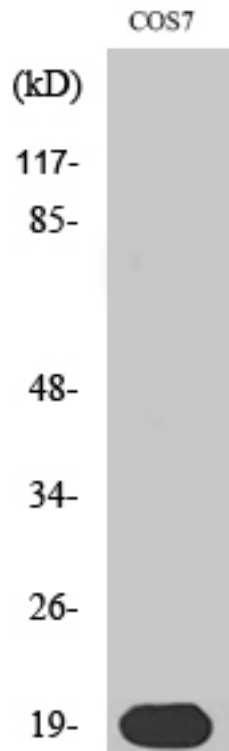
Usage suggestions

This product can be used in immunological reaction related experiments. For more information, please consult technical personnel.

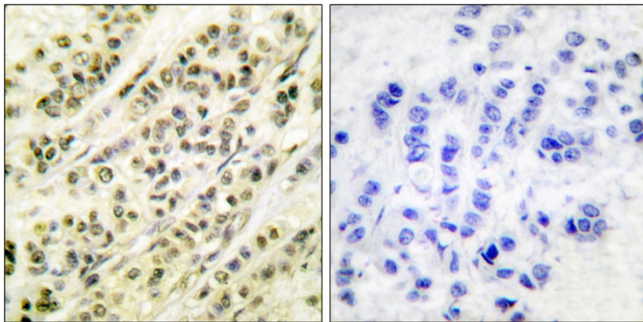
Nanjing BYabscience technology Co.,Ltd



Products Images



Western Blot analysis of various cells using Skp1 p19 Polyclonal Antibody



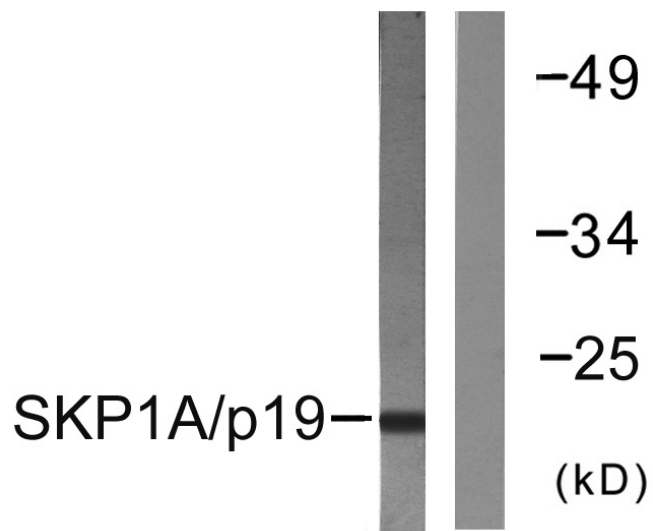
Immunohistochemistry analysis of paraffin-embedded human breast carcinoma tissue, using SKP1A/p19 Antibody. The picture on the right is blocked with the synthesized peptide.

Nanjing BYabs science technology Co.,Ltd

网址: www.njbybio.com

官方热线: 025-5229-8998

监督电话: 15950492658



Western blot analysis of lysates from COS7 cells, using SKP1A/p19 Antibody. The lane on the right is blocked with the synthesized peptide.