



POT1 Polyclonal Antibody

Catalog No	BYab-16769
Isotype	IgG
Reactivity	Human;Monkey
Applications	WB;IHC
Gene Name	POT1
Protein Name	Protection of telomeres protein 1
Immunogen	The antiserum was produced against synthesized peptide derived from human POT1. AA range:247-296
Specificity	POT1 Polyclonal Antibody detects endogenous levels of POT1 protein.
Formulation	Liquid in PBS containing 50% glycerol, 0.5% BSA and 0.02% sodium azide.
Source	Polyclonal, Rabbit,IgG
Purification	The antibody was affinity-purified from rabbit antiserum by affinity-chromatography using epitope-specific immunogen.
Dilution	WB 1:500-2000;IHC-p 1:50-300
Concentration	1 mg/ml
Purity	≥90%
Storage Stability	-20°C/1 year
Synonyms	POT1; Protection of telomeres protein 1; hPot1; POT1-like telomere end-binding protein
Observed Band	70kD
Cell Pathway	Nucleus . Chromosome, telomere . Colocalizes with telomeric DNA.
Tissue Specificity	Ubiquitous.
Function	alternative products:A number of isoforms are produced,function:Component of the telomerase ribonucleoprotein (RNP) complex that is essential for the replication of chromosome termini. Is a component of the double-stranded telomeric DNA-binding TRF1 complex which is involved in the regulation of telomere length by cis-inhibition of telomerase. Also acts as a single-stranded telomeric DNA-binding protein and thus may act as a downstream effector of the TRF1 complex and may transduce information about telomere maintenance and/or length to the telomere terminus. Component of the shelterin complex (telosome) that is involved in the regulation of telomere length and protection. Shelterin associates with arrays of double-stranded TTAGGG repeats added by

Nanjing BYabscience technology Co.,Ltd



telomerase and protects chromosome ends; without its protective activity, telomeres are no longer hidden from the DNA damage surveillance and

Background

protection of telomeres 1(POT1) Homo sapiens This gene is a member of the telombin family and encodes a nuclear protein involved in telomere maintenance. Specifically, this protein functions as a member of a multi-protein complex that binds to the TTAGGG repeats of telomeres, regulating telomere length and protecting chromosome ends from illegitimate recombination, catastrophic chromosome instability, and abnormal chromosome segregation. Increased transcriptional expression of this gene is associated with stomach carcinogenesis and its progression. Alternatively spliced transcript variants have been described. [provided by RefSeq, Jul 2008],

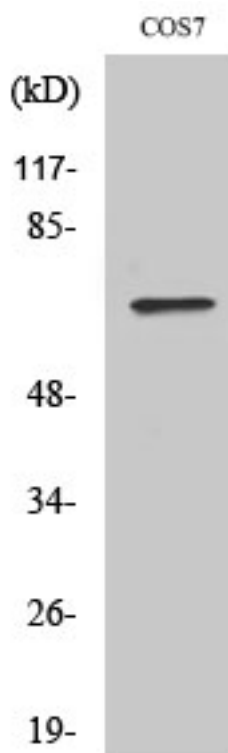
matters needing attention

Avoid repeated freezing and thawing!

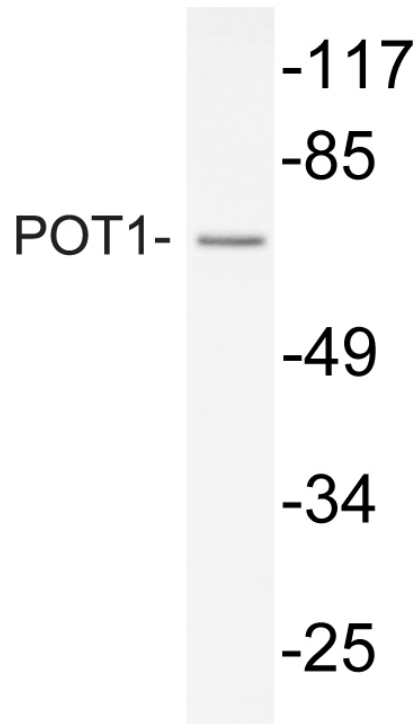
Usage suggestions

This product can be used in immunological reaction related experiments. For more information, please consult technical personnel.

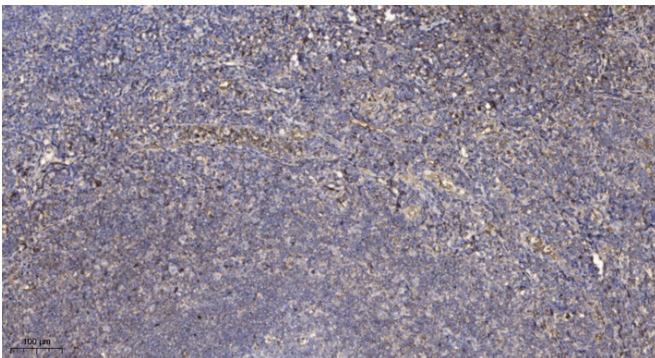
Products Images



Western Blot analysis of various cells using POT1 Polyclonal Antibody cells nucleus extracted by Minute TM Cytoplasmic and Nuclear Fractionation kit (SC-003, Inventbiotech, MN, USA).



Western blot analysis of lysate from COS7 cells, using POT1 antibody.



Immunohistochemical analysis of paraffin-embedded human tonsil. 1, Antibody was diluted at 1:200(4° overnight). 2, Tris-EDTA,pH9.0 was used for antigen retrieval. 3,Secondary antibody was diluted at 1:200(room temperature, 45min).