



Cyclin E2 Polyclonal Antibody

Catalog No	BYab-16729
Isotype	IgG
Reactivity	Human;Mouse
Applications	WB;IHC;IF;ELISA
Gene Name	CCNE2
Protein Name	G1/S-specific cyclin-E2
Immunogen	The antiserum was produced against synthesized peptide derived from human Cyclin E2. AA range:355-404
Specificity	Cyclin E2 Polyclonal Antibody detects endogenous levels of Cyclin E2 protein.
Formulation	Liquid in PBS containing 50% glycerol, 0.5% BSA and 0.02% sodium azide.
Source	Polyclonal, Rabbit,IgG
Purification	The antibody was affinity-purified from rabbit antiserum by affinity-chromatography using epitope-specific immunogen.
Dilution	Western Blot: 1/500 - 1/2000. Immunohistochemistry: 1/100 - 1/300. Immunofluorescence: 1/200 - 1/1000. ELISA: 1/5000. Not yet tested in other applications.
Concentration	1 mg/ml
Purity	≥90%
Storage Stability	-20°C/1 year
Synonyms	CCNE2; G1/S-specific cyclin-E2
Observed Band	46kD
Cell Pathway	Nucleus .
Tissue Specificity	According to PubMed:9858585, highest levels of expression in adult testis, thymus and brain. Lower levels in placenta, spleen and colon. Consistently elevated levels in tumor-derived cells compared to non-transformed proliferating cells. According to PubMed:9840927: low levels in thymus, prostate, brain, skeletal muscle, and kidney. Elevated levels in lung. According to PubMed:9840943 highly expressed in testis, placenta, thymus and brain. In a lesser extent in small intestine and colon.
Function	function:Essential for the control of the cell cycle at the late G1 and early S phase.,induction:Activated by papilloma viral oncoproteins E6 and E7 which bind to and inactivate p53 and Rb, respectively.,PTM:Phosphorylation by CDK2 triggers its release from CDK2 and degradation via the ubiquitin proteasome pathway.,similarity:Belongs to the cyclin family.,similarity:Belongs to the cyclin

Nanjing BYabscience technology Co.,Ltd



family. Cyclin E subfamily.,subunit:Interacts with the CDK2 (in vivo) and CDK3 (in vitro) protein kinases to form a serine/threonine kinase holoenzyme complex. The cyclin subunit imparts substrate specificity to the complex.,tissue specificity:According to PubMed:9858585: highest levels in adult testis, thymus and brain. Lower levels in placenta, spleen and colon. Consistently elevated levels in tumor-derived cells compared to non-transformed proliferating cells. According to PubMed:9840927: low levels i

Background

The protein encoded by this gene belongs to the highly conserved cyclin family, whose members are characterized by a dramatic periodicity in protein abundance through the cell cycle. Cyclins function as regulators of CDK kinases. Different cyclins exhibit distinct expression and degradation patterns which contribute to the temporal coordination of each mitotic event. This cyclin forms a complex with and functions as a regulatory subunit of CDK2. This cyclin has been shown to specifically interact with CIP/KIP family of CDK inhibitors, and plays a role in cell cycle G1/S transition. The expression of this gene peaks at the G1-S phase and exhibits a pattern of tissue specificity distinct from that of cyclin E1. A significantly increased expression level of this gene was observed in tumor-derived cells. [provided by RefSeq, Jul 2008],

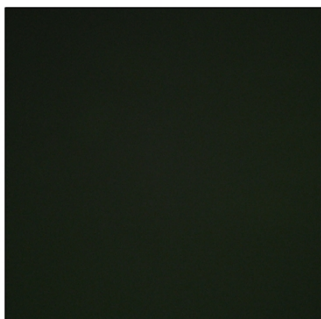
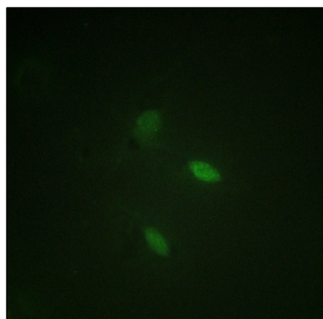
matters needing attention

Avoid repeated freezing and thawing!

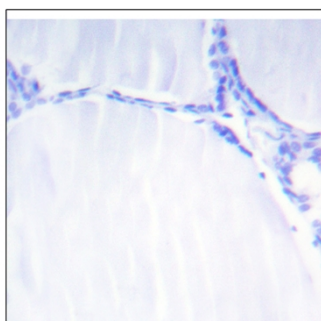
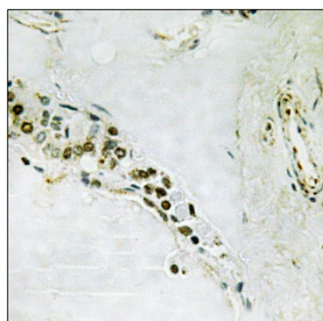
Usage suggestions

This product can be used in immunological reaction related experiments. For more information, please consult technical personnel.

Products Images



Immunofluorescence analysis of NIH/3T3 cells, using Cyclin E2 Antibody. The picture on the right is blocked with the synthesized peptide.



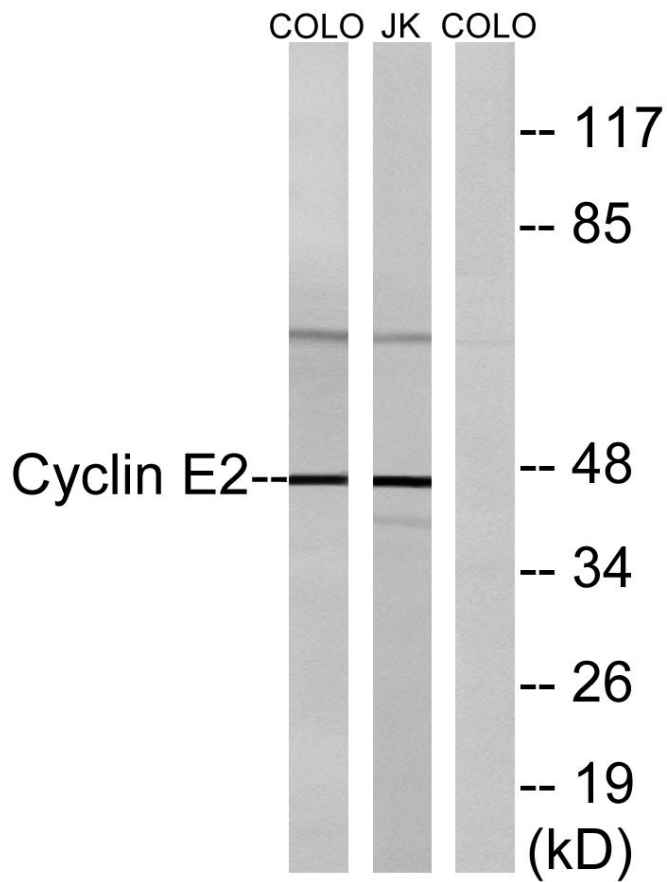
Immunohistochemistry analysis of paraffin-embedded human thyroid gland tissue, using Cyclin E2 Antibody. The picture on the right is blocked with the synthesized peptide.

Nanjing BYabscience technology Co.,Ltd

网址: www.njbybio.com

官方热线: 025-5229-8998

监督电话: 15950492658



Western blot analysis of lysates from COLO and Jurkat cells, using Cyclin E2 Antibody. The lane on the right is blocked with the synthesized peptide.