



Bub3 Polyclonal Antibody

Catalog No	BYab-16669
Isotype	IgG
Reactivity	Human;Mouse;Rat
Applications	WB;IHC;IF;ELISA
Gene Name	BUB3
Protein Name	Mitotic checkpoint protein BUB3
Immunogen	The antiserum was produced against synthesized peptide derived from human BUB3. AA range:279-328
Specificity	Bub3 Polyclonal Antibody detects endogenous levels of Bub3 protein.
Formulation	Liquid in PBS containing 50% glycerol, 0.5% BSA and 0.02% sodium azide.
Source	Polyclonal, Rabbit,IgG
Purification	The antibody was affinity-purified from rabbit antiserum by affinity-chromatography using epitope-specific immunogen.
Dilution	Western Blot: 1/500 - 1/2000. Immunohistochemistry: 1/100 - 1/300. Immunofluorescence: 1/200 - 1/1000. ELISA: 1/5000. Not yet tested in other applications.
Concentration	1 mg/ml
Purity	≥90%
Storage Stability	-20°C/1 year
Synonyms	BUB3; Mitotic checkpoint protein BUB3
Observed Band	40kD
Cell Pathway	Nucleus. Chromosome, centromere, kinetochore . Starts to localize at kinetochores in prometaphase I (Pro-MI) stage and maintains the localization until the metaphase I-anaphase I (MI-AI) transition. .
Tissue Specificity	Brain,Epithelium,Placenta,Spleen,Testis,
Function	function:Required for kinetochore localization of BUB1.,similarity:Belongs to the WD repeat BUB3 family.,similarity:Contains 5 WD repeats.,subunit:Interacts with BUB1 and BUBR1.,
Background	This gene encodes a protein involved in spindle checkpoint function. The encoded protein contains four WD repeat domains and has sequence similarity with the yeast BUB3 protein. Alternate transcriptional splice variants, encoding different isoforms, have been characterized. [provided by RefSeq, Jul 2008],

Nanjing BYabscience technology Co.,Ltd



matters needing attention

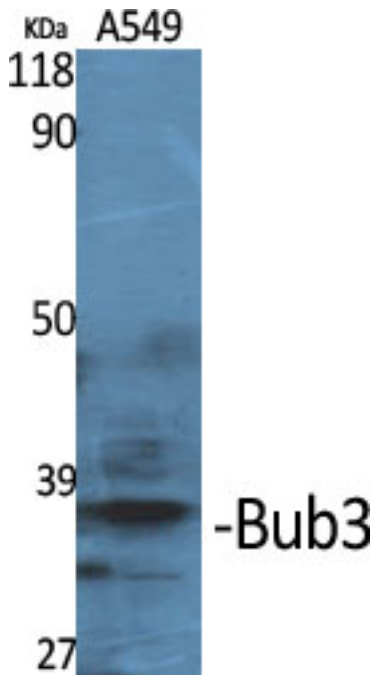
Avoid repeated freezing and thawing!

Usage suggestions

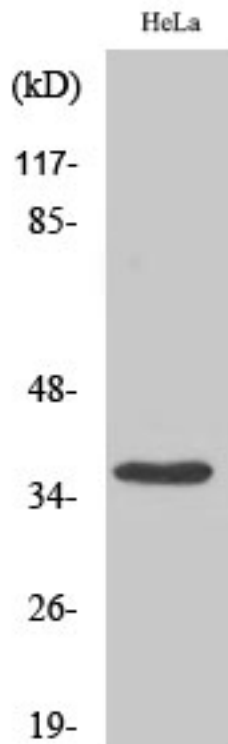
This product can be used in immunological reaction related experiments. For more information, please consult technical personnel.



Products Images



Western Blot analysis of various cells using Bub3 Polyclonal Antibody



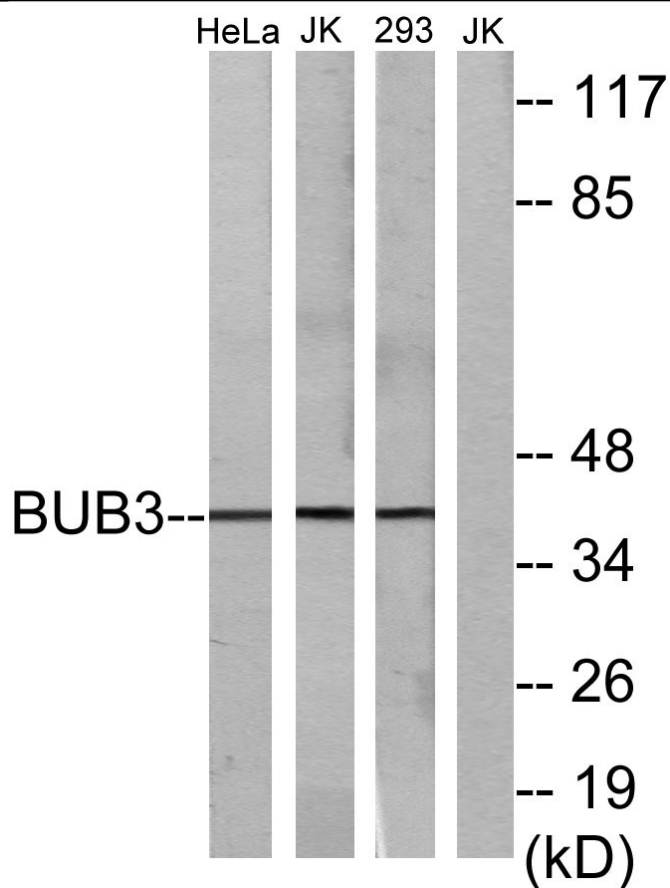
Western Blot analysis of 293 cells using Bub3 Polyclonal Antibody

Nanjing BYabs science technology Co.,Ltd

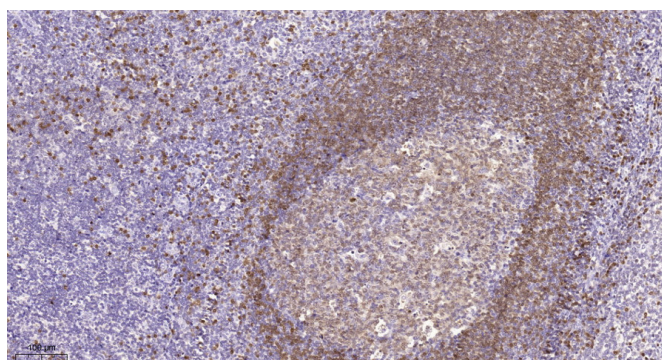
网址: www.njbybio.com

官方热线: 025-5229-8998

监督电话: 15950492658



Western blot analysis of lysates from HeLa cells, Jurkat cells, and 293 cells, using BUB3 Antibody. The lane on the right is blocked with the synthesized peptide.



Immunohistochemical analysis of paraffin-embedded human tonsil. 1, Tris-EDTA, pH 9.0 was used for antigen retrieval. 2 Antibody was diluted at 1:200 (4° overnight). 3, Secondary antibody was diluted at 1:200 (room temperature, 45 min).