



Cyclin D3 (phospho Thr283) Polyclonal Antibody

| | |
|---------------------------|--|
| Catalog No | BYab-16594 |
| Isotype | IgG |
| Reactivity | Human;Mouse;Rat |
| Applications | WB;IHC;IF;ELISA |
| Gene Name | CCND3 |
| Protein Name | G1/S-specific cyclin-D3 |
| Immunogen | The antiserum was produced against synthesized peptide derived from human Cyclin D3 around the phosphorylation site of Thr283. AA range:243-292 |
| Specificity | Phospho-Cyclin D3 (T283) Polyclonal Antibody detects endogenous levels of Cyclin D3 protein only when phosphorylated at T283. |
| Formulation | Liquid in PBS containing 50% glycerol, 0.5% BSA and 0.02% sodium azide. |
| Source | Polyclonal, Rabbit,IgG |
| Purification | The antibody was affinity-purified from rabbit antiserum by affinity-chromatography using epitope-specific immunogen. |
| Dilution | WB: 1/500 - 1/2000. IHC: 1/100 - 1/300. ELISA: 1/5000.. IF 1:50-200 |
| Concentration | 1 mg/ml |
| Purity | ≥90% |
| Storage Stability | -20°C/1 year |
| Synonyms | CCND3; G1/S-specific cyclin-D3 |
| Observed Band | 32kD |
| Cell Pathway | Nucleus . Cytoplasm . |
| Tissue Specificity | Brain,Lung,Placenta,Synovial membrane tissue,Umbilical cord blood, |
| Function | function:Essential for the control of the cell cycle at the G1/S (start) transition. Potentiates the transcriptional activity of ATF5.,similarity:Belongs to the cyclin family.,similarity:Belongs to the cyclin family. Cyclin D subfamily.,subunit:Interacts with the CDK4 and CDK6 protein kinases to form a serine/threonine kinase holoenzyme complex. The cyclin subunit imparts substrate specificity to the complex. Interacts with ATF5. Interacts with EIF3K., |
| Background | The protein encoded by this gene belongs to the highly conserved cyclin family, whose members are characterized by a dramatic periodicity in protein abundance through the cell cycle. Cyclins function as regulators of CDK kinases. Different cyclins exhibit distinct expression and degradation patterns which contribute to the |

Nanjing BYabscience technology Co.,Ltd



temporal coordination of each mitotic event. This cyclin forms a complex with and functions as a regulatory subunit of CDK4 or CDK6, whose activity is required for cell cycle G1/S transition. This protein has been shown to interact with and be involved in the phosphorylation of tumor suppressor protein Rb. The CDK4 activity associated with this cyclin was reported to be necessary for cell cycle progression through G2 phase into mitosis after UV radiation. Several transcript variants encoding different isoforms have been found for this gene. [provided by RefSeq, Oct 2008],

matters needing attention

Avoid repeated freezing and thawing!

Usage suggestions

This product can be used in immunological reaction related experiments. For more information, please consult technical personnel.

Nanjing BYabscience technology Co.,Ltd

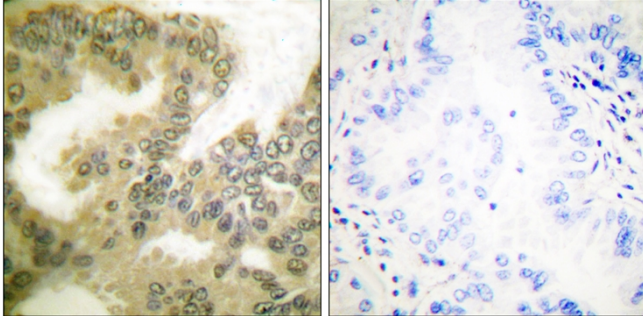
网址: www.njbybio.com

官方热线: 025-5229-8998

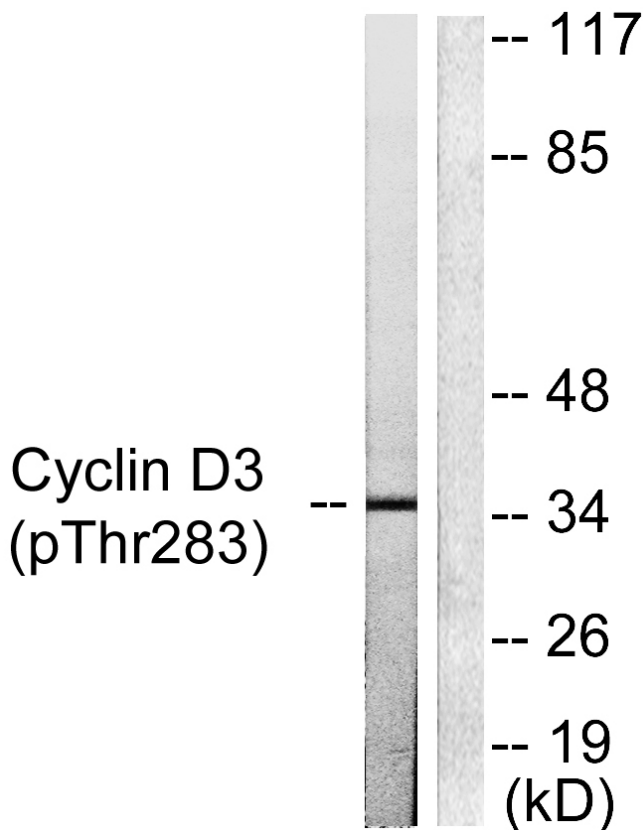
监督电话: 15950492658



Products Images



Immunohistochemistry analysis of paraffin-embedded human lung carcinoma, using Cyclin D3 (Phospho-Thr283) Antibody. The picture on the right is blocked with the phospho peptide.



Western blot analysis of lysates from K562 cells treated with UV 5', using Cyclin D3 (Phospho-Thr283) Antibody. The lane on the right is blocked with the phospho peptide.