



NCX1 Polyclonal Antibody

Catalog No	BYab-16522
Isotype	IgG
Reactivity	Human;Mouse;Rat
Applications	WB;ELISA
Gene Name	SLC8A1
Protein Name	Sodium/calcium exchanger 1
Immunogen	Synthesized peptide derived from NCX1 . at AA range: 270-350
Specificity	NCX1 Polyclonal Antibody detects endogenous levels of NCX1 protein.
Formulation	Liquid in PBS containing 50% glycerol, 0.5% BSA and 0.02% sodium azide.
Source	Polyclonal, Rabbit,IgG
Purification	The antibody was affinity-purified from rabbit antiserum by affinity-chromatography using epitope-specific immunogen.
Dilution	Western Blot: 1/500 - 1/2000. ELISA: 1/5000. Not yet tested in other applications.
Concentration	1 mg/ml
Purity	≥90%
Storage Stability	-20°C/1 year
Synonyms	SLC8A1; CNC; NCX1; Sodium/calcium exchanger 1; Na(+)/Ca(2+)-exchange protein 1
Observed Band	108kD
Cell Pathway	Cell membrane ; Multi-pass membrane protein .
Tissue Specificity	Detected primarily in heart and at lower levels in brain (PubMed:1374913). Expressed in cardiac sarcolemma, brain, kidney, liver, pancreas, skeletal muscle, placenta and lung (PubMed:1476165).
Function	alternative products:Additional isoforms seem to exist,enzyme regulation:By ATP.,function:Rapidly transports Ca(2+) during excitation-contraction coupling. Ca(2+) is extruded from the cell during relaxation so as to prevent overloading of intracellular stores.,similarity:Belongs to the sodium/potassium/calcium exchanger family. SLC8 subfamily.,similarity:Contains 2 Calx-beta domains.,tissue specificity:Cardiac sarcolemma.,
Background	In cardiac myocytes, Ca(2+) concentrations alternate between high levels during contraction and low levels during relaxation. The increase in Ca(2+) concentration during contraction is primarily due to release of Ca(2+) from intracellular stores.

Nanjing BYabscience technology Co.,Ltd



However, some Ca^{2+} also enters the cell through the sarcolemma (plasma membrane). During relaxation, Ca^{2+} is sequestered within the intracellular stores. To prevent overloading of intracellular stores, the Ca^{2+} that entered across the sarcolemma must be extruded from the cell. The Na^{+} - Ca^{2+} exchanger is the primary mechanism by which the Ca^{2+} is extruded from the cell during relaxation. In the heart, the exchanger may play a key role in digitalis action. The exchanger is the dominant mechanism in returning the cardiac myocyte to its resting state following excitation.[supplied by OMIM, Apr 2004],

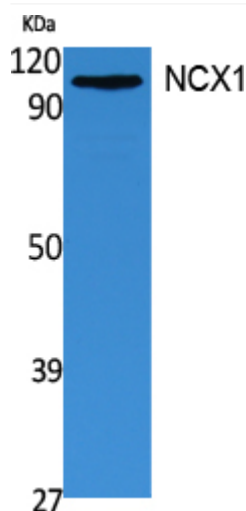
matters needing attention

Avoid repeated freezing and thawing!

Usage suggestions

This product can be used in immunological reaction related experiments. For more information, please consult technical personnel.

Products Images



Western Blot analysis of extracts from 293 cells, using NCX1 Polyclonal Antibody. Secondary antibody(catalog#:RS0002) was diluted at 1:20000