



# L-type Ca<sup>++</sup> CP γ7 Polyclonal Antibody

<b>Catalog No</b>	BYab-16462
<b>Isotype</b>	IgG
<b>Reactivity</b>	Human;Mouse;Rat
<b>Applications</b>	WB;ELISA
<b>Gene Name</b>	CACNG7
<b>Protein Name</b>	Voltage-dependent calcium channel gamma-7 subunit
<b>Immunogen</b>	The antiserum was produced against synthesized peptide derived from human CACNG7. AA range:198-247
<b>Specificity</b>	L-type Ca <sup>++</sup> CP γ7 Polyclonal Antibody detects endogenous levels of L-type Ca <sup>++</sup> CP γ7 protein.
<b>Formulation</b>	Liquid in PBS containing 50% glycerol, 0.5% BSA and 0.02% sodium azide.
<b>Source</b>	Polyclonal, Rabbit,IgG
<b>Purification</b>	The antibody was affinity-purified from rabbit antiserum by affinity-chromatography using epitope-specific immunogen.
<b>Dilution</b>	Western Blot: 1/500 - 1/2000. ELISA: 1/20000. Not yet tested in other applications.
<b>Concentration</b>	1 mg/ml
<b>Purity</b>	≥90%
<b>Storage Stability</b>	-20°C/1 year
<b>Synonyms</b>	CACNG7; Voltage-dependent calcium channel gamma-7 subunit; Neuronal voltage-gated calcium channel gamma-7 subunit; Transmembrane AMPAR regulatory protein gamma-7; TARP gamma-7
<b>Observed Band</b>	40kD
<b>Cell Pathway</b>	Cell membrane ; Multi-pass membrane protein .
<b>Tissue Specificity</b>	Detected in heart left ventricle (PubMed:21127204). Widely expressed.
<b>Function</b>	function:Thought to stabilize the calcium channel in an inactivated (closed) state.,similarity:Belongs to the PMP-22/EMP/MP20 family. CACNG subfamily.,subunit:The L-type calcium channel is composed of five subunits: alpha-1, alpha-2/delta, beta and gamma.,tissue specificity:Widely expressed.,
<b>Background</b>	calcium voltage-gated channel auxiliary subunit gamma 7(CACNG7) Homo sapiens The protein encoded by this gene is a type II transmembrane AMPA receptor regulatory protein (TARP). TARPs regulate both trafficking and channel gating of the AMPA receptors. This gene is part of a functionally diverse

**Nanjing BYabscience technology Co.,Ltd**



eight-member protein subfamily of the PMP-22/EMP/MP20 family and is located in a cluster with two family members, a type I TARP and a calcium channel gamma subunit. [provided by RefSeq, Dec 2010],

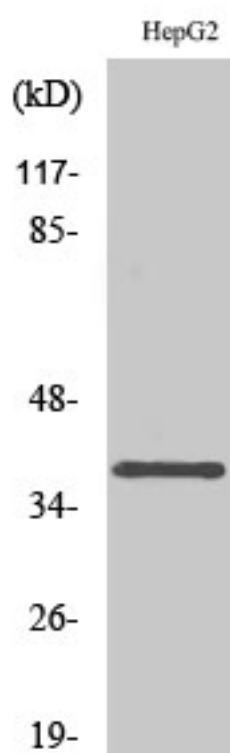
**matters needing attention**

Avoid repeated freezing and thawing!

**Usage suggestions**

This product can be used in immunological reaction related experiments. For more information, please consult technical personnel.

## Products Images



Western Blot analysis of various cells using L-type Ca<sup>++</sup> CP  $\gamma$ 7 Polyclonal Antibody diluted at 1:1000

Nanjing BYabs science technology Co.,Ltd

网址: [www.njbybio.com](http://www.njbybio.com)

官方热线: 025-5229-8998

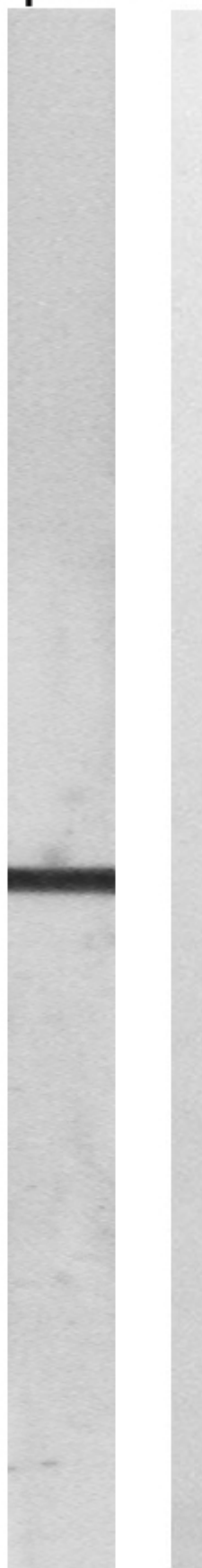
监督电话: 15950492658



HepG2 H

Western blot analysis of lysates from HepG2 cells, using CACNG7 Antibody. The lane on the right is blocked with the synthesized peptide.

CCG7--



Nanjing BYabs science technology Co.,Ltd



Nanjing BYabscience technology Co.,Ltd

网址: [www.njbybio.com](http://www.njbybio.com)

官方热线: 025-5229-8998

监督电话: 15950492658