



KVβ.3 Polyclonal Antibody

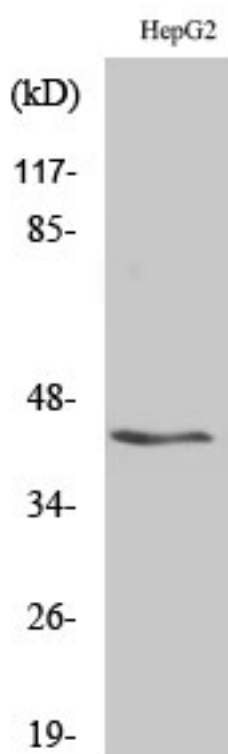
Catalog No	BYab-16460
Isotype	IgG
Reactivity	Human;Mouse;Rat
Applications	WB;IHC;IF;ELISA
Gene Name	KCNAB3
Protein Name	Voltage-gated potassium channel subunit beta-3
Immunogen	The antiserum was produced against synthesized peptide derived from human KCNAB3. AA range:293-342
Specificity	KVβ.3 Polyclonal Antibody detects endogenous levels of KVβ.3 protein.
Formulation	Liquid in PBS containing 50% glycerol, 0.5% BSA and 0.02% sodium azide.
Source	Polyclonal, Rabbit,IgG
Purification	The antibody was affinity-purified from rabbit antiserum by affinity-chromatography using epitope-specific immunogen.
Dilution	WB: 1/500 - 1/2000. IHC: 1/100 - 1/300. ELISA: 1/10000.. IF 1:50-200
Concentration	1 mg/ml
Purity	≥90%
Storage Stability	-20°C/1 year
Synonyms	KCNAB3; KCNA3B; Voltage-gated potassium channel subunit beta-3; K(+) channel subunit beta-3; Kv-beta-3
Observed Band	45kD
Cell Pathway	Cytoplasm .
Tissue Specificity	Brain specific. Most prominent expression in cerebellum. Weaker signals detected in cortex, occipital lobe, frontal lobe and temporal lobe. Not detected in spinal cord, heart, lung, liver, kidney, pancreas, placenta and skeletal muscle.
Function	domain:Alteration of functional properties of alpha subunit is mediated through N-terminal domain of beta subunit.,function:Accessory potassium channel protein which modulates the activity of the pore-forming alpha subunit. Alters the functional properties of Kv1.5.,similarity:Belongs to the shaker potassium channel beta subunit family.,subunit:Forms heteromultimeric complex with alpha subunits.,tissue specificity:Brain specific. Most prominent expression in cerebellum. Weaker signals detected in cortex, occipital lobe, frontal lobe and temporal lobe. Not detected in spinal cord, heart, lung, liver, kidney, pancreas, placenta and skeletal muscle.,

Nanjing BYabscience technology Co.,Ltd

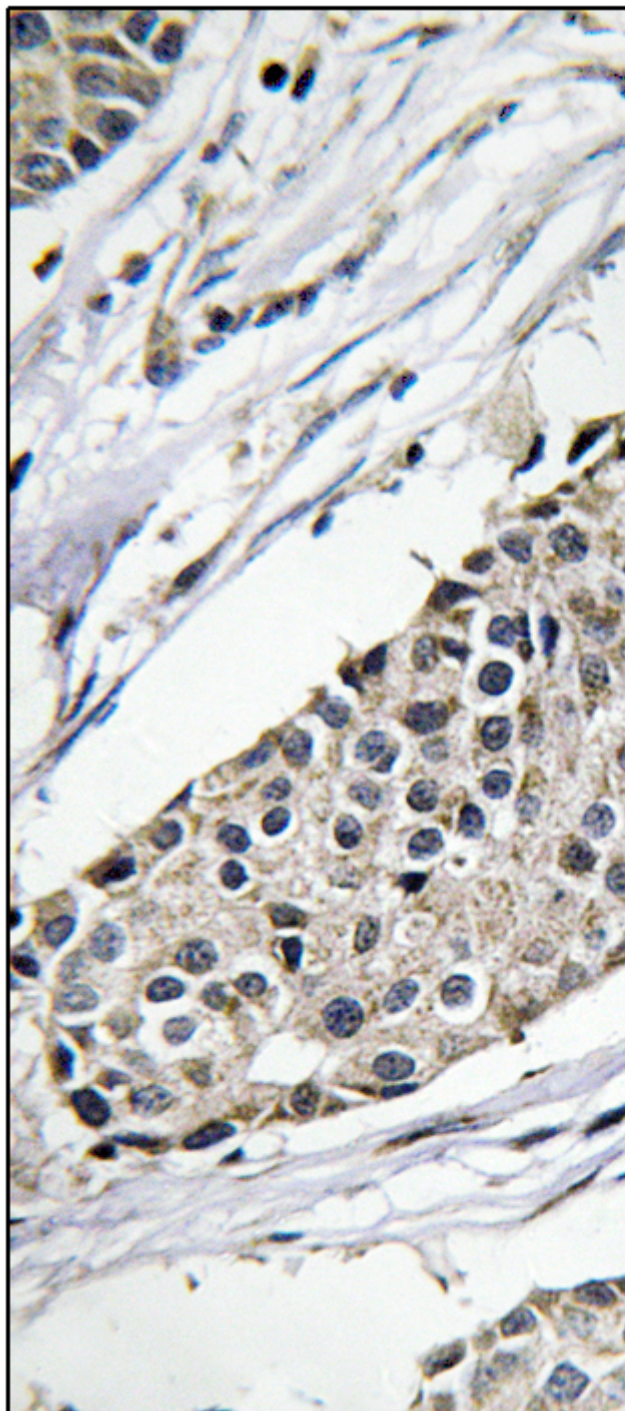


Background	This gene encodes a member of the potassium channel, voltage-gated, shaker-related subfamily. The encoded protein is one of the beta subunits, which are auxiliary proteins associating with functional Kv-alpha subunits. The encoded protein forms a heterodimer with the potassium voltage-gated channel, shaker-related subfamily, member 5 gene product and regulates the activity of the alpha subunit. [provided by RefSeq, May 2012],
matters needing attention	Avoid repeated freezing and thawing!
Usage suggestions	This product can be used in immunological reaction related experiments. For more information, please consult technical personnel.

Products Images



Western Blot analysis of various cells using KVβ.3 Polyclonal Antibody



Immunohistochemistry analysis of paraffin-embedded human breast carcinoma tissue, using KCNAB3 Antibody. The picture on the right is blocked with the synthesized peptide.

Nanjing BYabs science technology Co.,Ltd

网址: www.njbybio.com

官方热线: 025-5229-8998

监督电话: 15950492658