



# CLC-4 Polyclonal Antibody

<b>Catalog No</b>	BYab-16399
<b>Isotype</b>	IgG
<b>Reactivity</b>	Human;Mouse;Rat
<b>Applications</b>	WB;IF;ELISA
<b>Gene Name</b>	CLCN4
<b>Protein Name</b>	H(+)/Cl(-) exchange transporter 4
<b>Immunogen</b>	The antiserum was produced against synthesized peptide derived from human CLCN4. AA range:221-270
<b>Specificity</b>	CLC-4 Polyclonal Antibody detects endogenous levels of CLC-4 protein.
<b>Formulation</b>	Liquid in PBS containing 50% glycerol, 0.5% BSA and 0.02% sodium azide.
<b>Source</b>	Polyclonal, Rabbit,IgG
<b>Purification</b>	The antibody was affinity-purified from rabbit antiserum by affinity-chromatography using epitope-specific immunogen.
<b>Dilution</b>	Western Blot: 1/500 - 1/2000. Immunofluorescence: 1/200 - 1/1000. ELISA: 1/40000. Not yet tested in other applications.
<b>Concentration</b>	1 mg/ml
<b>Purity</b>	≥90%
<b>Storage Stability</b>	-20°C/1 year
<b>Synonyms</b>	CLCN4; H(+)/Cl(-) exchange transporter 4; Chloride channel protein 4; CLC-4; Chloride transporter CLC-4
<b>Observed Band</b>	85kD
<b>Cell Pathway</b>	Early endosome membrane ; Multi-pass membrane protein . Late endosome membrane ; Multi-pass membrane protein . Endoplasmic reticulum membrane ; Multi-pass membrane protein . Lysosome membrane ; Multi-pass membrane protein . Recycling endosome membrane ; Multi-pass membrane protein . Localizes to late endosome membrane, lysosome membrane and recycling endosome membrane in the presence of CLCN3. .
<b>Tissue Specificity</b>	Abundant in skeletal muscle and also detectable in brain and heart.
<b>Function</b>	function:Proton-coupled chloride transporter. Functions as antiport system and exchanges chloride ions against protons.,miscellaneous:The CLC channel family contains both chloride channels and proton-coupled anion transporters that exchange chloride or another anion for protons. The presence of conserved gating glutamate residues is typical for family members that function as antiporters.,similarity:Belongs to the chloride channel (TC 2.A.49)

**Nanjing BYabscience technology Co.,Ltd**



family.,similarity:Contains 2 CBS domains.,tissue specificity:Abundant in skeletal muscle and also detectable in brain and heart.,

**Background**

chloride voltage-gated channel 4(CLCN4) Homo sapiens The CLCN family of voltage-dependent chloride channel genes comprises nine members (CLCN1-7, Ka and Kb) which demonstrate quite diverse functional characteristics while sharing significant sequence homology. Chloride channel 4 has an evolutionary conserved CpG island and is conserved in both mouse and hamster. This gene is mapped in close proximity to APXL (Apical protein Xenopus laevis-like) and OA1 (Ocular albinism type I), which are both located on the human X chromosome at band p22.3. The physiological role of chloride channel 4 remains unknown but may contribute to the pathogenesis of neuronal disorders. Alternate splicing results in two transcript variants that encode different proteins. [provided by RefSeq, Mar 2012],

**matters needing attention**

Avoid repeated freezing and thawing!

**Usage suggestions**

This product can be used in immunological reaction related experiments. For more information, please consult technical personnel.

**Nanjing BYabscience technology Co.,Ltd**

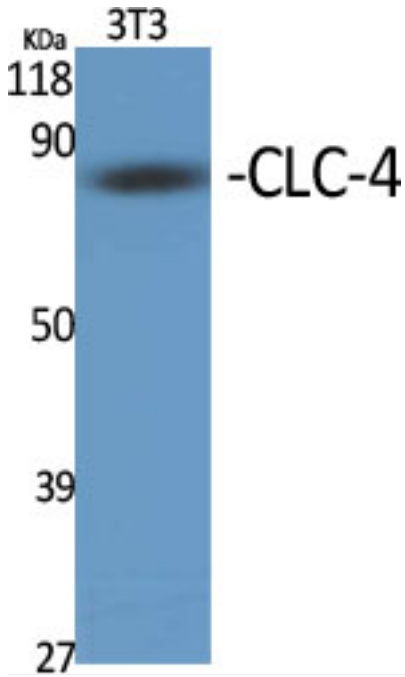
网址: [www.njbybio.com](http://www.njbybio.com)

官方热线: 025-5229-8998

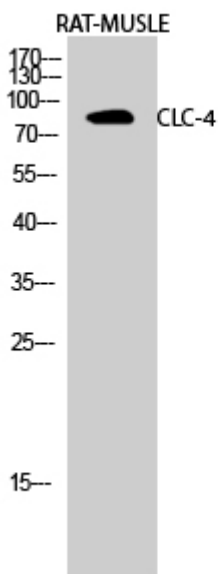
监督电话: 15950492658



## Products Images



Western Blot analysis of various cells using CLC-4 Polyclonal Antibody diluted at 1:500



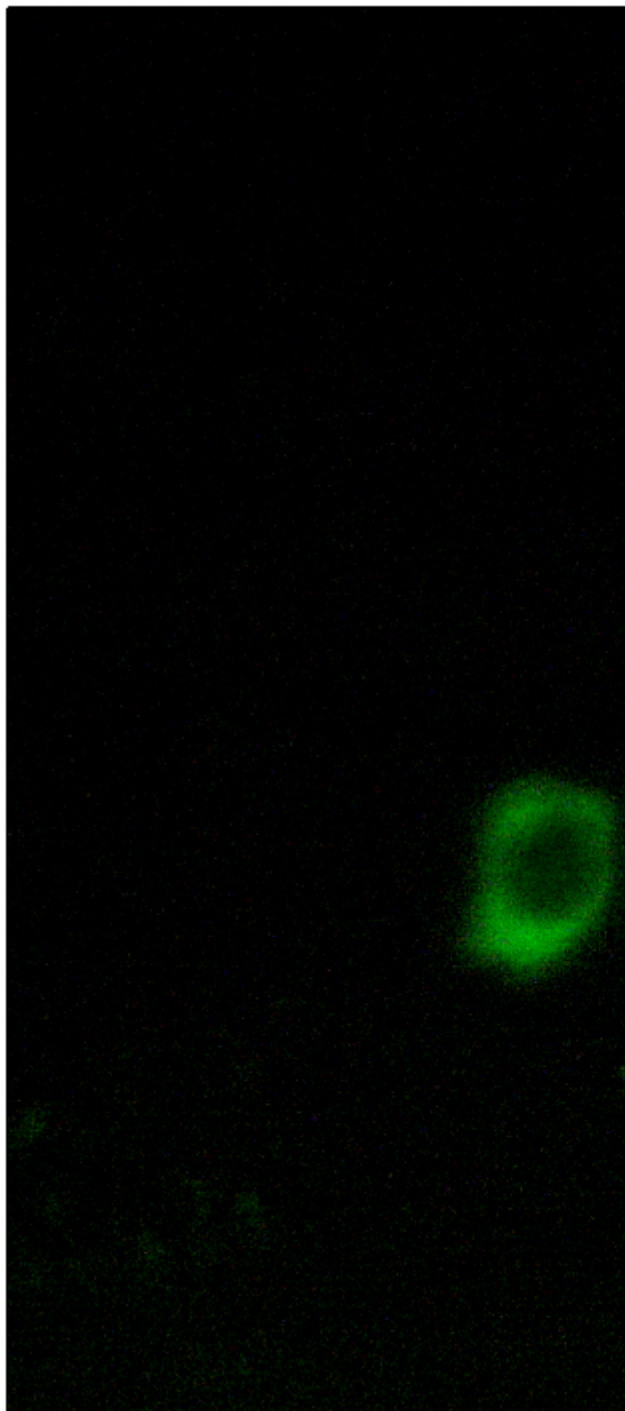
Western Blot analysis of RAT-MUSCLE cells using CLC-4 Polyclonal Antibody diluted at 1:500

Nanjing BYabs science technology Co.,Ltd

网址: [www.njbybio.com](http://www.njbybio.com)

官方热线: 025-5229-8998

监督电话: 15950492658



Immunofluorescence analysis of HUVEC cells, using CLCN4 Antibody. The picture on the right is blocked with the synthesized peptide.



Western blot analysis of lysates from MCF-7 cells, using CLCN4 Antibody. The lane on the right is blocked with the synthesized peptide.

# CLCN4 --



**Nanjing BYabscience technology Co.,Ltd**

网址: [www.njbybio.com](http://www.njbybio.com)

官方热线: 025-5229-8998

监督电话: 15950492658