



# Shd Polyclonal Antibody

Catalog No	BYab-16250
Isotype	IgG
Reactivity	Human;Rat;Mouse;
Applications	WB;ELISA
Gene Name	SHD
Protein Name	SH2 domain-containing adapter protein D
Immunogen	The antiserum was produced against synthesized peptide derived from human SHD. AA range:141-190
Specificity	Shd Polyclonal Antibody detects endogenous levels of Shd protein.
Formulation	Liquid in PBS containing 50% glycerol, 0.5% BSA and 0.02% sodium azide.
Source	Polyclonal, Rabbit,IgG
Purification	The antibody was affinity-purified from rabbit antiserum by affinity-chromatography using epitope-specific immunogen.
Dilution	Western Blot: 1/500 - 1/2000. ELISA: 1/40000. Not yet tested in other applications.
Concentration	1 mg/ml
Purity	≥90%
Storage Stability	-20°C/1 year
Synonyms	SHD; SH2 domain-containing adapter protein D
Observed Band	130kD
Cell Pathway	
Tissue Specificity	Neuroblastoma,
Function	function:May function as an adapter protein.,PTM:Tyrosine phosphorylated by ABL.,similarity:Contains 1 SH2 domain.,
Background	function:May function as an adapter protein.,PTM:Tyrosine phosphorylated by ABL.,similarity:Contains 1 SH2 domain.,
matters needing attention	Avoid repeated freezing and thawing!

Nanjing BYabscience technology Co.,Ltd

网址: [www.njbybio.com](http://www.njbybio.com)

官方热线: 025-5229-8998

监督电话: 15950492658



#### Usage suggestions

This product can be used in immunological reaction related experiments. For more information, please consult technical personnel.

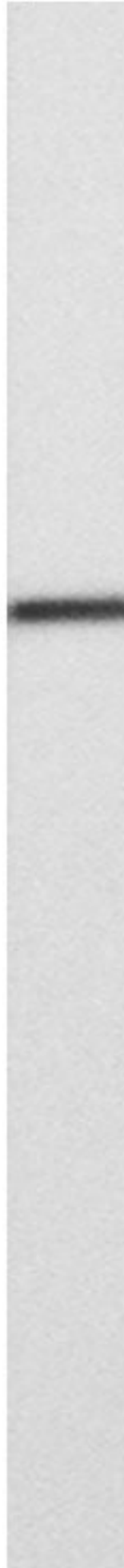
#### Products Images



HepG2

Western blot analysis of lysates from HepG2 cells, using SHD Antibody. The lane on the right is blocked with the synthesized peptide.

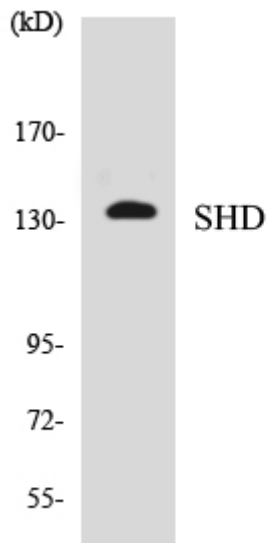
SHD--



nce technology Co.,Ltd

025-5229-8998

监督电话: 15950492658



Western blot analysis of the lysates from HepG2 cells using SHD antibody.