



# RASSF2 Polyclonal Antibody

<b>Catalog No</b>	BYab-16229
<b>Isotype</b>	IgG
<b>Reactivity</b>	Human;Mouse;Rat
<b>Applications</b>	WB;IHC
<b>Gene Name</b>	RASSF2
<b>Protein Name</b>	Ras association domain-containing protein 2
<b>Immunogen</b>	The antiserum was produced against synthesized peptide derived from human RASSF2. AA range:109-158
<b>Specificity</b>	RASSF2 Polyclonal Antibody detects endogenous levels of RASSF2 protein.
<b>Formulation</b>	Liquid in PBS containing 50% glycerol, 0.5% BSA and 0.02% sodium azide.
<b>Source</b>	Polyclonal, Rabbit,IgG
<b>Purification</b>	The antibody was affinity-purified from rabbit antiserum by affinity-chromatography using epitope-specific immunogen.
<b>Dilution</b>	WB 1:500-2000;IHC-p 1:50-300
<b>Concentration</b>	1 mg/ml
<b>Purity</b>	≥90%
<b>Storage Stability</b>	-20°C/1 year
<b>Synonyms</b>	RASSF2; KIAA0168; Ras association domain-containing protein 2
<b>Observed Band</b>	36kD
<b>Cell Pathway</b>	Nucleus. Cytoplasm. Chromosome, centromere, kinetochore . Translocates to the cytoplasm in the presence of STK3/MST2 AND STK4/MST1.
<b>Tissue Specificity</b>	Widely expressed with highest levels in brain, placenta, peripheral blood and lung. Frequently down-regulated in lung tumor cell lines.
<b>Function</b>	function:Potential tumor suppressor. Acts as a KRAS-specific effector protein. May promote apoptosis and cell cycle arrest.,similarity:Contains 1 Ras-associating domain.,similarity:Contains 1 SARAH domain.,subunit:Interacts directly with activated KRAS in a GTP-dependent manner.,tissue specificity:Widely expressed with highest levels in brain, placenta, peripheral blood and lung. Frequently down-regulated in lung tumor cell lines.,
<b>Background</b>	This gene encodes a protein that contains a Ras association domain. Similar to its cattle and sheep counterparts, this gene is located near the prion gene. Two alternatively spliced transcripts encoding the same isoform have been reported. [provided by RefSeq, Jul 2008],

**Nanjing BYabscience technology Co.,Ltd**



**matters needing attention**

Avoid repeated freezing and thawing!

**Usage suggestions**

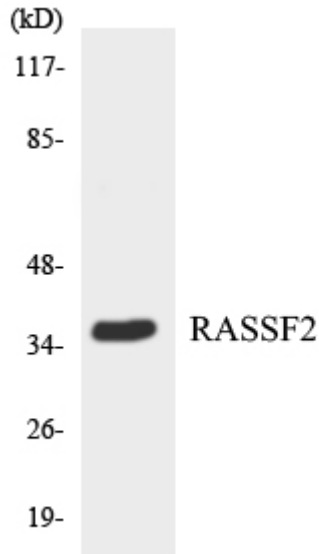
This product can be used in immunological reaction related experiments. For more information, please consult technical personnel.

**Products Images**

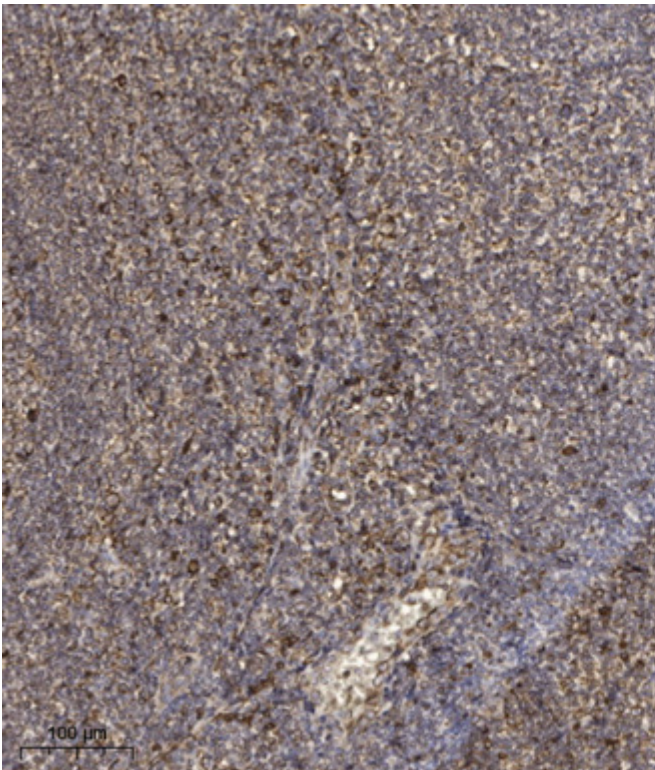


Western blot analysis of lysates from Jurkat cells, using RASSF2 Antibody. The lane on the right is blocked with the synthesized peptide.

RASF2--



Western blot analysis of the lysates from HepG2 cells using RASSF2 antibody.



Immunohistochemical analysis of paraffin-embedded human tonsil. 1, Antibody was diluted at 1:200(4° overnight). 2, Tris-EDTA,pH9.0 was used for antigen retrieval. 3,Secondary antibody was diluted at 1:200(room temperature, 45min).