



# Rad GTPase Polyclonal Antibody

<b>Catalog No</b>	BYab-16217
<b>Isotype</b>	IgG
<b>Reactivity</b>	Human;Rat;Mouse;
<b>Applications</b>	WB;IHC;IF;ELISA
<b>Gene Name</b>	RRAD
<b>Protein Name</b>	GTP-binding protein RAD
<b>Immunogen</b>	The antiserum was produced against synthesized peptide derived from human RAD. AA range:41-90
<b>Specificity</b>	Rad GTPase Polyclonal Antibody detects endogenous levels of Rad GTPase protein.
<b>Formulation</b>	Liquid in PBS containing 50% glycerol, 0.5% BSA and 0.02% sodium azide.
<b>Source</b>	Polyclonal, Rabbit,IgG
<b>Purification</b>	The antibody was affinity-purified from rabbit antiserum by affinity-chromatography using epitope-specific immunogen.
<b>Dilution</b>	Western Blot: 1/500 - 1/2000. Immunohistochemistry: 1/100 - 1/300. Immunofluorescence: 1/200 - 1/1000. ELISA: 1/20000. Not yet tested in other applications.
<b>Concentration</b>	1 mg/ml
<b>Purity</b>	≥90%
<b>Storage Stability</b>	-20°C/1 year
<b>Synonyms</b>	RRAD; RAD; GTP-binding protein RAD; RAD1; Ras associated with diabetes
<b>Observed Band</b>	33kD
<b>Cell Pathway</b>	Cell membrane .
<b>Tissue Specificity</b>	Most abundantly expressed in the heart. Also found in the skeletal muscle and lung. Lesser amounts in placenta and kidney. Also detected in adipose tissue. Overexpressed in muscle of type II diabetic humans.
<b>Function</b>	similarity:Belongs to the small GTPase superfamily. RGK family.,subunit:Interacts with calmodulin preferentially to the inactive, GDP-form. Binds CAMKII which is capable of phosphorylating RAD in vitro.,tissue specificity:Skeletal and cardiac muscle, and lung. Lesser amounts in placenta and kidney. Also detected in adipose tissue. Overexpressed in muscle of type II diabetic humans.,
<b>Background</b>	similarity:Belongs to the small GTPase superfamily. RGK family.,subunit:Interacts with calmodulin preferentially to the inactive, GDP-form. Binds CAMKII which is capable of phosphorylating RAD in vitro.,tissue specificity:Skeletal and cardiac

**Nanjing BYabscience technology Co.,Ltd**



muscle, and lung. Lesser amounts in placenta and kidney. Also detected in adipose tissue. Overexpressed in muscle of type II diabetic humans.,

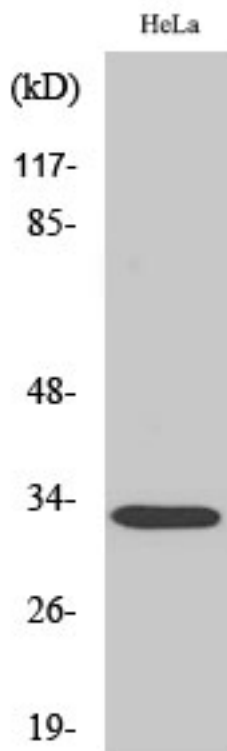
**matters needing attention**

Avoid repeated freezing and thawing!

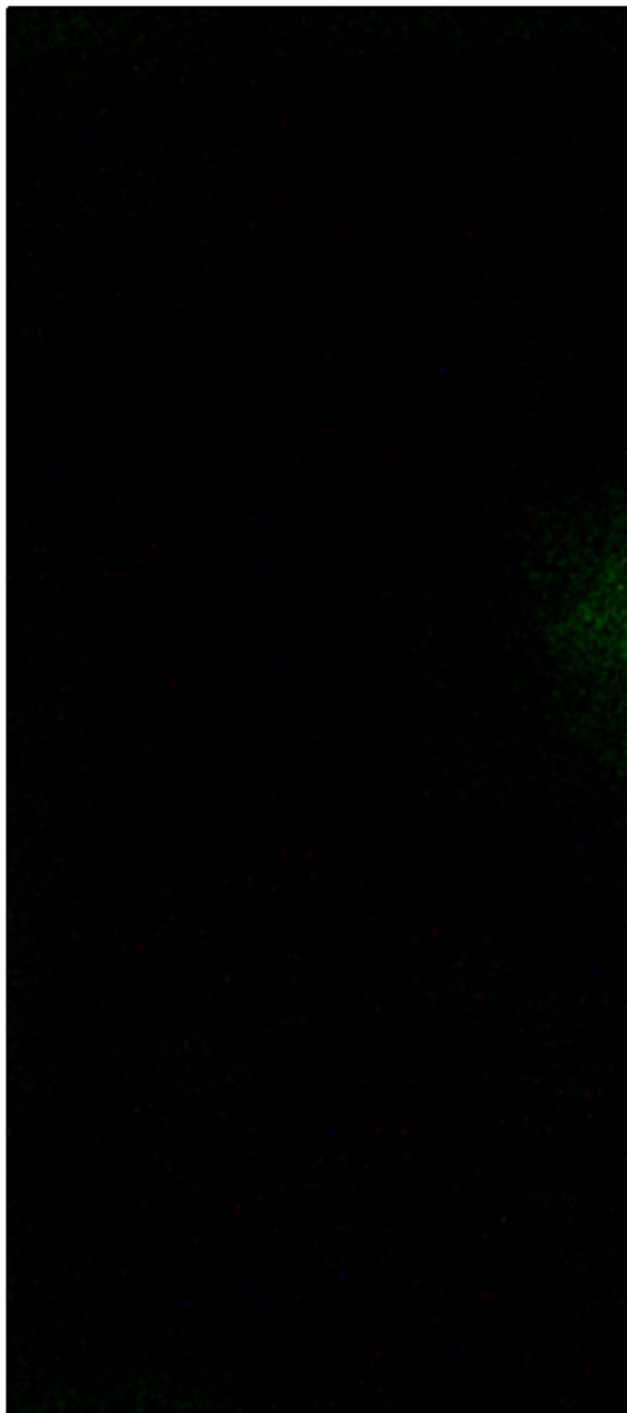
**Usage suggestions**

This product can be used in immunological reaction related experiments. For more information, please consult technical personnel.

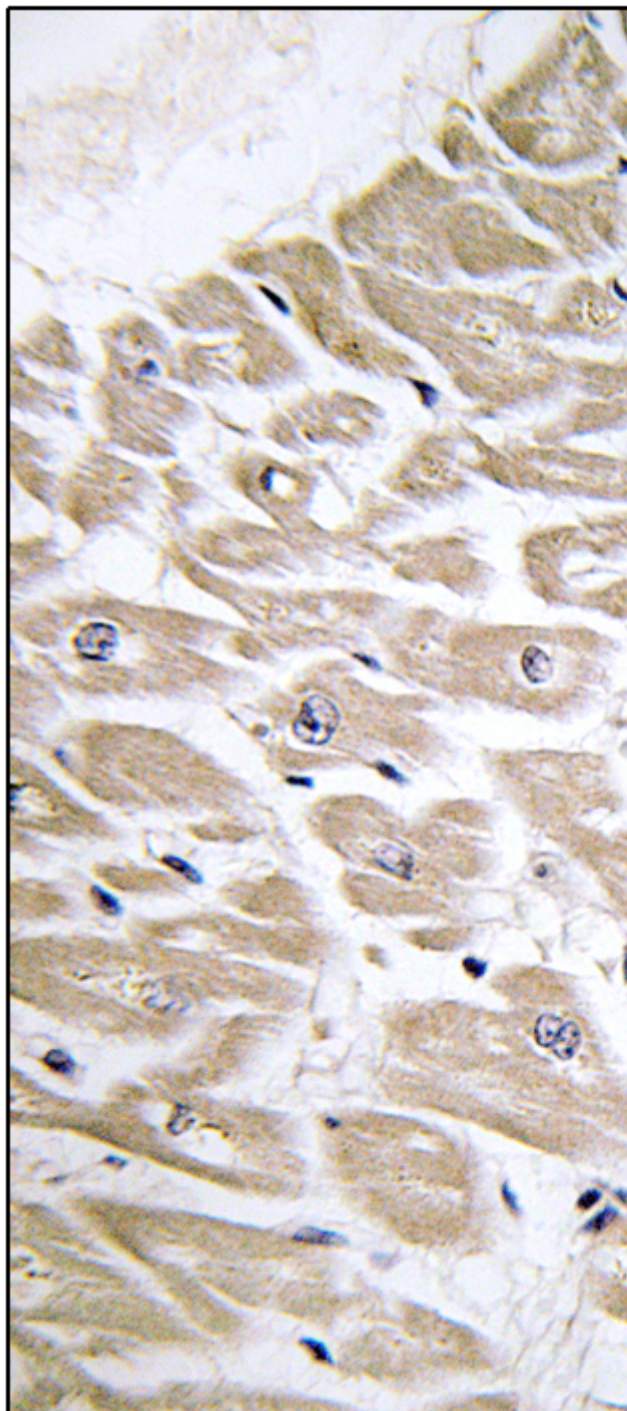
## Products Images



Western Blot analysis of various cells using Rad GTPase Polyclonal Antibody



Immunofluorescence analysis of A549 cells, using RAD Antibody. The picture on the right is blocked with the synthesized peptide.



Immunohistochemistry analysis of paraffin-embedded human heart tissue, using RAD Antibody. The picture on the right is blocked with the synthesized peptide.



HeLa

Western blot analysis of lysates from HeLa and HepG2/MCF-7 cells, using RAD Antibody. The lane on the right is blocked with the synthesized peptide.

RAD --



nce technology Co.,Ltd

025-5229-8998

监督电话: 15950492658



**Nanjing BYabscience technology Co.,Ltd**

网址: [www.njbybio.com](http://www.njbybio.com)

官方热线: 025-5229-8998

监督电话: 15950492658