



Rab 1B Polyclonal Antibody

Catalog No	BYab-16189
Isotype	IgG
Reactivity	Human;Mouse;Rat
Applications	WB;ELISA;IHC
Gene Name	RAB1B
Protein Name	Ras-related protein Rab-1B
Immunogen	Synthesized peptide derived from Rab 1B . at AA range: 50-130
Specificity	Rab 1B Polyclonal Antibody detects endogenous levels of Rab 1B protein.
Formulation	Liquid in PBS containing 50% glycerol, 0.5% BSA and 0.02% sodium azide.
Source	Polyclonal, Rabbit,IgG
Purification	The antibody was affinity-purified from rabbit antiserum by affinity-chromatography using epitope-specific immunogen.
Dilution	WB 1:500-2000;IHC-p 1:50-300; ELISA 2000-20000
Concentration	1 mg/ml
Purity	≥90%
Storage Stability	-20°C/1 year
Synonyms	RAB1B; Ras-related protein Rab-1B
Observed Band	22kD
Cell Pathway	Cytoplasm . Membrane ; Lipid-anchor ; Cytoplasmic side . Preautophagosomal structure membrane ; Lipid-anchor ; Cytoplasmic side . Cytoplasm, perinuclear region . Targeted by REP1 to membranes of specific subcellular compartments including endoplasmic reticulum, Golgi apparatus, and intermediate vesicles between these two compartments (PubMed:11389151). In the GDP-form, colocalizes with GDI in the cytoplasm (PubMed:11389151). Co-localizes with MTMR6 to the endoplasmic reticulum-Golgi intermediate compartment and to the peri-Golgi region (By similarity). .
Tissue Specificity	B-cell lymphoma,Brain,Muscle,Pancreas,
Function	function:Protein transport. Regulates vesicular transport between the endoplasmic reticulum and successive Golgi compartments.,miscellaneous:Rab-1B binds GTP and GDP and possesses intrinsic GTPase activity.,PTM:Prenylated; by GGTase II, only after interaction of the substrate with Rab escort protein 1 (REP1).,similarity:Belongs to the small GTPase superfamily. Rab family.,subcellular location:Targeted by REP1 to

Nanjing BYabscience technology Co.,Ltd



membranes of specific subcellular compartments including endoplasmic reticulum, Golgi apparatus, and intermediate vesicles between these two compartments. In the GDP-form, colocalizes with GDI in the cytoplasm.,subunit:Interacts with MICAL1, MICAL2 and MICAL3. Interacts with GDI1; the interaction requires the GDP-bound state. Interacts with CHM/REP1; the interaction requires the GDP-bound form and is necessary for prenylation by GGTase II.,

Background

Members of the RAB protein family, such as RAB1B, are low molecular mass monomeric GTPases localized on the cytoplasmic surfaces of distinct membrane-bound organelles. RAB1B functions in the early secretory pathway and is essential for vesicle transport between the endoplasmic reticulum (ER) and Golgi (Chen et al., 1997 [PubMed 9030196]; Alvarez et al., 2003 [PubMed 12802079]).[supplied by OMIM, Jan 2009],

matters needing attention

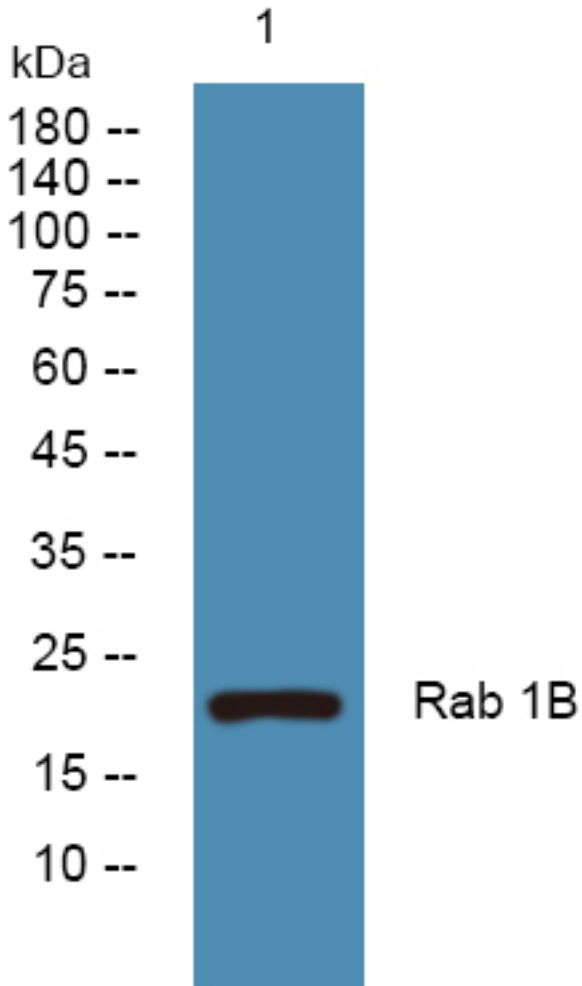
Avoid repeated freezing and thawing!

Usage suggestions

This product can be used in immunological reaction related experiments. For more information, please consult technical personnel.



Products Images

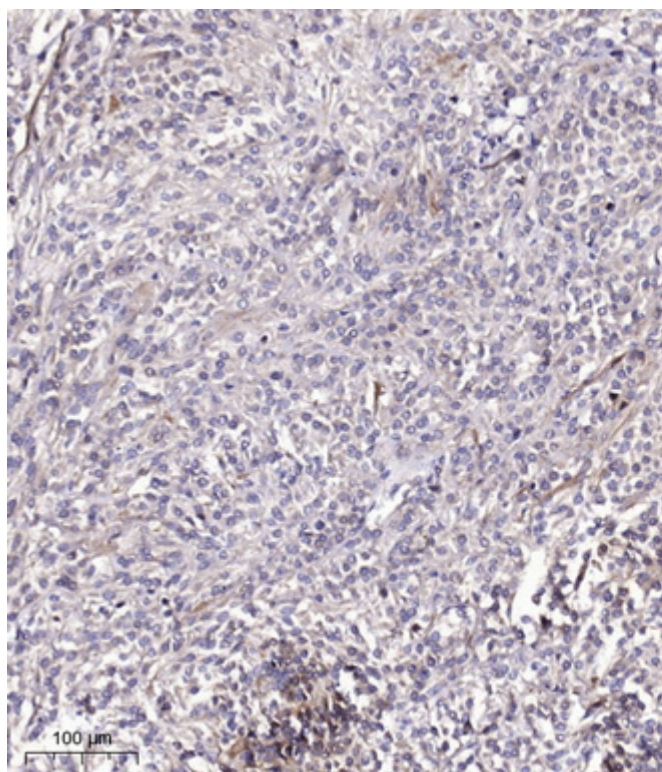


Nanjing BYabs science technology Co.,Ltd

网址: www.njbybio.com

官方热线: 025-5229-8998

监督电话: 15950492658



Immunohistochemical analysis of paraffin-embedded human Colon cancer. 1, Antibody was diluted at 1:200(4° overnight). 2, Tris-EDTA,pH9.0 was used for antigen retrieval. 3,Secondary antibody was diluted at 1:200(room temperature, 45min).