



p164-RhoGEF Polyclonal Antibody

Catalog No	BYab-16185
Isotype	IgG
Reactivity	Human;Mouse
Applications	IHC;IF;ELISA
Gene Name	ARHGEF17
Protein Name	Rho guanine nucleotide exchange factor 17
Immunogen	The antiserum was produced against synthesized peptide derived from human ARHGEF17. AA range:431-480
Specificity	p164-RhoGEF Polyclonal Antibody detects endogenous levels of p164-RhoGEF protein.
Formulation	Liquid in PBS containing 50% glycerol, 0.5% BSA and 0.02% sodium azide.
Source	Polyclonal, Rabbit,IgG
Purification	The antibody was affinity-purified from rabbit antiserum by affinity-chromatography using epitope-specific immunogen.
Dilution	Immunohistochemistry: 1/100 - 1/300. Immunofluorescence: 1/200 - 1/1000. ELISA: 1/5000. Not yet tested in other applications.
Concentration	1 mg/ml
Purity	≥90%
Storage Stability	-20°C/1 year
Synonyms	ARHGEF17; KIAA0337; TEM4; Rho guanine nucleotide exchange factor 17; 164 kDa Rho-specific guanine-nucleotide exchange factor; p164-RhoGEF; p164RhoGEF; Tumor endothelial marker 4
Observed Band	
Cell Pathway	cytosol,
Tissue Specificity	Highly expressed in the heart.
Function	function:Acts as guanine nucleotide exchange factor (GEF) for RhoA GTPases.,similarity:Contains 1 DH (DBL-homology) domain.,tissue specificity:Highly expressed in the heart.,
Background	function:Acts as guanine nucleotide exchange factor (GEF) for RhoA GTPases.,similarity:Contains 1 DH (DBL-homology) domain.,tissue specificity:Highly expressed in the heart.,

Nanjing BYabscience technology Co.,Ltd



matters needing attention

Avoid repeated freezing and thawing!

Usage suggestions

This product can be used in immunological reaction related experiments. For more information, please consult technical personnel.

Nanjing BYabscience technology Co.,Ltd

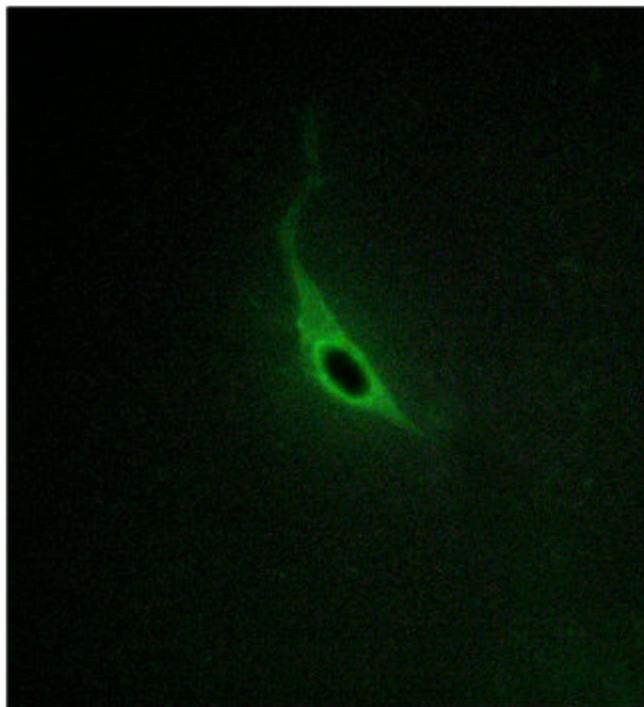
网址: www.njbybio.com

官方热线: 025-5229-8998

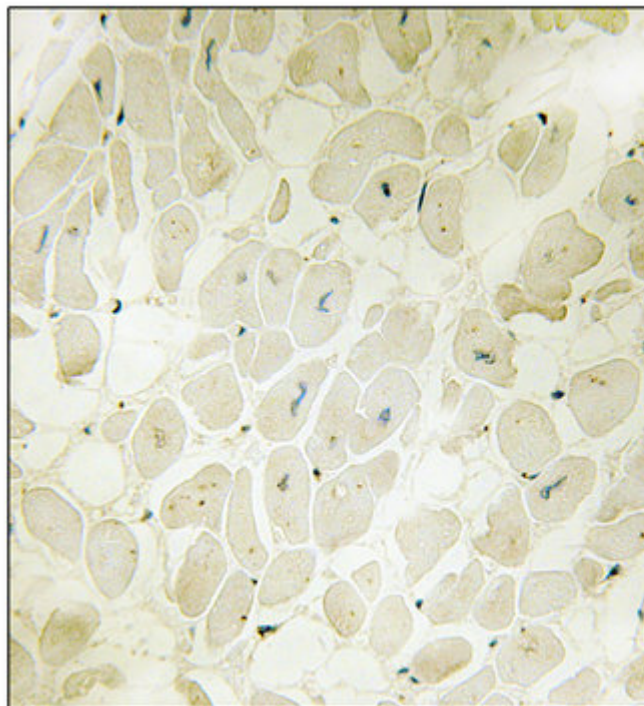
监督电话: 15950492658



Products Images



Immunofluorescence analysis of HepG2 cells, using CARD6 Antibody diluted at 1:50. The picture on the right is blocked with the synthesized peptide.



Immunohistochemical analysis of paraffin-human heart. 1, Antibody was diluted at 1:200(4° overnight). 2, TRIS-EDTA of pH8.0 was used for antigen retrieval. 3, Secondary antibody was diluted at 1:200(room temperature, 30min). The picture on the right is blocked with the synthesized peptide.