



GUF1 Polyclonal Antibody

Catalog No	BYab-16169
Isotype	IgG
Reactivity	Human;Rat;Mouse;
Applications	IHC;IF;ELISA
Gene Name	GUF1
Protein Name	Translation factor GUF1 mitochondrial
Immunogen	The antiserum was produced against synthesized peptide derived from human GUF1. AA range:421-470
Specificity	GUF1 Polyclonal Antibody detects endogenous levels of GUF1 protein.
Formulation	Liquid in PBS containing 50% glycerol, 0.5% BSA and 0.02% sodium azide.
Source	Polyclonal, Rabbit,IgG
Purification	The antibody was affinity-purified from rabbit antiserum by affinity-chromatography using epitope-specific immunogen.
Dilution	IHC: 1/100 - 1/300. ELISA: 1/20000.. IF 1:50-200
Concentration	1 mg/ml
Purity	≥90%
Storage Stability	-20°C/1 year
Synonyms	GUF1; Translation factor GUF1; mitochondrial; Elongation factor 4 homolog; EF-4; GTPase GUF1; Ribosomal back-translocase
Observed Band	
Cell Pathway	Mitochondrion inner membrane ; Peripheral membrane protein ; Matrix side .
Tissue Specificity	Brain,Colon,Lung adenocarcinoma,Teratocarcinoma,
Function	similarity:Belongs to the GTP-binding elongation factor family. LepA subfamily.,
Background	This gene encodes a GTPase that triggers back-translocation of the elongating ribosome during mitochondrial protein synthesis. The protein contains a highly conserved C-terminal domain not found in other GTPases that facilitates tRNA binding. The encoded protein is thought to prevent misincorporation of amino acids in stressful, suboptimal conditions. An allelic variant in this gene has been associated with early infantile epileptic encephalopathy-40. Alternative splicing results in multiple transcript variants. [provided by RefSeq, Sep 2016],

Nanjing BYabs science technology Co.,Ltd



matters needing attention

Avoid repeated freezing and thawing!

Usage suggestions

This product can be used in immunological reaction related experiments. For more information, please consult technical personnel.

Nanjing BYabscience technology Co.,Ltd

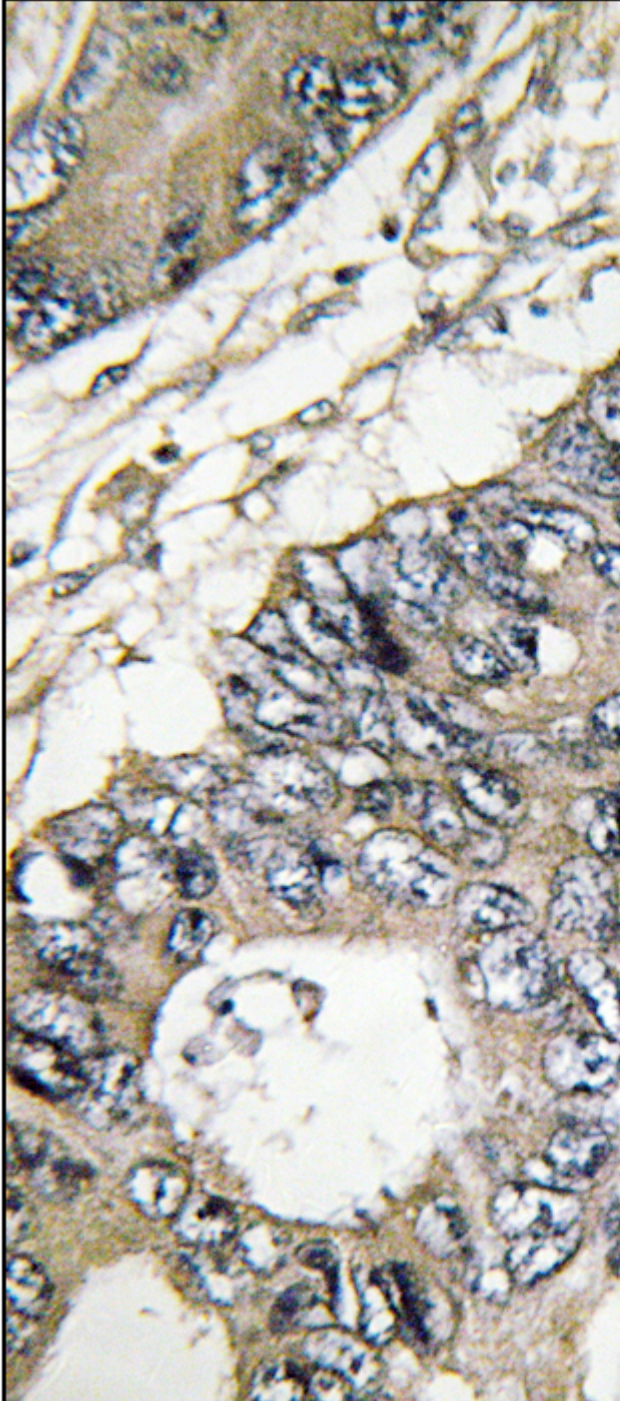
网址: www.njbybio.com

官方热线: 025-5229-8998

监督电话: 15950492658



Products Images



Immunohistochemistry analysis of paraffin-embedded human colon carcinoma tissue, using GUF1 Antibody. The picture on the right is blocked with the synthesized peptide.

Nanjing BYabscience technology Co.,Ltd

网址: www.njbybio.com

官方热线: 025-5229-8998

监督电话: 15950492658



Nanjing BYabscience technology Co.,Ltd

网址: www.njbybio.com

官方热线: 025-5229-8998

监督电话: 15950492658