



# G3BP1 (phospho Ser232) Polyclonal Antibody

|                    |  |
|--------------------|--|
| Catalog No         | BYab-16108   |
| Isotype            | IgG  |
| Reactivity         | Human;Mouse  |
| Applications       | WB;IHC;IF;ELISA  |
| Gene Name          | G3BP1  |
| Protein Name       | Ras GTPase-activating protein-binding protein 1  |
| Immunogen          | The antiserum was produced against synthesized peptide derived from human G3BP-1 around the phosphorylation site of Ser232. AA range:216-248   |
| Specificity        | Phospho-G3BP1 (S232) Polyclonal Antibody detects endogenous levels of G3BP1 protein only when phosphorylated at S232.  |
| Formulation        | Liquid in PBS containing 50% glycerol, 0.5% BSA and 0.02% sodium azide.  |
| Source             | Polyclonal, Rabbit,IgG   |
| Purification       | The antibody was affinity-purified from rabbit antiserum by affinity-chromatography using epitope-specific immunogen.  |
| Dilution           | WB: 1/500 - 1/2000. IHC: 1/100 - 1/300. ELISA: 1/5000.. IF 1:50-200  |
| Concentration      | 1 mg/ml  |
| Purity             | ≥90%   |
| Storage Stability  | -20°C/1 year   |
| Synonyms           | G3BP1; G3BP; Ras GTPase-activating protein-binding protein 1; G3BP-1; ATP-dependent DNA helicase VIII; hDH VIII; GAP SH3 domain-binding protein 1  |
| Observed Band      | 60kD   |
| Cell Pathway       | Cytoplasm, cytosol . Perikaryon . Cytoplasm, Stress granule . Nucleus . Cytoplasmic in proliferating cells (PubMed:11604510). Cytosolic and partially nuclear in resting cells (PubMed:11604510). Recruited to stress granules in response to arsenite treatment (PubMed:12642610, PubMed:20180778). The unphosphorylated form is recruited to stress granules (PubMed:12642610). HRAS signaling contributes to this process by regulating G3BP dephosphorylation (PubMed:12642610). . |
| Tissue Specificity | Ubiquitous.  |
| Function           | cofactor:Magnesium. Required for helicase activity.,domain:The NTF2 domain mediates multimerization.,function:May be a regulated effector of stress granule assembly. Phosphorylation-dependent sequence-specific endoribonuclease in vitro. Cleaves exclusively between cytosine and adenine and cleaves MYC mRNA preferentially at the 3'-UTR. ATP- and magnesium-dependent helicase. Unwinds  |

Nanjing BYabscience technology Co.,Ltd



preferentially partial DNA and RNA duplexes having a 17 bp annealed portion and either a hanging 3' tail or hanging tails at both 5'- and 3'-ends. Unwinds DNA/DNA, RNA/DNA, and RNA/RNA substrates with comparable efficiency. Acts unidirectionally by moving in the 5' to 3' direction along the bound single-stranded DNA.,PTM:Arg-435 is dimethylated, probably to asymmetric dimethylarginine.,PTM:Phosphorylated exclusively on serine residues. Hyperphosphorylated in quiescent fibroblasts. Hypophosphorylation leads to a

#### Background

This gene encodes one of the DNA-unwinding enzymes which prefers partially unwound 3'-tailed substrates and can also unwind partial RNA/DNA and RNA/RNA duplexes in an ATP-dependent fashion. This enzyme is a member of the heterogeneous nuclear RNA-binding proteins and is also an element of the Ras signal transduction pathway. It binds specifically to the Ras-GTPase-activating protein by associating with its SH3 domain. Several alternatively spliced transcript variants of this gene have been described, but the full-length nature of some of these variants has not been determined. [provided by RefSeq, Jul 2008],

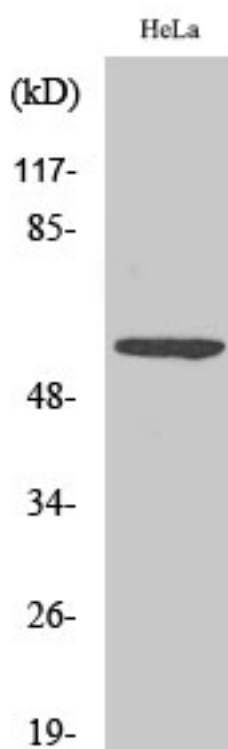
#### matters needing attention

Avoid repeated freezing and thawing!

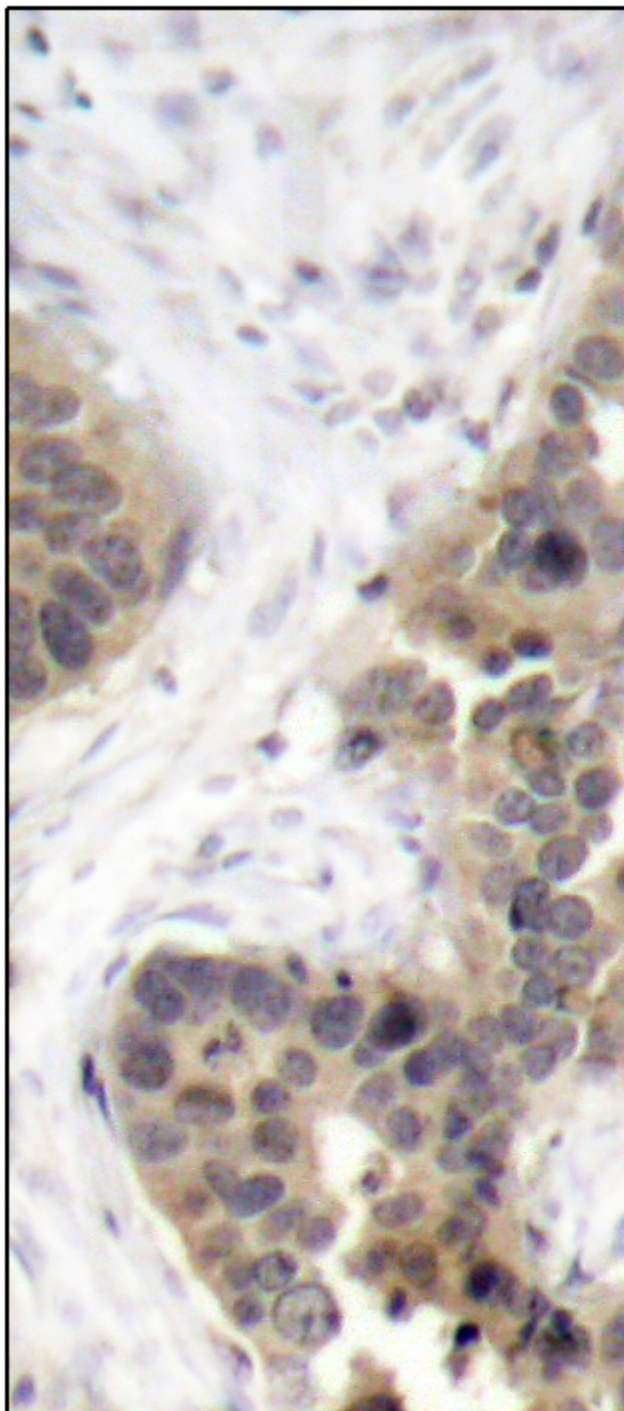
#### Usage suggestions

This product can be used in immunological reaction related experiments. For more information, please consult technical personnel.

## Products Images



Western Blot analysis of various cells using Phospho-G3BP1 (S232) Polyclonal Antibody



Immunohistochemistry analysis of paraffin-embedded human breast cancer, using G3BP-1 (Phospho-Ser232) Antibody. The picture on the right is blocked with the G3BP-1 (Phospho-Ser232) peptide.



Western blot analysis of extracts from HeLa cells, using G3BP-1 (Phospho-Ser232) Antibody. The lane on the right is treated with the synthesized peptide.

# G3BP-1 (pSer232)



Nanjing BYabscience technology Co.,Ltd

网址: [www.njbybio.com](http://www.njbybio.com)

官方热线: 025-5229-8998

监督电话: 15950492658