



# SCGF Polyclonal Antibody

<b>Catalog No</b>	BYab-16072
<b>Isotype</b>	IgG
<b>Reactivity</b>	Human;Mouse
<b>Applications</b>	WB;IHC;IF;ELISA
<b>Gene Name</b>	CLEC11A
<b>Protein Name</b>	C-type lectin domain family 11 member A
<b>Immunogen</b>	The antiserum was produced against synthesized peptide derived from the N-terminal region of human CLEC11A. AA range:1-50
<b>Specificity</b>	SCGF Polyclonal Antibody detects endogenous levels of SCGF protein.
<b>Formulation</b>	Liquid in PBS containing 50% glycerol, 0.5% BSA and 0.02% sodium azide.
<b>Source</b>	Polyclonal, Rabbit,IgG
<b>Purification</b>	The antibody was affinity-purified from rabbit antiserum by affinity-chromatography using epitope-specific immunogen.
<b>Dilution</b>	WB: 1/500 - 1/2000. IHC-p: 1:100-1:300. ELISA: 1/10000.. IF 1:50-200
<b>Concentration</b>	1 mg/ml
<b>Purity</b>	≥90%
<b>Storage Stability</b>	-20°C/1 year
<b>Synonyms</b>	CLEC11A; CLECSF3; LSLCL; SCGF; C-type lectin domain family 11 member A; C-type lectin superfamily member 3; Lymphocyte secreted C-type lectin; Stem cell growth factor; p47
<b>Observed Band</b>	30kD
<b>Cell Pathway</b>	Cytoplasm . Secreted .
<b>Tissue Specificity</b>	Expressed in skeletal tissues including bone marrow, chondrocytes, primary ossification center-associated cells, the perichondrium and periosteum. Lower levels of expression were detected in spleen, thymus, appendix and fetal liver.
<b>Function</b>	developmental stage:In the bone marrow, expression is limited to immature neutrophils. Expression was not detected in circulating mature neutrophils.,function:Stimulates the proliferation and differentiation of hematopoietic precursor cells from various lineages, including erythrocytes, lymphocytes, granulocytes and macrophages. Acts synergistically with other cytokines, including IL-3, GCSF, GMCSF and FLT3 ligand. Suppresses SCF-stimulated erythrocyte proliferation.,online information:Stem cell growth factor,PTM:O-glycosylated. Probably sulfated on the

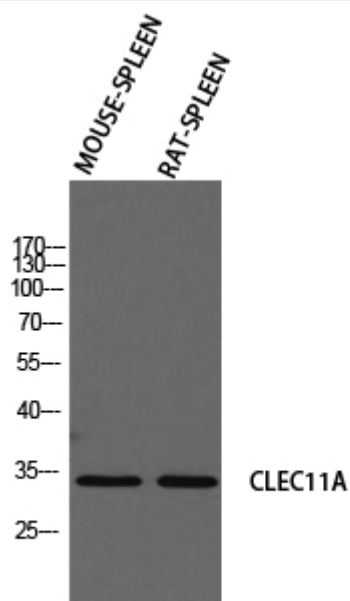
**Nanjing BYabs science technology Co.,Ltd**



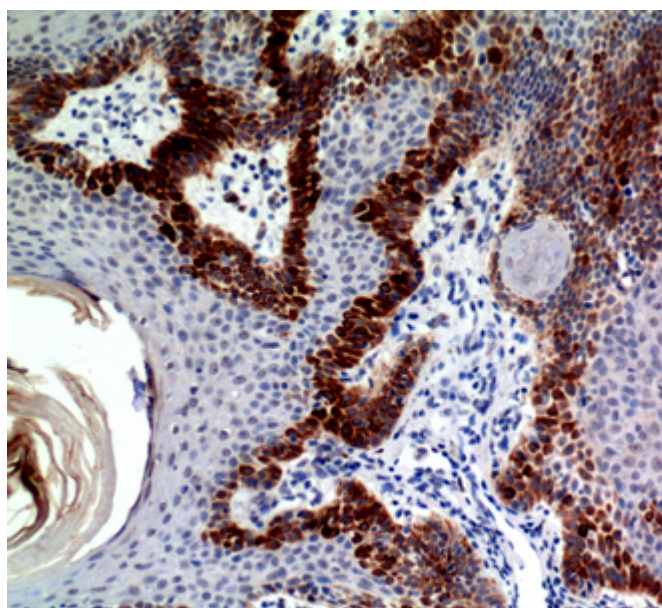
	O-glycans.,similarity:Contains 1 C-type lectin domain.,tissue specificity:Expressed in skeletal tissues including bone marrow, chondrocytes, primary ossification center-associated cells, the perichondrium and periosteum. Lower levels of expression were detected in spleen, thymus, appendix and fetal liver.,
<b>Background</b>	This gene encodes a member of the C-type lectin superfamily. The encoded protein is a secreted sulfated glycoprotein and functions as a growth factor for primitive hematopoietic progenitor cells. An alternative splice variant has been described but its biological nature has not been determined. [provided by RefSeq, Jul 2008],
<b>matters needing attention</b>	Avoid repeated freezing and thawing!
<b>Usage suggestions</b>	This product can be used in immunological reaction related experiments. For more information, please consult technical personnel.



## Products Images



Western blot analysis of MOUSE-SPLEEN  
RAT-SPLEEN using CLEC11A antibody. Antibody was  
diluted at 1:2000. Secondary  
antibody(catalog#:RS0002) was diluted at 1:20000



Immunohistochemical analysis of paraffin-embedded  
human-skin, antibody was diluted at 1:100

Nanjing BYabs science technology Co.,Ltd

网址: [www.njbybio.com](http://www.njbybio.com)

官方热线: 025-5229-8998

监督电话: 15950492658