



Probetacellulin Polyclonal Antibody

Catalog No	BYab-16056
Isotype	IgG
Reactivity	Human;Rat;Mouse;
Applications	WB;ELISA;IHC
Gene Name	BTC
Protein Name	Probetacellulin
Immunogen	The antiserum was produced against synthesized peptide derived from the Internal region of human BTC. AA range:21-70
Specificity	Probetacellulin Polyclonal Antibody detects endogenous levels of Probetacellulin protein.
Formulation	Liquid in PBS containing 50% glycerol, 0.5% BSA and 0.02% sodium azide.
Source	Polyclonal, Rabbit,IgG
Purification	The antibody was affinity-purified from rabbit antiserum by affinity-chromatography using epitope-specific immunogen.
Dilution	WB 1:500-2000;IHC-p 1:50-300; ELISA 2000-20000
Concentration	1 mg/ml
Purity	≥90%
Storage Stability	-20°C/1 year
Synonyms	BTC; Probetacellulin
Observed Band	20kD
Cell Pathway	[Betacellulin]: Secreted, extracellular space.; [Probetacellulin]: Cell membrane; Single-pass type I membrane protein.
Tissue Specificity	Synthesized in several tissues and tumor cells. Predominantly expressed in pancreas and small intestine.
Function	disease:Betacellulin from beta cells could play a role in the vascular complications associated with diabetes.,function:Potent mitogen for retinal pigment epithelial cells and vascular smooth muscle cells. The effects of betacellulin are probably mediated by the EGF receptor and other related receptors.,similarity:Contains 1 EGF-like domain.,subunit:Monomer.,tissue specificity:Synthesized in several tissues and tumor cells. Predominantly expressed in pancreas and small intestine.,
Background	This gene encodes a member of the epidermal growth factor (EGF) family of proteins. Alternative splicing results in multiple transcript variants, at least one of which encodes a preproprotein that is proteolytically processed to generate the

Nanjing BYabscience technology Co.,Ltd



secreted growth factor. A secreted form and a membrane-anchored form of this protein bind to multiple different EGF receptors. This protein promotes pancreatic cell proliferation and insulin secretion, as well as retinal vascular permeability. Mutations in this gene may be associated with type 2 diabetes in human patients. [provided by RefSeq, Nov 2015],

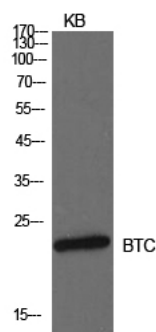
matters needing attention

Avoid repeated freezing and thawing!

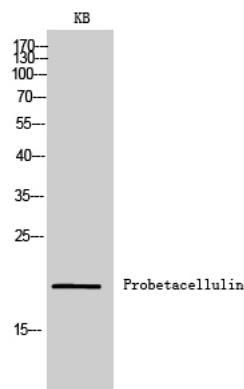
Usage suggestions

This product can be used in immunological reaction related experiments. For more information, please consult technical personnel.

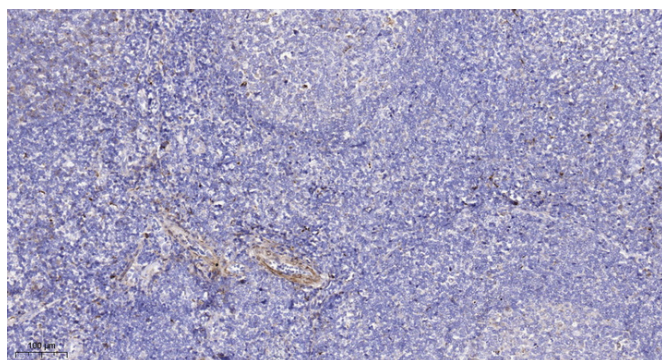
Products Images



Western Blot analysis of KB cells using Probetacellulin Polyclonal Antibody. Secondary antibody(catalog#:RS0002) was diluted at 1:20000



Western Blot analysis of KB cells using Probetacellulin Polyclonal Antibody. Secondary antibody(catalog#:RS0002) was diluted at 1:20000



Immunohistochemical analysis of paraffin-embedded human tonsil. 1, Antibody was diluted at 1:200(4° overnight). 2, Tris-EDTA,pH9.0 was used for antigen retrieval. 3,Secondary antibody was diluted at 1:200(room temperature, 45min).

Nanjing BYabscience technology Co.,Ltd

网址: www.njbybio.com

官方热线: 025-5229-8998

监督电话: 15950492658