



Nov Polyclonal Antibody

Catalog No	BYab-16032
Isotype	IgG
Reactivity	Human;Mouse
Applications	WB;IHC;IF;ELISA
Gene Name	NOV
Protein Name	Protein NOV homolog
Immunogen	The antiserum was produced against synthesized peptide derived from the Internal region of human NOV. AA range:221-270
Specificity	Nov Polyclonal Antibody detects endogenous levels of Nov protein.
Formulation	Liquid in PBS containing 50% glycerol, 0.5% BSA and 0.02% sodium azide.
Source	Polyclonal, Rabbit,IgG
Purification	The antibody was affinity-purified from rabbit antiserum by affinity-chromatography using epitope-specific immunogen.
Dilution	WB: 1/500 - 1/2000. IHC-p: 1/100-1/300. ELISA: 1/20000.. IF 1:50-200
Concentration	1 mg/ml
Purity	≥90%
Storage Stability	-20°C/1 year
Synonyms	NOV; CCN3; IGFBP9; NOVH; Protein NOV homolog; NovH; CCN family member 3; Insulin-like growth factor-binding protein 9; IBP-9; IGF-binding protein 9; IGFBP-9; Nephroblastoma-overexpressed gene protein homolog
Observed Band	39kD
Cell Pathway	Secreted. Cytoplasm . Cell junction, gap junction . Localizes at the gap junction in presence of GJA1. .
Tissue Specificity	Expressed in endiothelial cells (at protein level) (PubMed:21063504). Expressed in bone marrow, thymic cells and nephroblastoma. Increased expression in Wilms tumor of the stromal type.
Function	function:Immediate-early protein likely to play a role in cell growth regulation.,similarity:Belongs to the CCN family.,similarity:Contains 1 CTCK (C-terminal cystine knot-like) domain.,similarity:Contains 1 IGFBP N-terminal domain.,similarity:Contains 1 TSP type-1 domain.,similarity:Contains 1 VWFC domain.,subunit:Interacts with FBLN1.,tissue specificity:Increased expression in Wilms tumor of the stromal type.,

Nanjing BYabscience technology Co.,Ltd



Background

The protein encoded by this gene is a small secreted cysteine-rich protein and a member of the CCN family of regulatory proteins. CCN family proteins associate with the extracellular matrix and play an important role in cardiovascular and skeletal development, fibrosis and cancer development. [provided by RefSeq, Feb 2009],

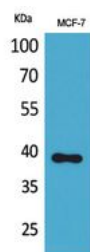
matters needing attention

Avoid repeated freezing and thawing!

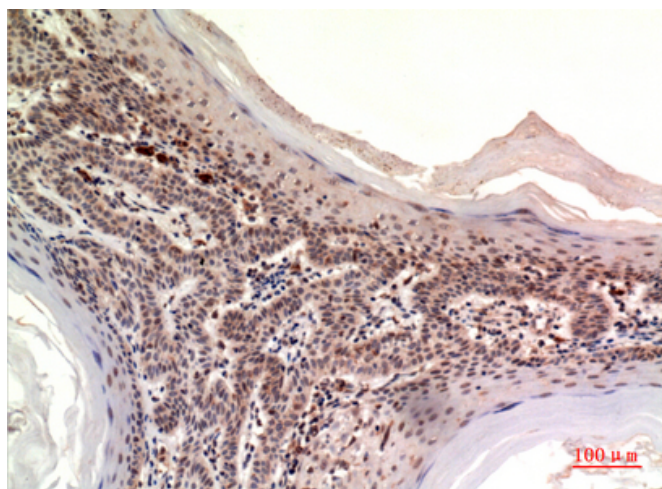
Usage suggestions

This product can be used in immunological reaction related experiments. For more information, please consult technical personnel.

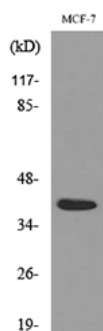
Products Images



Western Blot analysis of MCF-7 cells using Nov Polyclonal Antibody. Secondary antibody(catalog#:RS0002) was diluted at 1:20000



Immunohistochemical analysis of paraffin-embedded human-skin, antibody was diluted at 1:100



Western blot analysis of lysate from MCF-7 cells, using NOV Antibody.

Nanjing BYabscience technology Co.,Ltd