



Lymphotactin Polyclonal Antibody

Catalog No	BYab-16020
Isotype	IgG
Reactivity	Human;Rat;Mouse;
Applications	WB;IHC;IF;ELISA
Gene Name	XCL1/XCL2
Protein Name	Lymphotactin/Cytokine SCM-1 beta
Immunogen	The antiserum was produced against synthesized peptide derived from the Internal region of human XCL1/XCL2. AA range:51-100
Specificity	Lymphotactin Polyclonal Antibody detects endogenous levels of Lymphotactin protein.
Formulation	Liquid in PBS containing 50% glycerol, 0.5% BSA and 0.02% sodium azide.
Source	Polyclonal, Rabbit,IgG
Purification	The antibody was affinity-purified from rabbit antiserum by affinity-chromatography using epitope-specific immunogen.
Dilution	WB: 1/500 - 1/2000. IHC-p: 1/100-1/300. ELISA: 1/20000.. IF 1:50-200
Concentration	1 mg/ml
Purity	≥90%
Storage Stability	-20°C/1 year
Synonyms	XCL1; LTN; SCYC1; Lymphotactin; ATAC; C motif chemokine 1; Cytokine SCM-1; Lymphotaxin; SCM-1-alpha; Small-inducible cytokine C1; XC chemokine ligand 1; XCL2; SCYC2; Cytokine SCM-1 beta; C motif chemokine 2; XC chemokine ligand 2
Observed Band	25kD
Cell Pathway	Secreted.
Tissue Specificity	Highest level in spleen, lower in peripheral leukocytes and very low levels in lung, colon and small intestine.
Function	function:Chemotactic activity for lymphocytes but not for monocytes or neutrophils.,online information:XCL1 entry,similarity:Belongs to the intercrine gamma family.,tissue specificity:Highest level in spleen, lower in peripheral leukocytes and very low levels in lung, colon and small intestine.,
Background	This antimicrobial gene encodes a member of the chemokine superfamily. Chemokines function in inflammatory and immunological responses, inducing

Nanjing BYabscience technology Co.,Ltd



leukocyte migration and activation. The encoded protein is a member of the C-chemokine subfamily, retaining only two of four cysteines conserved in other chemokines, and is thought to be specifically chemotactic for T cells. This gene and a closely related family member are located on the long arm of chromosome 1. [provided by RefSeq, Sep 2014],

matters needing attention

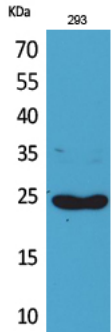
Avoid repeated freezing and thawing!

Usage suggestions

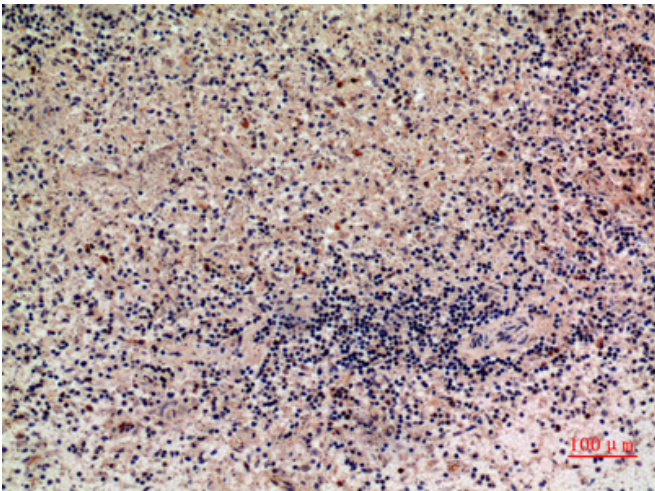
This product can be used in immunological reaction related experiments. For more information, please consult technical personnel.



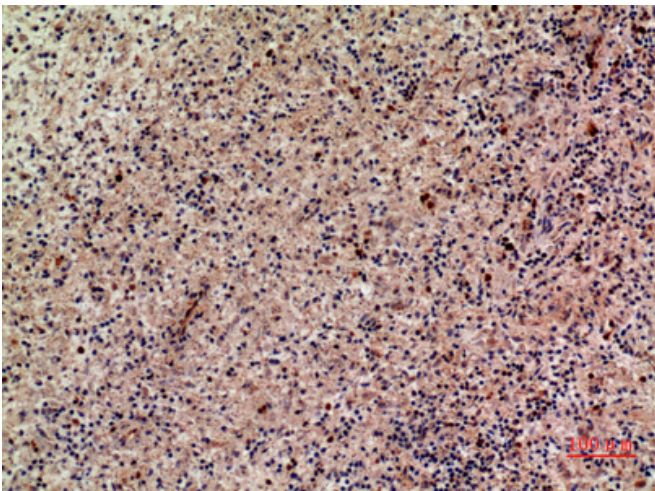
Products Images



Western Blot analysis of 293 cells using Lymphotactin Polyclonal Antibody. Secondary antibody(catalog#:RS0002) was diluted at 1:20000



Immunohistochemical analysis of paraffin-embedded human-liver, antibody was diluted at 1:100



Immunohistochemical analysis of paraffin-embedded human-liver, antibody was diluted at 1:100

Nanjing BYabs science technology Co.,Ltd

网址: www.njbybio.com

官方热线: 025-5229-8998

监督电话: 15950492658