



IL-28 Polyclonal Antibody

Catalog No	BYab-16019
Isotype	IgG
Reactivity	Human;Rat;Mouse;
Applications	WB;IHC;IF;ELISA
Gene Name	IL28A
Protein Name	Interleukin-28A
Immunogen	The antiserum was produced against synthesized peptide derived from the C-terminal region of human IL28A. AA range:131-180
Specificity	IL-28 Polyclonal Antibody detects endogenous levels of IL-28 protein.
Formulation	Liquid in PBS containing 50% glycerol, 0.5% BSA and 0.02% sodium azide.
Source	Polyclonal, Rabbit,IgG
Purification	The antibody was affinity-purified from rabbit antiserum by affinity-chromatography using epitope-specific immunogen.
Dilution	WB: 1/500 - 1/2000. IHC-p: 1/100-1/300. ELISA: 1/20000.. IF 1:50-200
Concentration	1 mg/ml
Purity	≥90%
Storage Stability	-20°C/1 year
Synonyms	IL28A; IFNL2; ZCYTO20; Interleukin-28A; IL-28A; Cytokine Zcyto20; Interferon lambda-2; IFN-lambda-2
Observed Band	25kD
Cell Pathway	Secreted .
Tissue Specificity	Pooled,
Function	caution:It is uncertain whether Met-1 or Met-5 is the initiator.,function:Cytokine with immunomodulatory activity. Up-regulates MHC class I antigen expression. Displays potent antiviral activity. Also displays antitumor activity. Ligand for the heterodimeric class II cytokine receptor composed of IL10RB and IL28RA. The ligand/receptor complex seems to signal through the Jak-STAT pathway.,induction:By viral infections or double stranded RNA.,online information:Interleukin-28 entry,similarity:Belongs to the IL-28/IL-29 family.,
Background	This gene encodes a cytokine distantly related to type I interferons and the IL-10 family. This gene, interleukin 28B (IL28B), and interleukin 29 (IL29) are three closely related cytokine genes that form a cytokine gene cluster on a

Nanjing BYabscience technology Co.,Ltd



chromosomal region mapped to 19q13. Expression of the cytokines encoded by the three genes can be induced by viral infection. All three cytokines have been shown to interact with a heterodimeric class II cytokine receptor that consists of interleukin 10 receptor, beta (IL10RB) and interleukin 28 receptor, alpha (IL28RA). [provided by RefSeq, Jul 2008],

matters needing attention

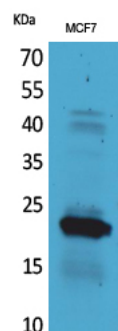
Avoid repeated freezing and thawing!

Usage suggestions

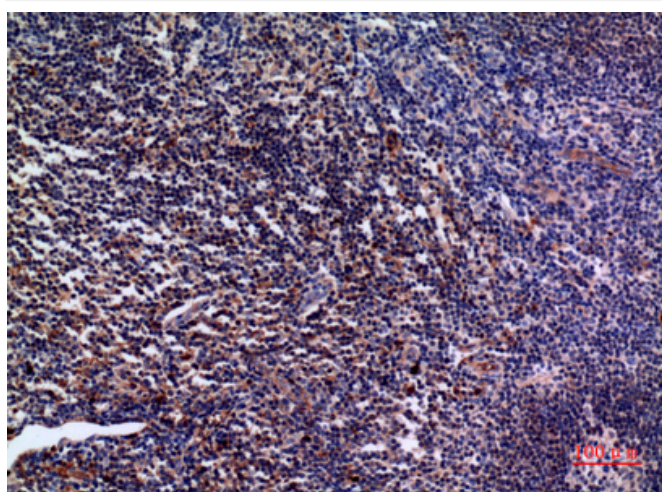
This product can be used in immunological reaction related experiments. For more information, please consult technical personnel.



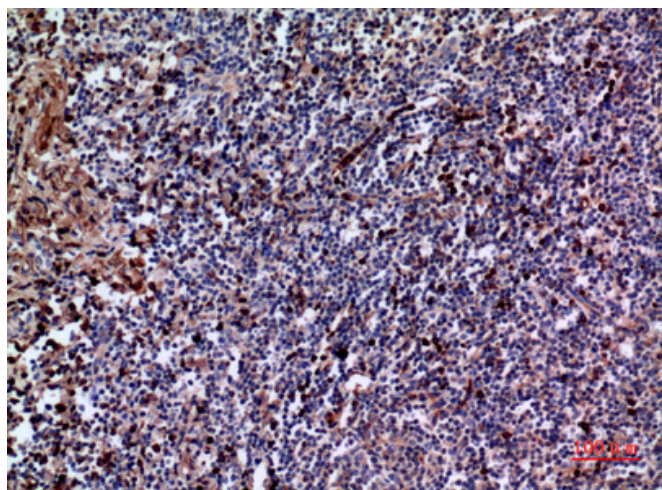
Products Images



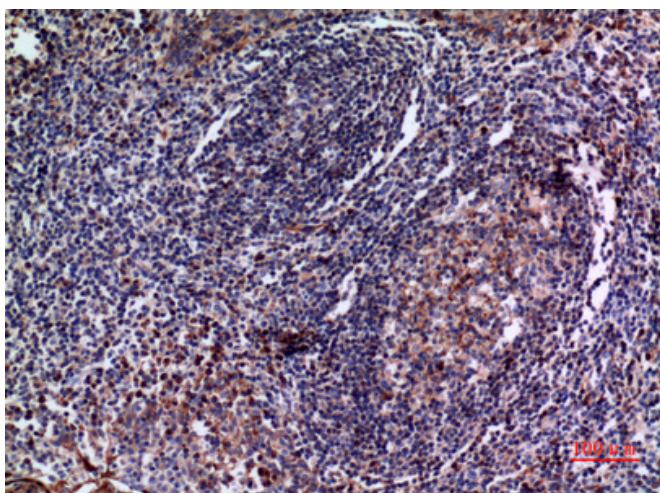
Western Blot analysis of MCF7 cells using IL-28 Polyclonal Antibody. Secondary antibody(catalog#:RS0002) was diluted at 1:20000



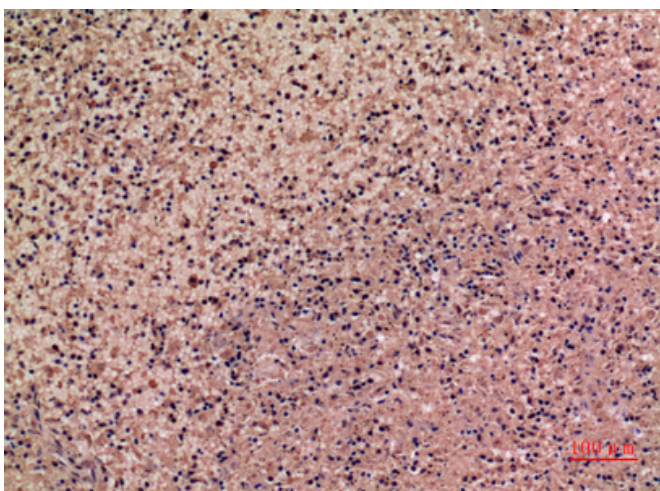
Immunohistochemical analysis of paraffin-embedded human-tonsil, antibody was diluted at 1:100



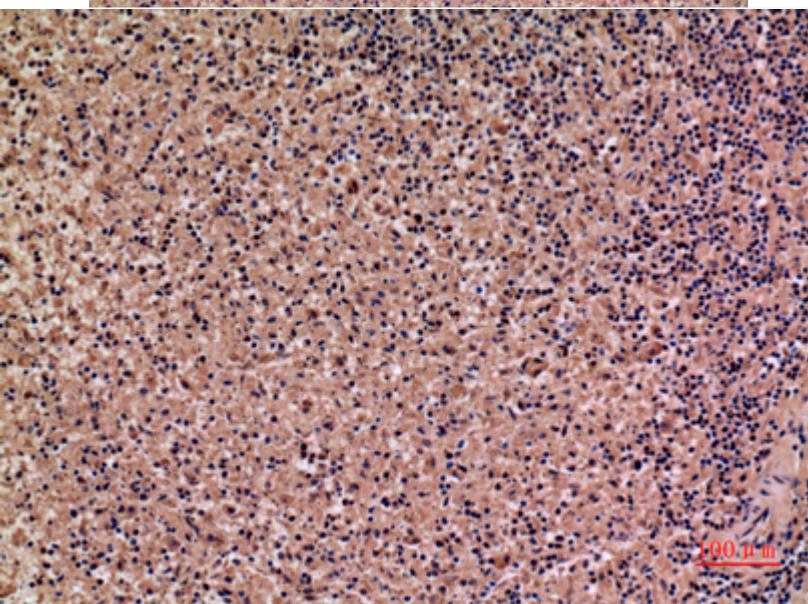
Immunohistochemical analysis of paraffin-embedded human-tonsil, antibody was diluted at 1:100

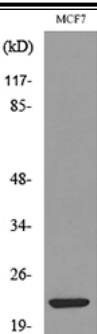


Immunohistochemical analysis of paraffin-embedded human-tonsil, antibody was diluted at 1:100



Immunohistochemical analysis of paraffin-embedded human-spleen, antibody was diluted at 1:100





Nanjing BYabs science technology Co.,Ltd

网址: www.njbybio.com

官方热线: 025-5229-8998

监督电话: 15950492658