



Relaxin 3 Polyclonal Antibody

Catalog No	BYab-15961
Isotype	IgG
Reactivity	Human;Rat;Mouse;
Applications	IHC;IF;ELISA
Gene Name	RLN3
Protein Name	Relaxin-3
Immunogen	Synthesized peptide derived from the Internal region of human Relaxin 3.
Specificity	Relaxin 3 Polyclonal Antibody detects endogenous levels of Relaxin 3 protein.
Formulation	Liquid in PBS containing 50% glycerol, 0.5% BSA and 0.02% sodium azide.
Source	Polyclonal, Rabbit,IgG
Purification	The antibody was affinity-purified from rabbit antiserum by affinity-chromatography using epitope-specific immunogen.
Dilution	IHC: 1/100 - 1/300. ELISA: 1/40000.. IF 1:50-200
Concentration	1 mg/ml
Purity	≥90%
Storage Stability	-20°C/1 year
Synonyms	RLN3; INSL7; RXN3; ZINS4; Relaxin-3; Insulin-like peptide INSL7; Insulin-like peptide 7; Prorelaxin H3
Observed Band	
Cell Pathway	Secreted.
Tissue Specificity	
Function	function:May play a role in neuropeptide signaling processes. Ligand for LGR7, relaxin-3 receptor-1 (GPCR135) and relaxin-3 receptor-2 (GPCR142)..similarity:Belongs to the insulin family..subunit:Heterodimer of a B chain and an A chain linked by two disulfide bonds.,
Background	relaxin 3(RLN3) Homo sapiens This gene encodes a member of the relaxin family of insulin-like hormones that is expressed predominantly in the brain and plays a role in physiological processes such as stress, memory and appetite regulation. The encoded protein is a precursor that is proteolytically processed to generate a heterodimeric mature form consisting A and B chains interlinked by disulfide bonds. Alternative splicing results in multiple transcript variants encoding

Nanjing BYabscience technology Co.,Ltd



different isoforms. [provided by RefSeq, Jul 2015],

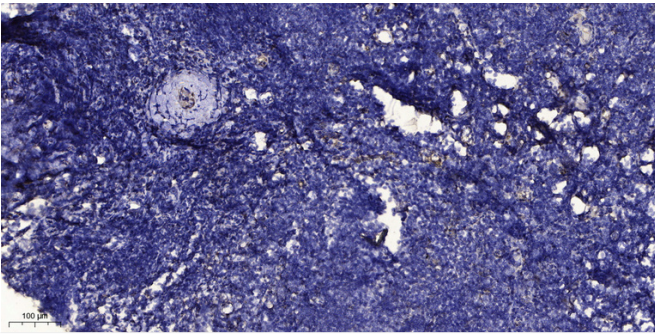
matters needing attention

Avoid repeated freezing and thawing!

Usage suggestions

This product can be used in immunological reaction related experiments. For more information, please consult technical personnel.

Products Images



Immunohistochemical analysis of paraffin-embedded human tonsil. 1, Antibody was diluted at 1:200(4° overnight). 2, Tris-EDTA,pH9.0 was used for antigen retrieval. 3,Secondary antibody was diluted at 1:200(room temperature, 30min).