



Ptx3 Polyclonal Antibody

Catalog No	BYab-15958
Isotype	IgG
Reactivity	Human;Mouse
Applications	WB;IHC;IF;ELISA
Gene Name	PTX3
Protein Name	Pentraxin-related protein PTX3
Immunogen	The antiserum was produced against synthesized peptide derived from human PTX3. AA range:1-50
Specificity	Ptx3 Polyclonal Antibody detects endogenous levels of Ptx3 protein.
Formulation	Liquid in PBS containing 50% glycerol, 0.5% BSA and 0.02% sodium azide.
Source	Polyclonal, Rabbit,IgG
Purification	The antibody was affinity-purified from rabbit antiserum by affinity-chromatography using epitope-specific immunogen.
Dilution	Western Blot: 1/500 - 1/2000. Immunohistochemistry: 1/100 - 1/300. Immunofluorescence: 1/200 - 1/1000. ELISA: 1/10000. Not yet tested in other applications.
Concentration	1 mg/ml
Purity	≥90%
Storage Stability	-20°C/1 year
Synonyms	PTX3; TNFAIP5; TSG14; Pentraxin-related protein PTX3; Pentraxin-related protein PTX3; Tumor necrosis factor alpha-induced protein 5; TNF alpha-induced protein 5; Tumor necrosis factor-inducible gene 14 protein; TSG-14
Observed Band	40kD
Cell Pathway	Secreted.
Tissue Specificity	Brain,Endothelial cell,Foreskin,
Function	function:Plays a role in the regulation of innate resistance to pathogens, inflammatory reactions, possibly clearance of self-components and female fertility.,induction:By interleukin-1 beta and TNF-alpha.,PTM:Glycosylated.,similarity:Contains 1 pentaxin domain.,subunit:Homooctamer; disulfide-linked. Binds to C1q.,
Background	This gene encodes a member of the pentraxin protein family. The expression of this protein is induced by inflammatory cytokines in response to inflammatory

Nanjing BYabscience technology Co.,Ltd



stimuli in several mesenchymal and epithelial cell types, particularly endothelial cells and mononuclear phagocytes. The protein promotes fibrocyte differentiation and is involved in regulating inflammation and complement activation. It also plays a role in angiogenesis and tissue remodeling. The protein serves as a biomarker for several inflammatory conditions. [provided by RefSeq, Jun 2016],

matters needing attention

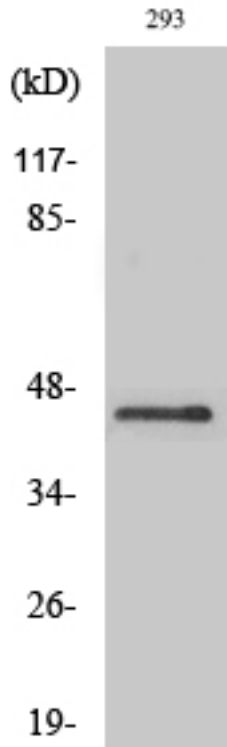
Avoid repeated freezing and thawing!

Usage suggestions

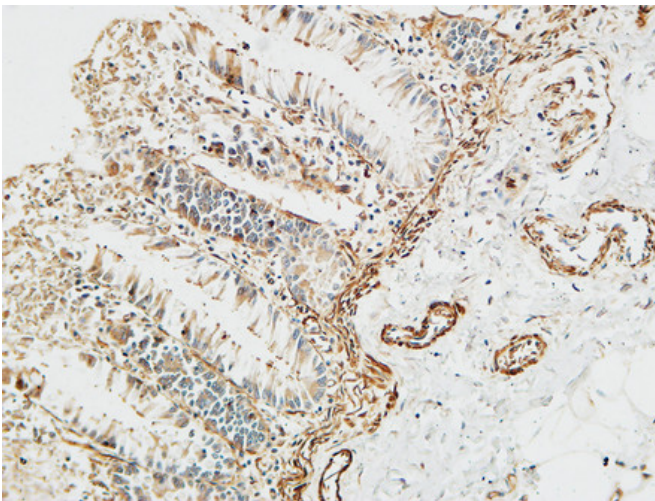
This product can be used in immunological reaction related experiments. For more information, please consult technical personnel.



Products Images



Western Blot analysis of various cells using Ptx3
Polyclonal Antibody diluted at 1:1000



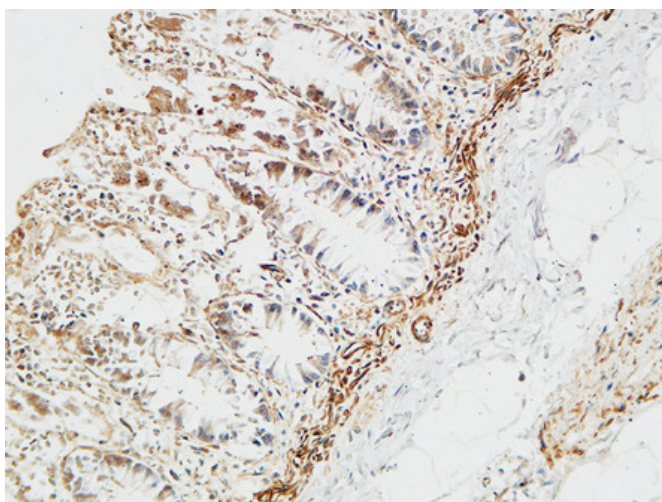
Immunohistochemical analysis of paraffin-embedded Human colon. 1, Antibody was diluted at 1:100(4° overnight). 2, High-pressure and temperature EDTA, pH8.0 was used for antigen retrieval. 3, Secondary antibody was diluted at 1:200(room temperature, 30min).

Nanjing BYabscience technology Co.,Ltd

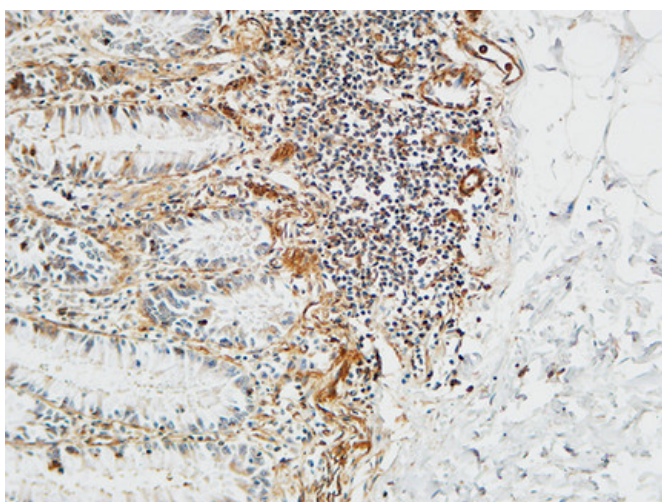
网址: www.njbybio.com

官方热线: 025-5229-8998

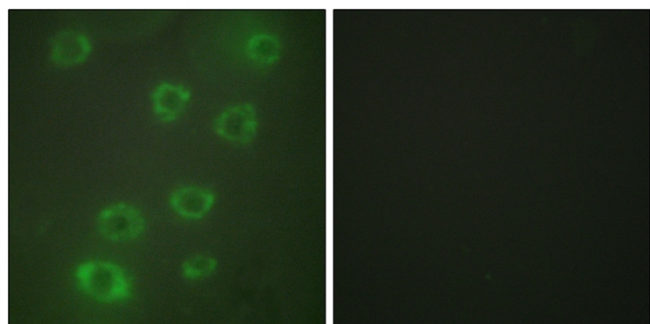
监督电话: 15950492658



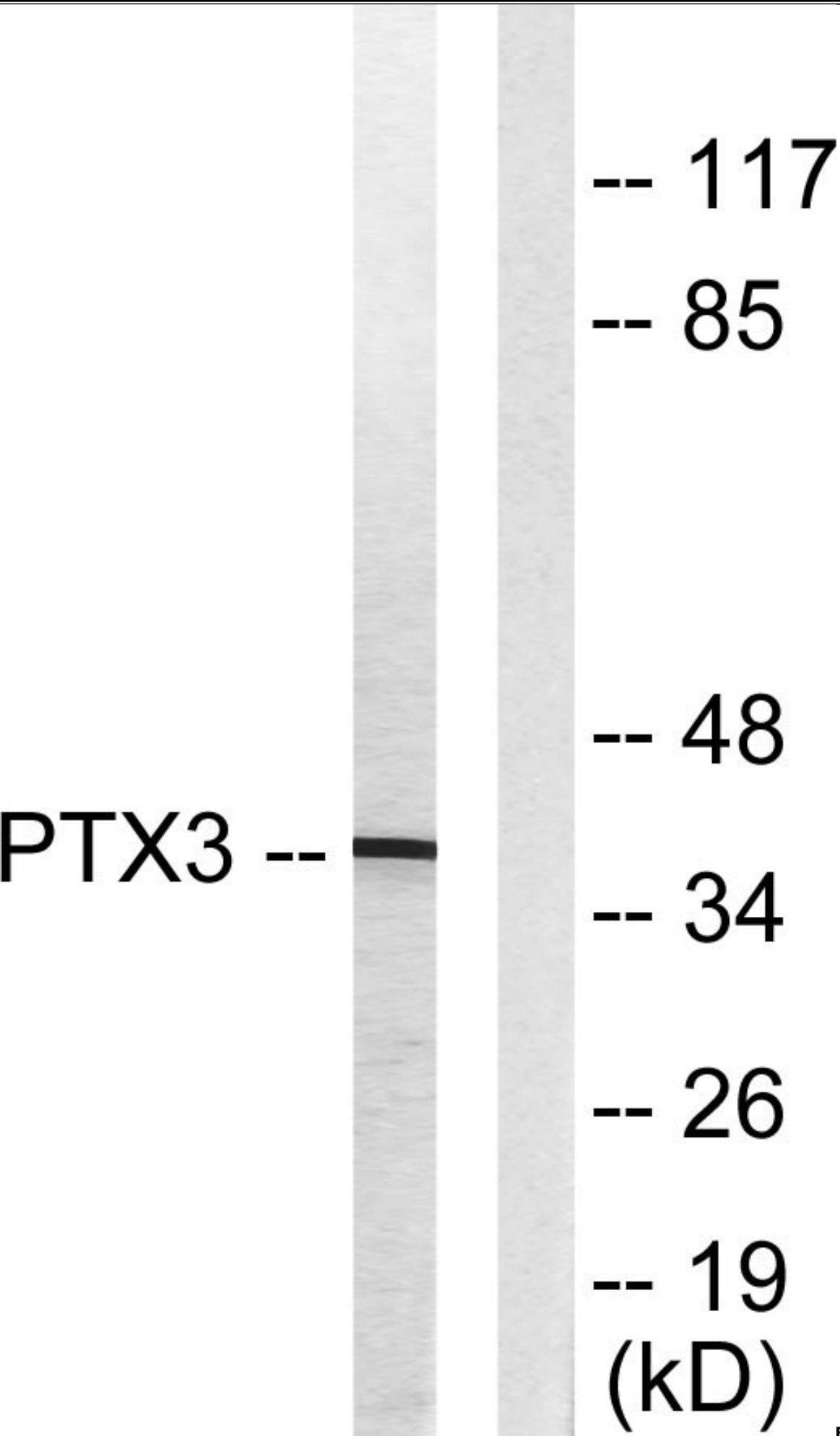
Immunohistochemical analysis of paraffin-embedded Human colon. 1, Antibody was diluted at 1:100(4° overnight). 2, High-pressure and temperature EDTA, pH8.0 was used for antigen retrieval. 3, Secondary antibody was diluted at 1:200(room temperature, 30min).



Immunohistochemical analysis of paraffin-embedded Human colon. 1, Antibody was diluted at 1:100(4° overnight). 2, High-pressure and temperature EDTA, pH8.0 was used for antigen retrieval. 3, Secondary antibody was diluted at 1:200(room temperature, 30min).



Immunofluorescence analysis of HUVEC cells, using PTX3 Antibody. The picture on the right is blocked with the synthesized peptide.





Nanjing BYabscience technology Co.,Ltd

网址: www.njbybio.com

官方热线: 025-5229-8998

监督电话: 15950492658



111 806 821 830 798 832 836 875

PTX3



FGB



PROM1



PTX3 Immunoway, YT3905, 1:2000, 40kD

FGB Immunoway, YT1706, 1:2000, 55kD

PROM1 Immunoway, YT5192, 1:5000, 100kD

PTX3





Nanjing BYabscience technology Co.,Ltd

网址: www.njbybio.com

官方热线: 025-5229-8998

监督电话: 15950492658