



HPLN1 Polyclonal Antibody

Catalog No	BYab-10862
Isotype	IgG
Reactivity	Human; Mouse; Rat
Applications	IHC;IF;WB
Gene Name	HAPLN1 CRTL1
Protein Name	HPLN1
Immunogen	Synthesized peptide derived from human HPLN1
Specificity	This antibody detects endogenous levels of human HPLN1
Formulation	Liquid in PBS containing 50% glycerol, 0.5% BSA and 0.02% sodium azide.
Source	Polyclonal, Rabbit,IgG
Purification	The antibody was affinity-purified from rabbit serum by affinity-chromatography using specific immunogen.
Dilution	IHC-p 1:50-200, WB 1:500-2000. IF 1:50-200
Concentration	1 mg/ml
Purity	≥90%
Storage Stability	-20°C/1 year
Synonyms	Hyaluronan and proteoglycan link protein 1 (Cartilage-linking protein 1;Cartilage-link protein;Proteoglycan link protein)
Observed Band	38kD
Cell Pathway	Secreted, extracellular space, extracellular matrix.
Tissue Specificity	Widely expressed. Weakly expressed in the brain.
Function	function:Stabilizes the aggregates of proteoglycan monomers with hyaluronic acid in the extracellular cartilage matrix.,similarity:Belongs to the HAPLN family.,similarity:Contains 1 Ig-like V-type (immunoglobulin-like) domain.,similarity:Contains 2 Link domains.,tissue specificity:Widely expressed. Weakly expressed in the brain.,
Background	function:Stabilizes the aggregates of proteoglycan monomers with hyaluronic acid in the extracellular cartilage matrix.,similarity:Belongs to the HAPLN family.,similarity:Contains 1 Ig-like V-type (immunoglobulin-like) domain.,similarity:Contains 2 Link domains.,tissue specificity:Widely expressed. Weakly expressed in the brain.,

Nanjing BYabscience technology Co.,Ltd



matters needing attention

Avoid repeated freezing and thawing!

Usage suggestions

This product can be used in immunological reaction related experiments. For more information, please consult technical personnel.

Nanjing BYabscience technology Co.,Ltd

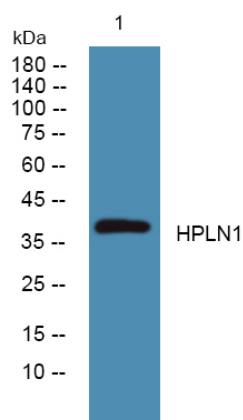
网址: www.njbybio.com

官方热线: 025-5229-8998

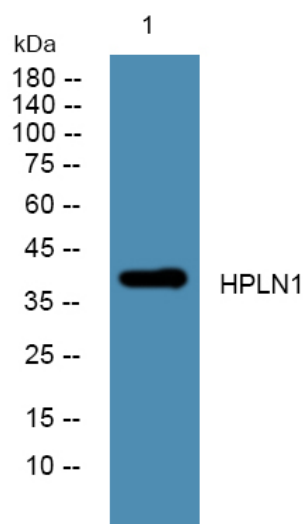
监督电话: 15950492658



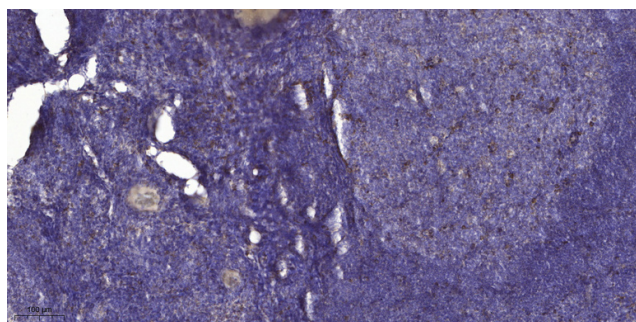
Products Images



Western blot analysis of lysates from SH-SY5Y cells, primary antibody was diluted at 1:1000, 4° over night



Western blot analysis of lysates from HCT116 cells, primary antibody was diluted at 1:1000, 4° over night



Immunohistochemical analysis of paraffin-embedded human tonsil. 1, Antibody was diluted at 1:200 (4° overnight). 2, Tris-EDTA, pH 9.0 was used for antigen retrieval. 3, Secondary antibody was diluted at 1:200 (room temperature, 30 min).