



# GP-39 Polyclonal Antibody

<b>Catalog No</b>	BYab-10860
<b>Isotype</b>	IgG
<b>Reactivity</b>	Human;Rat;Mouse;
<b>Applications</b>	IHC;IF;WB
<b>Gene Name</b>	CHI3L1
<b>Protein Name</b>	GP-39
<b>Immunogen</b>	Synthesized peptide derived from human GP-39
<b>Specificity</b>	This antibody detects endogenous levels of human GP-39
<b>Formulation</b>	Liquid in PBS containing 50% glycerol, 0.5% BSA and 0.02% sodium azide.
<b>Source</b>	Polyclonal, Rabbit,IgG
<b>Purification</b>	The antibody was affinity-purified from rabbit serum by affinity-chromatography using specific immunogen.
<b>Dilution</b>	IHC-p 1:50-200, WB 1:500-2000. IF 1:50-200
<b>Concentration</b>	1 mg/ml
<b>Purity</b>	≥90%
<b>Storage Stability</b>	-20°C/1 year
<b>Synonyms</b>	Chitinase-3-like protein 1 (39 kDa synovial protein;Cartilage glycoprotein 39;CGP-39;GP-39;hCGP-39;YKL-40)
<b>Observed Band</b>	42kD
<b>Cell Pathway</b>	Secreted, extracellular space . Cytoplasm . Cytoplasm, perinuclear region . Endoplasmic reticulum .
<b>Tissue Specificity</b>	Present in activated macrophages, articular chondrocytes, synovial cells as well as in liver. Very low or undetectable expression in non-inflammatory colon. Undetectable in muscle tissues, lung, pancreas, mononuclear cells, or fibroblasts.
<b>Function</b>	disease:A genetic variation in CHI3L1 is associated with susceptibility to asthma-related traits type 7 (ASRT7) [MIM:611960]. Asthma-related traits include clinical symptoms of asthma, such as coughing, wheezing and dyspnea, bronchial hyperresponsiveness (BHR) as assessed by methacholine challenge test, serum IgE levels, atopy, and atopic dermatitis.,function:Carbohydrate-binding lectin with a preference for chitin. May play a role in defense against pathogens, or in tissue remodeling. May play an important role in the capacity of cells to respond to and cope with changes in their environment.,PTM:Glycosylated.,similarity:Belongs to the glycosyl hydrolase 18 family.,subunit:Monomer.,tissue specificity:Present in activated macrophages, articular chondrocytes, synovial cells as well as in liver.

**Nanjing BYabscience technology Co.,Ltd**



Undetectable in muscle tissues, lung, pancreas, mononuclear cells, or fibroblasts.,

**Background**

Chitinases catalyze the hydrolysis of chitin, which is an abundant glycopolymer found in insect exoskeletons and fungal cell walls. The glycoside hydrolase 18 family of chitinases includes eight human family members. This gene encodes a glycoprotein member of the glycosyl hydrolase 18 family. The protein lacks chitinase activity and is secreted by activated macrophages, chondrocytes, neutrophils and synovial cells. The protein is thought to play a role in the process of inflammation and tissue remodeling. [provided by RefSeq, Sep 2009],

**matters needing attention**

Avoid repeated freezing and thawing!

**Usage suggestions**

This product can be used in immunological reaction related experiments. For more information, please consult technical personnel.

Nanjing BYabscience technology Co.,Ltd

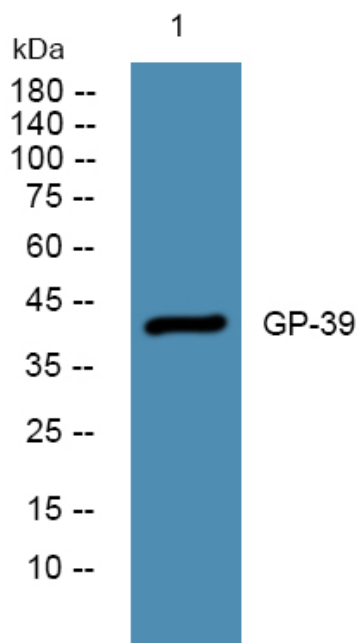
网址: [www.njbybio.com](http://www.njbybio.com)

官方热线: 025-5229-8998

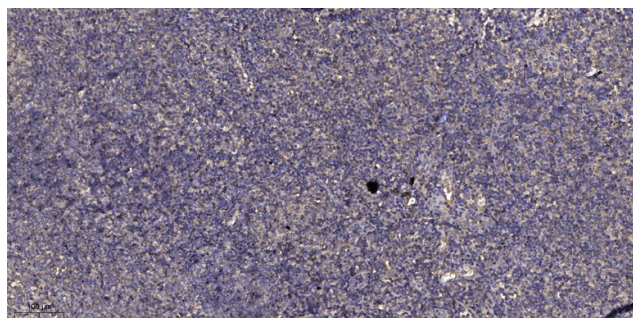
监督电话: 15950492658



## Products Images



Western blot analysis of lysates from Jarkat cells, primary antibody was diluted at 1:1000, 4° over night



Immunohistochemical analysis of paraffin-embedded human tonsil. 1, Antibody was diluted at 1:200(4° overnight). 2, Tris-EDTA, pH9.0 was used for antigen retrieval. 3, Secondary antibody was diluted at 1:200(room temperature, 30min).