



SC6A4 Polyclonal Antibody

Catalog No	BYab-10832
Isotype	IgG
Reactivity	Human; Mouse; Rat
Applications	WB;IHC;IF;ELISA
Gene Name	SLC6A4 HTT SERT
Protein Name	SC6A4
Immunogen	Synthesized peptide derived from human SC6A4
Specificity	This antibody detects endogenous levels of human SC6A4
Formulation	Liquid in PBS containing 50% glycerol, 0.5% BSA and 0.02% sodium azide.
Source	Polyclonal, Rabbit,IgG
Purification	The antibody was affinity-purified from rabbit serum by affinity-chromatography using specific immunogen.
Dilution	Western Blot: 1/500 - 1/2000. Immunohistochemistry: 1/100 - 1/300. Immunofluorescence: 1/200 - 1/1000. ELISA: 1/40000. Not yet tested in other applications.
Concentration	1 mg/ml
Purity	≥90%
Storage Stability	-20°C/1 year
Synonyms	Sodium-dependent serotonin transporter (5HT transporter;5HTT;Solute carrier family 6 member 4)
Observed Band	69kD
Cell Pathway	Cell membrane ; Multi-pass membrane protein . Endomembrane system ; Multi-pass membrane protein . Endosome membrane ; Multi-pass membrane protein . Cell junction, synapse . Cell junction, focal adhesion . Could be part of recycling endosomes (PubMed:16870614). Density of transporter molecules on the plasma membrane is itself regulated by STX1A (By similarity). Density of transporter molecules on the plasma membrane is also regulated by serotonin (PubMed:17506858). Density of transporter molecules seems to be modulated by ITGAV:ITGB3 (By similarity). .
Tissue Specificity	Expressed in platelets (at protein level).
Function	function:Terminates the action of serotonin by its high affinity sodium-dependent reuptake into presynaptic terminals.,miscellaneous:This protein is the target of psychomotor stimulants such as amphetamines or cocaine.,online information:Serotonin transporter entry,online information:The Singapore human

Nanjing BYabscience technology Co.,Ltd



mutation and polymorphism database, polymorphism: A polymorphism in the promoter region (5-HTT gene-linked polymorphic region, 5-HTTLPR) is located approximately 1 kb upstream of the transcription initiation site and is composed of 16 repeat elements. The polymorphism consists of a 44-bp insertion or deletion involving repeat elements 6 to 8. The short allele is associated with lower transcriptional efficiency of the promoter compared with the long allele. Over half of the Caucasian population has a short allele. Individuals with one or two copies of the short allele exhibit more depressive

Background

This gene encodes an integral membrane protein that transports the neurotransmitter serotonin from synaptic spaces into presynaptic neurons. The encoded protein terminates the action of serotonin and recycles it in a sodium-dependent manner. This protein is a target of psychomotor stimulants, such as amphetamines and cocaine, and is a member of the sodium:neurotransmitter symporter family. A repeat length polymorphism in the promoter of this gene has been shown to affect the rate of serotonin uptake and may play a role in sudden infant death syndrome, aggressive behavior in Alzheimer disease patients, and depression-susceptibility in people experiencing emotional trauma. [provided by RefSeq, Jul 2008],

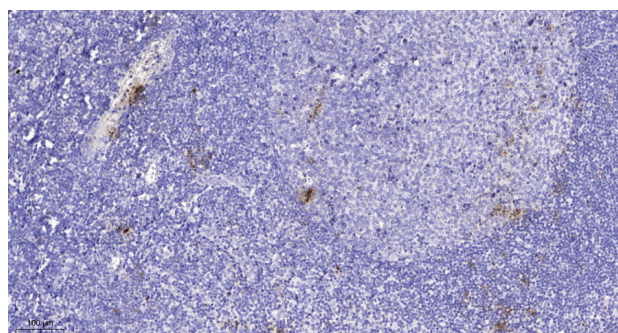
matters needing attention

Avoid repeated freezing and thawing!

Usage suggestions

This product can be used in immunological reaction related experiments. For more information, please consult technical personnel.

Products Images



Immunohistochemical analysis of paraffin-embedded human tonsil. 1, Antibody was diluted at 1:200(4° overnight). 2, Tris-EDTA, pH9.0 was used for antigen retrieval. 3, Secondary antibody was diluted at 1:200(room temperature, 45min).