



AGTR1 Polyclonal Antibody

Catalog No	BYab-10820
Isotype	IgG
Reactivity	Human;Mouse;Rat
Applications	WB;ELISA
Gene Name	AGTR1 AGTR1A AGTR1B AT2R1 AT2R1B
Protein Name	Type-1 angiotensin II receptor (AT1AR) (AT1BR) (Angiotensin II type-1 receptor) (AT1)
Immunogen	Synthesized peptide derived from human AGTR1 Polyclonal
Specificity	This antibody detects endogenous levels of AGTR1.
Formulation	Liquid in PBS containing 50% glycerol, 0.5% BSA and 0.02% sodium azide.
Source	Polyclonal, Rabbit,IgG
Purification	The antibody was affinity-purified from rabbit antiserum by affinity-chromatography using epitope-specific immunogen.
Dilution	WB 1:500-2000, ELISA 1:10000-20000
Concentration	1 mg/ml
Purity	≥90%
Storage Stability	-20°C/1 year
Synonyms	Type-1 angiotensin II receptor (AT1AR) (AT1BR) (Angiotensin II type-1 receptor) (AT1)
Observed Band	41kD
Cell Pathway	Cell membrane ; Multi-pass membrane protein .
Tissue Specificity	Liver, lung, adrenal and adrenocortical adenomas.
Function	disease:Defects in AGTR1 are a cause of renal tubular dysgenesis (RTD) [MIM:267430]. RTD is an autosomal recessive severe disorder of renal tubular development characterized by persistent fetal anuria and perinatal death, probably due to pulmonary hypoplasia from early-onset oligohydramnios (the Potter phenotype).,function:Receptor for angiotensin II. Mediates its action by association with G proteins that activate a phosphatidylinositol-calcium second messenger system.,online information:Angiotensin receptor entry,online information:The Singapore human mutation and polymorphism database,PTM:C-terminal Ser or Thr residues may be phosphorylated.,similarity:Belongs to the G-protein coupled receptor 1 family.,tissue specificity:Liver, lung, adrenal and adrenocortical adenomas.,

Nanjing BYabscience technology Co.,Ltd



Background

Angiotensin II is a potent vasopressor hormone and a primary regulator of aldosterone secretion. It is an important effector controlling blood pressure and volume in the cardiovascular system. It acts through at least two types of receptors. This gene encodes the type 1 receptor which is thought to mediate the major cardiovascular effects of angiotensin II. This gene may play a role in the generation of reperfusion arrhythmias following restoration of blood flow to ischemic or infarcted myocardium. It was previously thought that a related gene, denoted as AGTR1B, existed; however, it is now believed that there is only one type 1 receptor gene in humans. Multiple alternatively spliced transcript variants have been reported for this gene. [provided by RefSeq, Jul 2012],

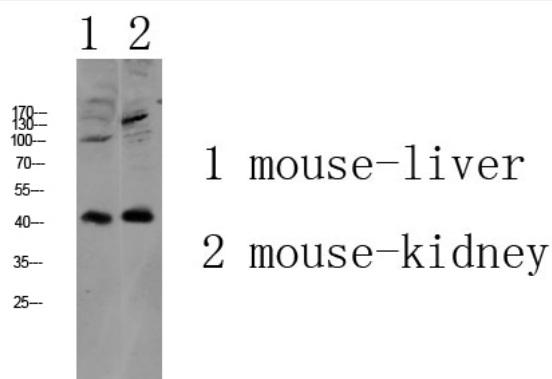
matters needing attention

Avoid repeated freezing and thawing!

Usage suggestions

This product can be used in immunological reaction related experiments. For more information, please consult technical personnel.

Products Images



Western blot analysis of various lysate, antibody was diluted at 1000. Secondary antibody(catalog#:RS0002) was diluted at 1:20000