



NMUR2 Polyclonal Antibody

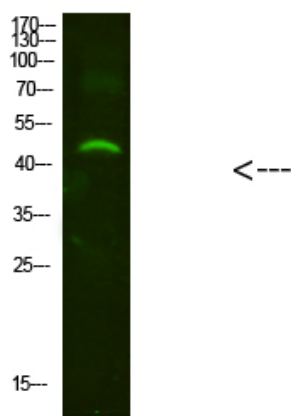
Catalog No	BYab-10780
Isotype	IgG
Reactivity	Human;Rat;Mouse;
Applications	WB;ELISA
Gene Name	NMUR2
Protein Name	NMUR2
Immunogen	Synthesized peptide derived from human NMUR2. at AA range: 1-50
Specificity	NMUR2 Polyclonal Antibody detects endogenous levels of NMUR2
Formulation	Liquid in PBS containing 50% glycerol, 0.5% BSA and 0.02% sodium azide.
Source	Polyclonal, Rabbit,IgG
Purification	The antibody was affinity-purified from rabbit antiserum by affinity-chromatography using epitope-specific immunogen.
Dilution	WB 1:500-2000, ELISA 1:10000-20000
Concentration	1 mg/ml
Purity	≥90%
Storage Stability	-20°C/1 year
Synonyms	Neuromedin-U receptor 2 (NMU-R2) (G-protein coupled receptor FM-4) (G-protein coupled receptor TGR-1)
Observed Band	46kD
Cell Pathway	Cell membrane; Multi-pass membrane protein.
Tissue Specificity	Predominantly expressed in the CNS, particularly in the medulla oblongata, pontine reticular formation, spinal cord, and thalamus. High level in testis whereas lower levels are present in a variety of peripheral tissues including the gastrointestinal tract, genitourinary tract, liver, pancreas, adrenal gland, thyroid gland, lung, trachea, spleen and thymus.
Function	caution:It is uncertain whether Met-1 or Met-4 is the initiator.,function:Receptor for the neuromedin-U and neuromedin-S neuropeptides.,similarity:Belongs to the G-protein coupled receptor 1 family.,tissue specificity:Predominantly expressed in the CNS, particularly in the medulla oblongata, pontine reticular formation, spinal cord, and thalamus. High level in testis whereas lower levels are present in a variety of peripheral tissues including the gastrointestinal tract, genitourinary tract, liver, pancreas, adrenal gland, thyroid gland, lung, trachea, spleen and thymus.,

Nanjing BYabscience technology Co.,Ltd



Background	This gene encodes a protein from the G-protein coupled receptor 1 family. This protein is a receptor for neuromedin U, which is a neuropeptide that is widely distributed in the gut and central nervous system. This receptor plays an important role in the regulation of food intake and body weight. [provided by RefSeq, Jul 2008],
matters needing attention	Avoid repeated freezing and thawing!
Usage suggestions	This product can be used in immunological reaction related experiments. For more information, please consult technical personnel.

Products Images



Western Blot analysis of mouse-brain cells using primary antibody diluted at 1:2000 (4°C overnight). Secondary antibody: Goat Anti-rabbit IgG IRDye 800 (diluted at 1:5000, 25°C, 1 hour)