



# Epiregulin Polyclonal Antibody

<b>Catalog No</b>	BYab-10745
<b>Isotype</b>	IgG
<b>Reactivity</b>	Human;Mouse;Rat
<b>Applications</b>	IHC;IF;ELISA
<b>Gene Name</b>	EREG
<b>Protein Name</b>	Proepiregulin [Cleaved into: Epiregulin (EPR)]
<b>Immunogen</b>	Synthetic peptide from human protein at AA range: 71-120
<b>Specificity</b>	The antibody detects endogenous Epiregulin
<b>Formulation</b>	Liquid in PBS containing 50% glycerol, 0.5% BSA and 0.02% sodium azide.
<b>Source</b>	Polyclonal, Rabbit,IgG
<b>Purification</b>	The antibody was affinity-purified from rabbit antiserum by affinity-chromatography using epitope-specific immunogen.
<b>Dilution</b>	IHC-p 1:50-200, ELISA 1:10000-20000. IF 1:50-200
<b>Concentration</b>	1 mg/ml
<b>Purity</b>	≥90%
<b>Storage Stability</b>	-20°C/1 year
<b>Synonyms</b>	Proepiregulin [Cleaved into: Epiregulin (EPR)]
<b>Observed Band</b>	
<b>Cell Pathway</b>	[Epiregulin]: Secreted, extracellular space .; [Proepiregulin]: Cell membrane ; Single-pass type I membrane protein .
<b>Tissue Specificity</b>	In normal adults, expressed predominantly in the placenta and peripheral blood leukocytes. High levels were detected in carcinomas of the bladder, lung, kidney and colon.
<b>Function</b>	function:May be a mediator of localized cell proliferation. As a mitogen it may stimulate cell proliferation and/or angiogenesis.,similarity:Contains 1 EGF-like domain.,tissue specificity:In normal adults, expressed predominantly in the placenta and peripheral blood leukocytes. High levels were detected in carcinomas of the bladder, lung, kidney and colon.,
<b>Background</b>	This gene encodes a secreted peptide hormone and member of the epidermal growth factor (EGF) family of proteins. The encoded protein is a ligand of the epidermal growth factor receptor (EGFR) and the structurally related erb-b2 receptor tyrosine kinase 4 (ERBB4). The encoded protein may be involved in a wide range of biological processes including inflammation, wound healing, oocyte

**Nanjing BYabscience technology Co.,Ltd**



maturation, and cell proliferation. Additionally, the encoded protein may promote the progression of cancers of various human tissues. [provided by RefSeq, Jul 2015],

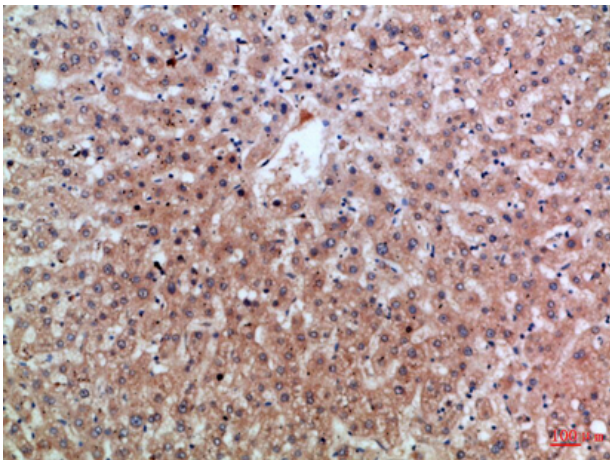
**matters needing attention**

Avoid repeated freezing and thawing!

**Usage suggestions**

This product can be used in immunological reaction related experiments. For more information, please consult technical personnel.

## Products Images



Immunohistochemical analysis of paraffin-embedded Human-liver, antibody was diluted at 1:100