



ATG10 Polyclonal Antibody

| | |
|--------------------|--|
| Catalog No | BYab-10725 |
| Isotype | IgG |
| Reactivity | Human;Rat;Mouse; |
| Applications | IHC;IF;ELISA |
| Gene Name | ATG10 APG10L PP12616 |
| Protein Name | Ubiquitin-like-conjugating enzyme ATG10 (EC 6.3.2.-) (Autophagy-related protein 10) (APG10-like) |
| Immunogen | Synthetic peptide from human protein at AA range: 1-50 |
| Specificity | The antibody detects endogenous ATG10 |
| Formulation | Liquid in PBS containing 50% glycerol, 0.5% BSA and 0.02% sodium azide. |
| Source | Polyclonal, Rabbit,IgG |
| Purification | The antibody was affinity-purified from rabbit antiserum by affinity-chromatography using epitope-specific immunogen. |
| Dilution | IHC-p 1:50-200, ELISA 1:10000-20000. IF 1:50-200 |
| Concentration | 1 mg/ml |
| Purity | ≥90% |
| Storage Stability | -20°C/1 year |
| Synonyms | Ubiquitin-like-conjugating enzyme ATG10 (EC 6.3.2.-;Autophagy-related protein 10;APG10-like) |
| Observed Band | |
| Cell Pathway | Cytoplasm . |
| Tissue Specificity | Placenta,Testis,Thymus,Uterus, |
| Function | function:Plays a role in autophagy (By similarity). ATG12-conjugating enzyme (E2-like enzyme), likely serves as an ATG5-recognition molecule.,similarity:Belongs to the ATG10 family.,subunit:Interacts with MAP1LC3A. By interacting with MAP1LC3A, it plays a role in the conjugation of ATG12 to ATG5. Also able to directly interact either with ATG5 or ATG7., |
| Background | Autophagy is a process for the bulk degradation of cytosolic compartments by lysosomes. ATG10 is an E2-like enzyme involved in 2 ubiquitin-like modifications essential for autophagosome formation: ATG12 (MIM 609608)-ATG5 (MIM 604261) conjugation and modification of a soluble form of MAP-LC3 (MAP1LC3A; MIM 601242), a homolog of yeast Apg8, to a membrane-bound form (Nemoto et |

Nanjing BYabscience technology Co.,Ltd



al., 2003 [PubMed 12890687]).[supplied by OMIM, Mar 2008],

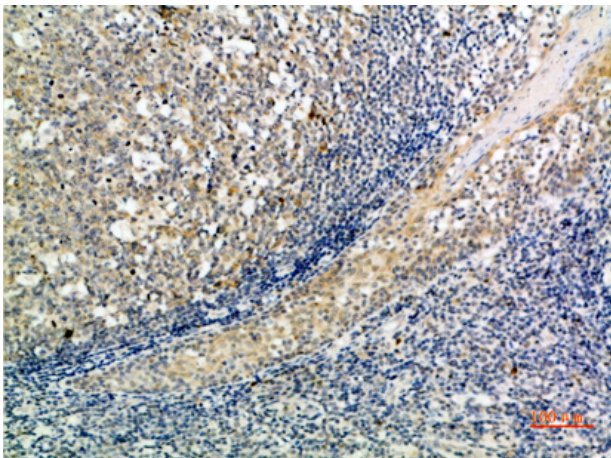
matters needing attention

Avoid repeated freezing and thawing!

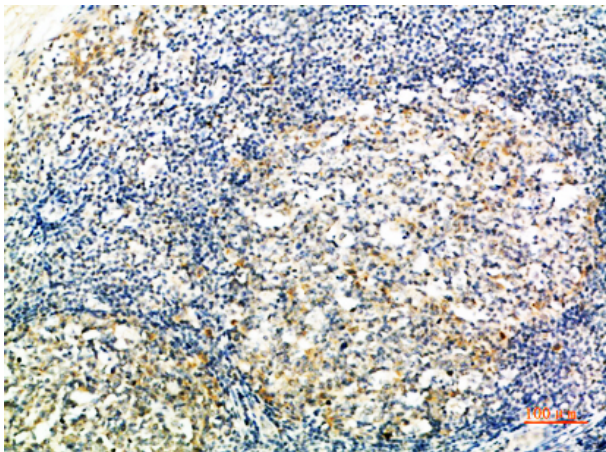
Usage suggestions

This product can be used in immunological reaction related experiments. For more information, please consult technical personnel.

Products Images



Immunohistochemical analysis of paraffin-embedded human-tonsil, antibody was diluted at 1:200



Immunohistochemical analysis of paraffin-embedded human-tonsil, antibody was diluted at 1:200

Nanjing BYabscience technology Co.,Ltd

网址: www.njbybio.com

官方热线: 025-5229-8998

监督电话: 15950492658