



ST2 Polyclonal Antibody

Catalog No	BYab-10716
Isotype	IgG
Reactivity	Human;Rat;Mouse;
Applications	WB;IHC;IF;ELISA
Gene Name	IL1RL1 DER4 ST2 T1
Protein Name	Interleukin-1 receptor-like 1 (Protein ST2)
Immunogen	Synthetic peptide from human protein at AA range: 251-300
Specificity	The antibody detects endogenous ST2
Formulation	Liquid in PBS containing 50% glycerol, 0.5% BSA and 0.02% sodium azide.
Source	Polyclonal, Rabbit,IgG
Purification	The antibody was affinity-purified from rabbit antiserum by affinity-chromatography using epitope-specific immunogen.
Dilution	Western Blot: 1/500 - 1/2000. Immunohistochemistry: 1/100 - 1/300. Immunofluorescence: 1/200 - 1/1000. ELISA: 1/20000. Not yet tested in other applications.
Concentration	1 mg/ml
Purity	≥90%
Storage Stability	-20°C/1 year
Synonyms	Interleukin-1 receptor-like 1 (Protein ST2)
Observed Band	
Cell Pathway	[Isoform C]: Cell membrane.; [Isoform B]: Secreted.; Cell membrane ; Single-pass type I membrane protein .
Tissue Specificity	Highly expressed in kidney, lung, placenta, stomach, skeletal muscle, colon and small intestine. Isoform A is prevalently expressed in the lung, testis, placenta, stomach and colon. Isoform B is more abundant in the brain, kidney and the liver. Isoform C is not detected in brain, heart, liver, kidney and skeletal muscle. Expressed on T-cells in fibrotic liver; at protein level. Overexpressed in fibrotic and cirrhotic liver.
Function	function:Receptor for interleukin-33 (IL-33), its stimulation recruits MYD88, IRAK1, IRAK4, and TRAF6, followed by phosphorylation of MAPK3/ERK1 and/or MAPK1/ERK2, MAPK14, and MAPK8. Possibly involved in helper T-cell function..similarity:Belongs to the interleukin-1 receptor family..similarity:Contains 1 TIR domain..similarity:Contains 3 Ig-like C2-type (immunoglobulin-like) domains..subunit:Interacts with MYD88, IRAK1, IRAK4, and TRAF6..tissue

Nanjing BYabs science technology Co.,Ltd



specificity:Highly expressed in kidney, lung, placenta, stomach, skeletal muscle, colon and small intestine. Expression of isoform A is prevalent in the lung, testis, placenta, stomach and colon. However, isoform B is more abundant in the brain, kidney and the liver. Isoform C is not detected in brain, heart, liver, kidney and skeletal muscle.,

Background

The protein encoded by this gene is a member of the interleukin 1 receptor family. Studies of the similar gene in mouse suggested that this receptor can be induced by proinflammatory stimuli, and may be involved in the function of helper T cells. This gene, interleukin 1 receptor, type I (IL1R1), interleukin 1 receptor, type II (IL1R2) and interleukin 1 receptor-like 2 (IL1RL2) form a cytokine receptor gene cluster in a region mapped to chromosome 2q12. Alternative splicing of this gene results in multiple transcript variants. [provided by RefSeq, Jul 2008],

matters needing attention

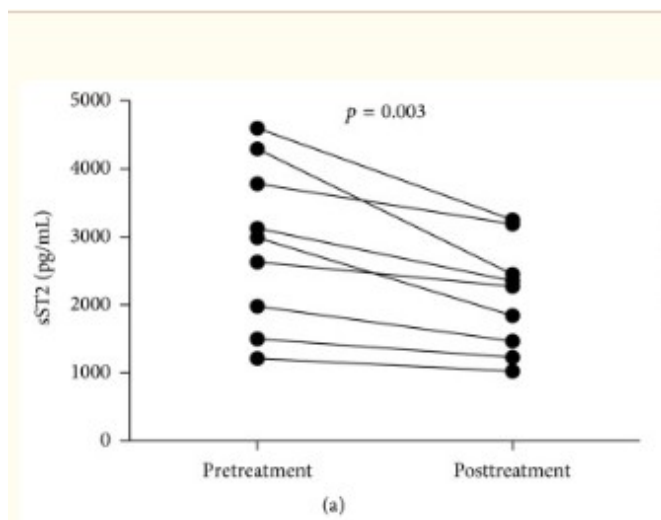
Avoid repeated freezing and thawing!

Usage suggestions

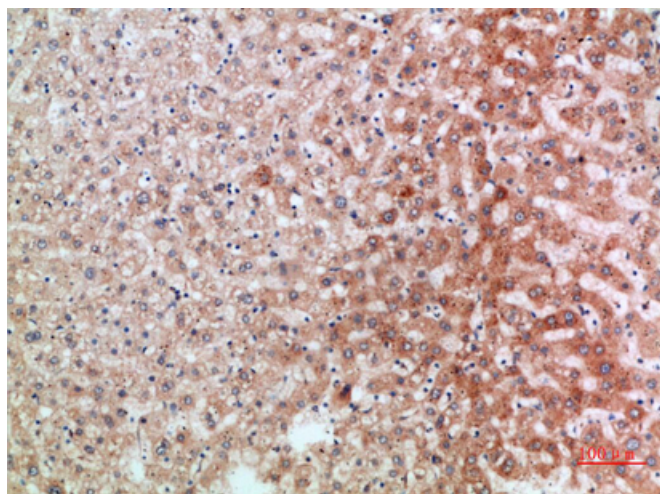
This product can be used in immunological reaction related experiments. For more information, please consult technical personnel.



Products Images



Zhang, Zhihui, et al. "Serum levels of soluble ST2 and IL-10 are associated with disease severity in patients with IgA nephropathy." *Journal of immunology research* 2016 (2016).



Immunohistochemical analysis of paraffin-embedded human-liver, antibody was diluted at 1:200