



# CDNF Polyclonal Antibody

<b>Catalog No</b>	BYab-10697
<b>Isotype</b>	IgG
<b>Reactivity</b>	Human;Rat;Mouse;
<b>Applications</b>	IHC;IF;ELISA
<b>Gene Name</b>	CDNF ARMETL1
<b>Protein Name</b>	Cerebral dopamine neurotrophic factor (ARMET-like protein 1) (Conserved dopamine neurotrophic factor)
<b>Immunogen</b>	Synthetic peptide from human protein at AA range: 31-80
<b>Specificity</b>	The antibody detects endogenous CDNF
<b>Formulation</b>	Liquid in PBS containing 50% glycerol, 0.5% BSA and 0.02% sodium azide.
<b>Source</b>	Polyclonal, Rabbit,IgG
<b>Purification</b>	The antibody was affinity-purified from rabbit antiserum by affinity-chromatography using epitope-specific immunogen.
<b>Dilution</b>	IHC-p 1:50-200, ELISA 1:10000-20000. IF 1:50-200
<b>Concentration</b>	1 mg/ml
<b>Purity</b>	≥90%
<b>Storage Stability</b>	-20°C/1 year
<b>Synonyms</b>	Cerebral dopamine neurotrophic factor (ARMET-like protein 1;Conserved dopamine neurotrophic factor)
<b>Observed Band</b>	
<b>Cell Pathway</b>	Secreted .
<b>Tissue Specificity</b>	Widely expressed in neuronal and non-neuronal tissues. In the brain, highest levels in the optic nerve and corpus callosum.
<b>Function</b>	
<b>Background</b>	CDNF (Cerebral Dopamine Neurotrophic Factor) is a Protein Coding gene. Trophic factor for dopamine neurons. Prevents the 6-hydroxydopamine (6-OHDA)-induced degeneration of dopaminergic neurons. When administered after 6-OHDA-lesioning, restores the dopaminergic function and prevents the degeneration of dopaminergic neurons in substantia nigra (By similarity).
<b>matters needing attention</b>	Avoid repeated freezing and thawing!

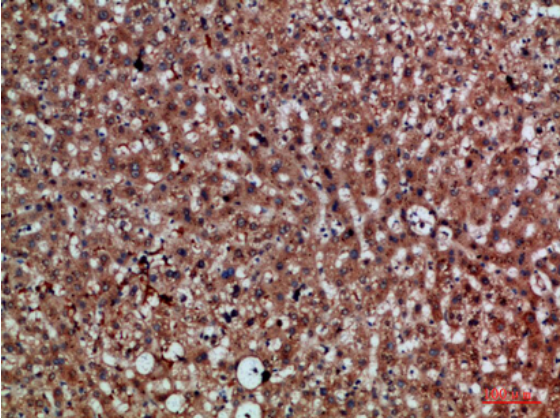
**Nanjing BYabscience technology Co.,Ltd**



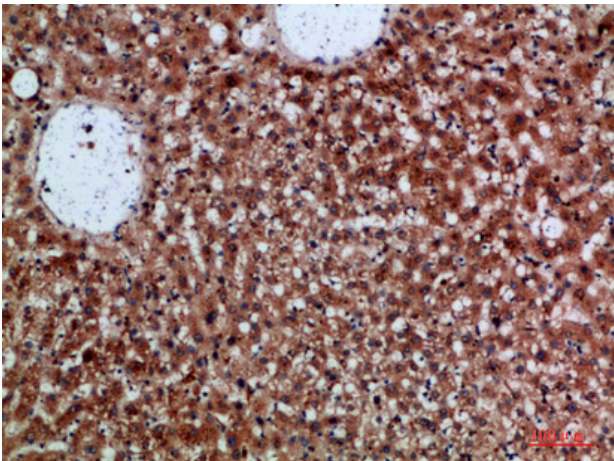
#### Usage suggestions

This product can be used in immunological reaction related experiments. For more information, please consult technical personnel.

#### Products Images



Immunohistochemical analysis of paraffin-embedded human-liver, antibody was diluted at 1:200



Immunohistochemical analysis of paraffin-embedded human-liver, antibody was diluted at 1:200