



# Artn Polyclonal Antibody

Catalog No	BYab-10695
Isotype	IgG
Reactivity	Human;Rat;Mouse;
Applications	IHC;IF;ELISA
Gene Name	ARTN EVN
Protein Name	Artemin (Enovin) (Neublastin)
Immunogen	Synthetic peptide from human protein at AA range: 101-150
Specificity	The antibody detects endogenous Artn
Formulation	Liquid in PBS containing 50% glycerol, 0.5% BSA and 0.02% sodium azide.
Source	Polyclonal, Rabbit,IgG
Purification	The antibody was affinity-purified from rabbit antiserum by affinity-chromatography using epitope-specific immunogen.
Dilution	IHC-p 1:50-200, ELISA 1:10000-20000. IF 1:50-200
Concentration	1 mg/ml
Purity	≥90%
Storage Stability	-20°C/1 year
Synonyms	Artemin (Enovin;Neublastin)
Observed Band	
Cell Pathway	Secreted .
Tissue Specificity	Ubiquitous. Expressed at high levels in peripheral tissues including prostate, placenta, pancreas, heart, kidney, pituitary gland, lung and testis. Expressed at low levels in the brain.
Function	developmental stage:Expressed during embryogenesis. High level expression seen in fetal kidney and lung while a low level expression seen in the fetal brain.,function:Ligand for the GFR-alpha-3-RET receptor complex but can also activate the GFR-alpha-1-RET receptor complex. Supports the survival of sensory and sympathetic peripheral neurons in culture and also supports the survival of dopaminergic neurons of the ventral mid-brain.,similarity:Belongs to the TGF-beta family. GDNF subfamily.,subunit:Homodimer; disulfide-linked.,tissue specificity:Ubiquitous. Expressed at high levels in peripheral tissues including prostate, placenta, pancreas, heart, kidney, pituitary gland, lung and testis. Expressed at low levels in the brain.,

Nanjing BYabscience technology Co.,Ltd

**Background**

This gene encodes a secreted ligand of the glial cell line-derived neurotrophic factor (GDNF) subfamily and TGF-beta (transforming growth factor-beta) superfamily of proteins. Ligands of this family bind various TGF-beta receptors leading to recruitment and activation of SMAD family transcription factors that regulate gene expression. The encoded preproprotein is proteolytically processed to generate each subunit of the disulfide-linked homodimer. This protein signals through the RET receptor and GFR alpha 3 coreceptor, and supports the survival of a number of peripheral neuron populations and at least one population of dopaminergic CNS neurons. This protein has also been shown to promote tumor growth, metastasis, and drug resistance in mammary carcinoma. [provided by RefSeq, Aug 2016],

**matters needing attention**

Avoid repeated freezing and thawing!

**Usage suggestions**

This product can be used in immunological reaction related experiments. For more information, please consult technical personnel.

**Nanjing BYabscience technology Co.,Ltd**

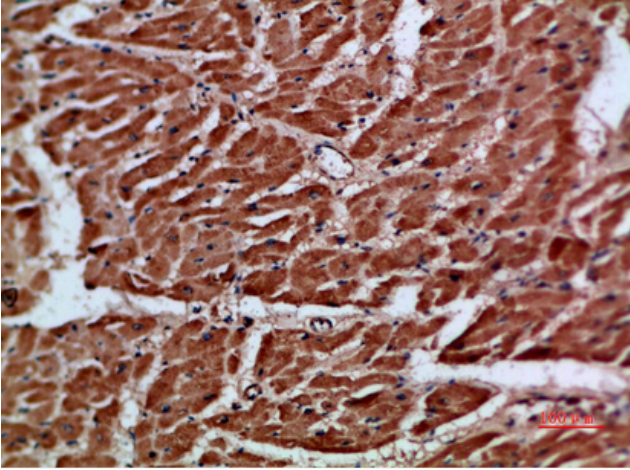
网址: [www.njbybio.com](http://www.njbybio.com)

官方热线: 025-5229-8998

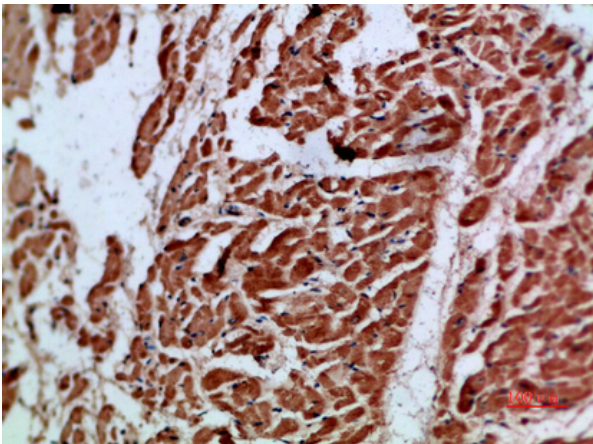
监督电话: 15950492658



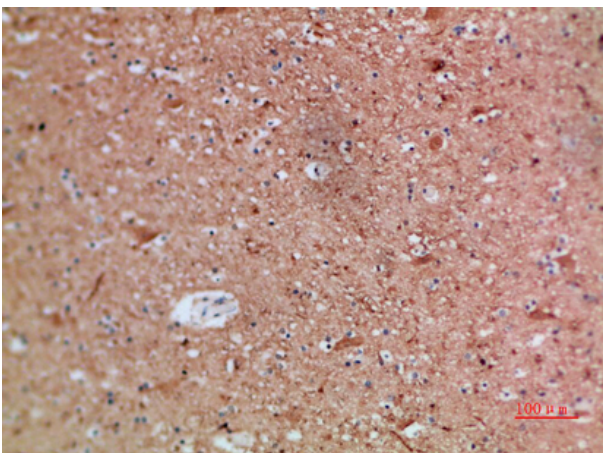
## Products Images



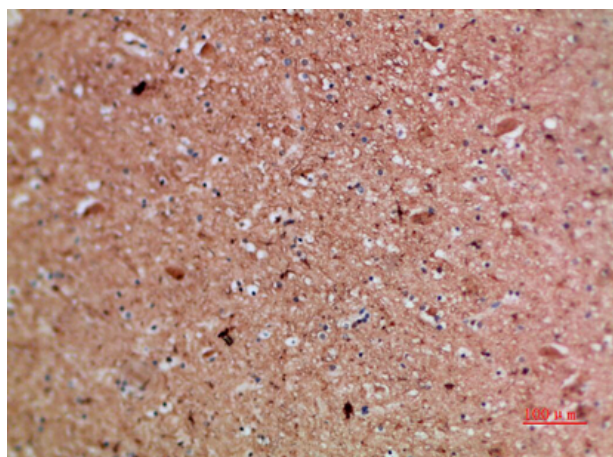
Immunohistochemical analysis of paraffin-embedded human-heart, antibody was diluted at 1:200



Immunohistochemical analysis of paraffin-embedded human-heart, antibody was diluted at 1:200



Immunohistochemical analysis of paraffin-embedded human-brain, antibody was diluted at 1:200



Immunohistochemical analysis of paraffin-embedded human-brain, antibody was diluted at 1:200