



# Gremlin-2 Polyclonal Antibody

<b>Catalog No</b>	BYab-10648
<b>Isotype</b>	IgG
<b>Reactivity</b>	Human;Mouse
<b>Applications</b>	WB;IHC;IF;ELISA
<b>Gene Name</b>	GREM2 CKTSF1B2 DAND3 PRDC
<b>Protein Name</b>	Gremlin-2 (Cysteine knot superfamily 1, BMP antagonist 2) (DAN domain family member 3) (Protein related to DAN and cerberus)
<b>Immunogen</b>	The antiserum was produced against synthesized peptide derived from the Internal region of human GREM2. AA range:71-120
<b>Specificity</b>	The antibody detects endogenous Gremlin-2
<b>Formulation</b>	Liquid in PBS containing 50% glycerol, 0.5% BSA and 0.02% sodium azide.
<b>Source</b>	Polyclonal, Rabbit,IgG
<b>Purification</b>	The antibody was affinity-purified from rabbit antiserum by affinity-chromatography using epitope-specific immunogen.
<b>Dilution</b>	WB 1:500-2000,IHC-p 1:500-200, ELISA 1:10000-20000. IF 1:50-200
<b>Concentration</b>	1 mg/ml
<b>Purity</b>	≥90%
<b>Storage Stability</b>	-20°C/1 year
<b>Synonyms</b>	Gremlin-2 (Cysteine knot superfamily 1, BMP antagonist 2;DAN domain family member 3;Protein related to DAN and cerberus)
<b>Observed Band</b>	19kD
<b>Cell Pathway</b>	Secreted .
<b>Tissue Specificity</b>	Brain,Colon,
<b>Function</b>	function:Cytokine that inhibits the activity of BMP2 and BMP4 in a dose-dependent manner. Antagonized BMP4-induced suppression of progesterone production in granulosa cells.,similarity:Belongs to the DAN family.,similarity:Contains 1 CTCK (C-terminal cystine knot-like) domain.,subunit:Interacts with BMP2 and BMP4.,
<b>Background</b>	This gene encodes a member of the BMP (bone morphogenic protein) antagonist family. Like BMPs, BMP antagonists contain cystine knots and typically form homo- and heterodimers. The CAN (cerberus and dan) subfamily of BMP antagonists, to which this gene belongs, is characterized by a C-terminal cystine

**Nanjing BYabscience technology Co.,Ltd**



knot with an eight-membered ring. The antagonistic effect of the secreted glycosylated protein encoded by this gene is likely due to its direct binding to BMP proteins. As an antagonist of BMP, this gene may play a role in regulating organogenesis, body patterning, and tissue differentiation. [provided by RefSeq, Jul 2008],

**matters needing attention**

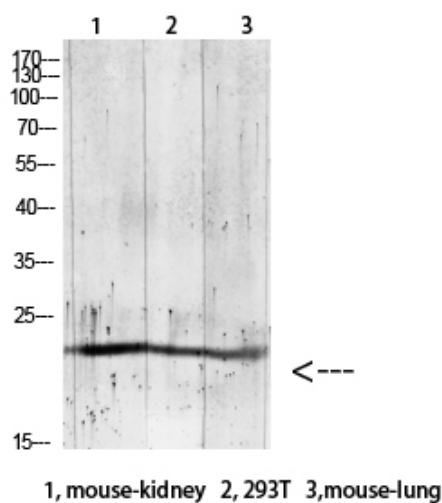
Avoid repeated freezing and thawing!

**Usage suggestions**

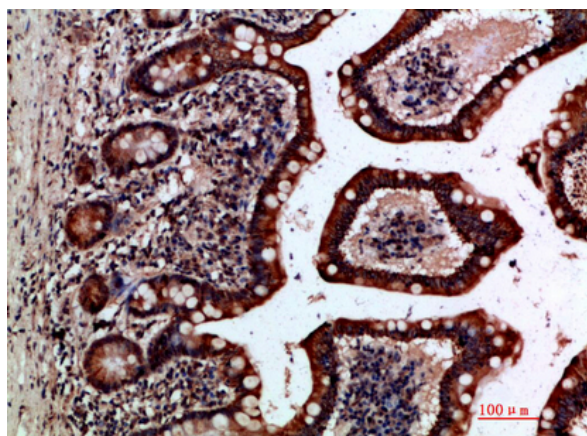
This product can be used in immunological reaction related experiments. For more information, please consult technical personnel.



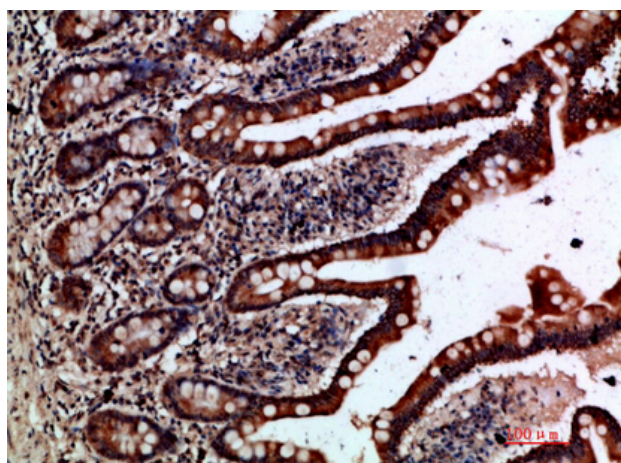
## Products Images



Western blot analysis of RAT-brain lysate, antibody was diluted at 1000. Secondary antibody(catalog#:RS0002) was diluted at 1:20000



Immunohistochemical analysis of paraffin-embedded human-small-intestine, antibody was diluted at 1:200



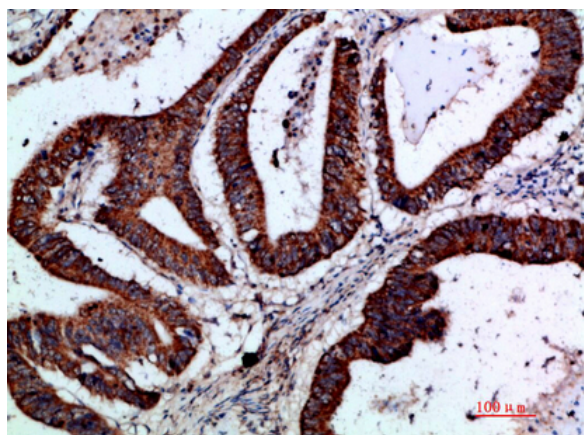
Immunohistochemical analysis of paraffin-embedded human-small-intestine, antibody was diluted at 1:200

Nanjing BYabs science technology Co.,Ltd

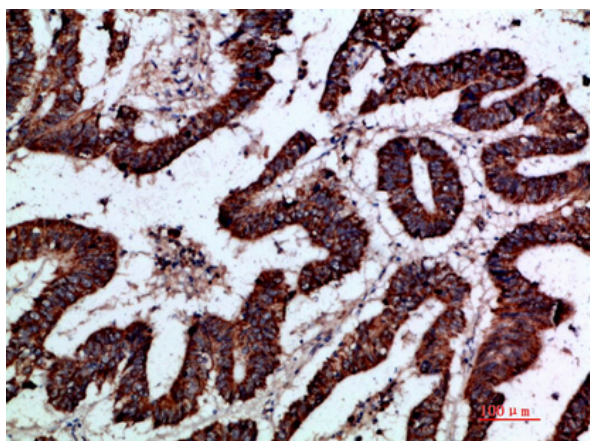
网址: [www.njbybio.com](http://www.njbybio.com)

官方热线: 025-5229-8998

监督电话: 15950492658



Immunohistochemical analysis of paraffin-embedded human-colon-cancer, antibody was diluted at 1:200



Immunohistochemical analysis of paraffin-embedded human-colon-cancer, antibody was diluted at 1:200