



IL-31 Polyclonal Antibody

Catalog No	BYab-10637
Isotype	IgG
Reactivity	Human;Rat;Mouse;
Applications	WB;IHC;IF;ELISA
Gene Name	IL31
Protein Name	Interleukin-31 (IL-31)
Immunogen	The antiserum was produced against synthesized peptide derived from the Internal region of human IL31. AA range:21-70
Specificity	The antibody detects endogenous IL-31
Formulation	Liquid in PBS containing 50% glycerol, 0.5% BSA and 0.02% sodium azide.
Source	Polyclonal, Rabbit,IgG
Purification	The antibody was affinity-purified from rabbit antiserum by affinity-chromatography using epitope-specific immunogen.
Dilution	WB 1:500-2000, IHC-p 1:50-200 ELISA 1:10000-20000. IF 1:50-200
Concentration	1 mg/ml
Purity	≥90%
Storage Stability	-20°C/1 year
Synonyms	Interleukin-31 (IL-31)
Observed Band	65kD
Cell Pathway	Secreted .
Tissue Specificity	Detected at low levels in testis, bone marrow, skeletal muscle, kidney, colon, thymus, small intestine and trachea.
Function	function:Activates STAT3 and possibly STAT1 and STAT5 through the IL31 heterodimeric receptor composed of IL31RA and OSMR. IL31 may function in skin immunity.,induction:Up-regulated in skin homing T-cells of patients with atopic dermatitis (AD) and in activated circulating T-cells. Up-regulated in lesional biopsies of patients with allergic contact dermatitis (ACD).,tissue specificity:Detected at low levels in testis, bone marrow, skeletal muscle, kidney, colon, thymus, small intestine and trachea.,
Background	IL31, which is made principally by activated Th2-type T cells, interacts with a heterodimeric receptor consisting of IL31RA (MIM 609510) and OSMR (MIM 601743) that is constitutively expressed on epithelial cells and keratinocytes. IL31

Nanjing BYabscience technology Co.,Ltd



may be involved in the promotion of allergic skin disorders and in regulating other allergic diseases, such as asthma (Dillon et al., 2004 [PubMed 15184896]).[supplied by OMIM, Mar 2008],

matters needing attention

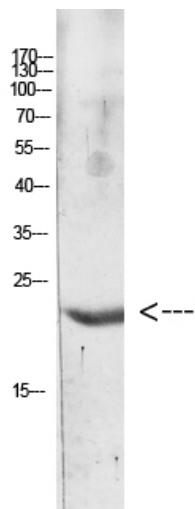
Avoid repeated freezing and thawing!

Usage suggestions

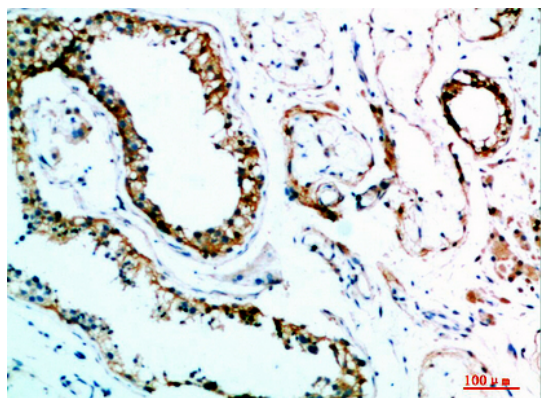
This product can be used in immunological reaction related experiments. For more information, please consult technical personnel.



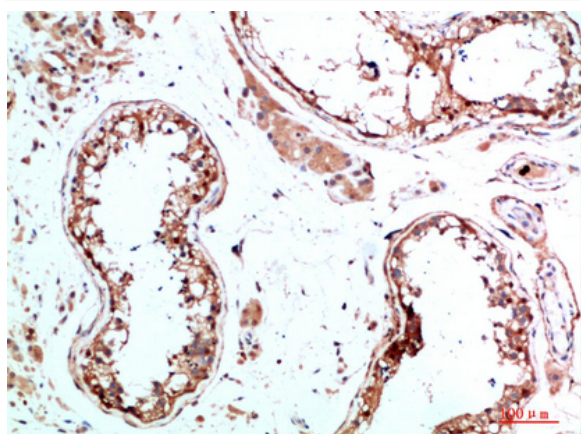
Products Images



Western blot analysis of Hela Cell Lysate using antibody. Secondary antibody(catalog#:RS0002) was diluted at 1:20000



Immunohistochemical analysis of paraffin-embedded human-testis, antibody was diluted at 1:200



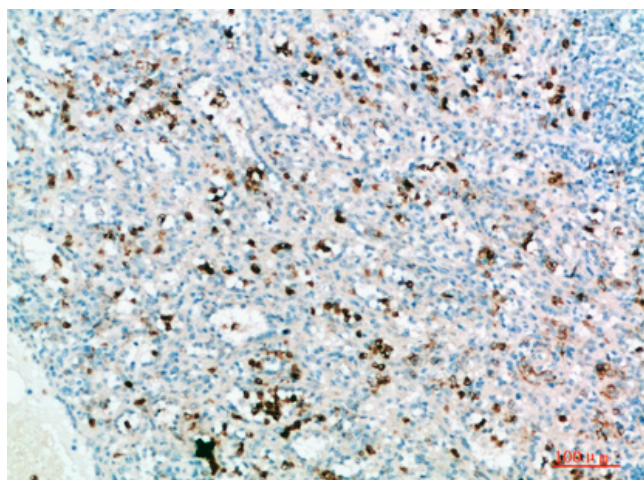
Immunohistochemical analysis of paraffin-embedded human-testis, antibody was diluted at 1:200

Nanjing BYabscience technology Co.,Ltd

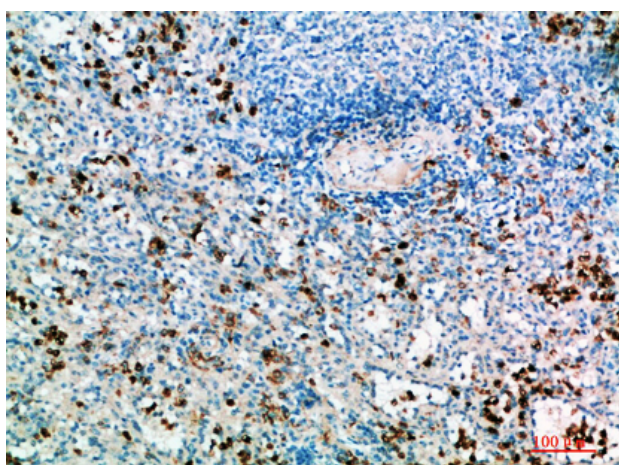
网址: www.njbybio.com

官方热线: 025-5229-8998

监督电话: 15950492658



Immunohistochemical analysis of paraffin-embedded human-spleen, antibody was diluted at 1:200



Immunohistochemical analysis of paraffin-embedded human-spleen, antibody was diluted at 1:200