



# TMPO Polyclonal Antibody

Catalog No	BYab-10630
Isotype	IgG
Reactivity	Human;Mouse;Rat
Applications	WB;ELISA
Gene Name	TMPO LAP2
Protein Name	thymopoietin
Immunogen	Synthetic peptide from human protein at AA range: 1-50
Specificity	The antibody detects endogenous TMPO protein
Formulation	Liquid in PBS containing 50% glycerol, 0.5% BSA and 0.02% sodium azide.
Source	Polyclonal, Rabbit,IgG
Purification	The antibody was affinity-purified from rabbit antiserum by affinity-chromatography using epitope-specific immunogen.
Dilution	WB 1:500-2000, ELISA 1:10000-20000
Concentration	1 mg/ml
Purity	≥90%
Storage Stability	-20°C/1 year
Synonyms	TMPO LAP2
Observed Band	75+50kD
Cell Pathway	Nucleus. Chromosome. Expressed diffusely throughout the nucleus.
Tissue Specificity	Expressed in many tissues. Most abundant in adult thymus and fetal liver.
Function	regulation of transcription,
Background	The protein encoded by TMPO (thymopoietin) resides in the nucleus and may play a role in the assembly of the nuclear lamina, and thus help maintain the structural organization of the nuclear envelope. It may function as a receptor for the attachment of lamin filaments to the inner nuclear membrane. Mutations in TMPO are associated with dilated cardiomyopathy. Alternatively spliced transcript variants encoding different isoforms have been noted for TMPO.
matters needing attention	Avoid repeated freezing and thawing!

Nanjing BYabscience technology Co.,Ltd

网址: [www.njbybio.com](http://www.njbybio.com)

官方热线: 025-5229-8998

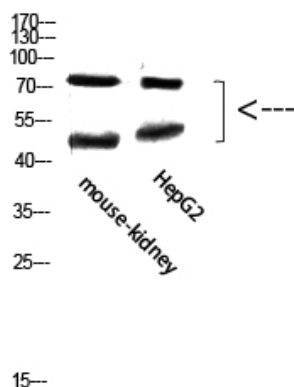
监督电话: 15950492658



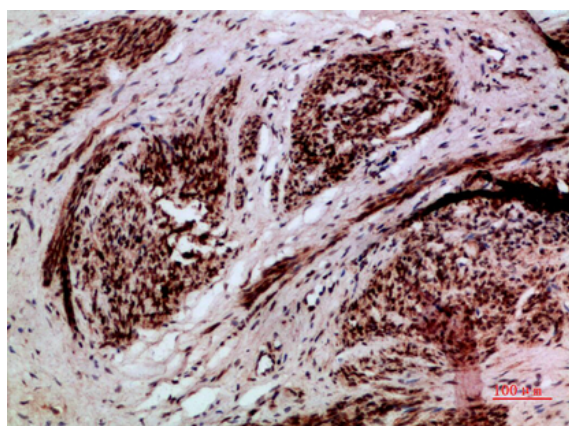
## Usage suggestions

This product can be used in immunological reaction related experiments. For more information, please consult technical personnel.

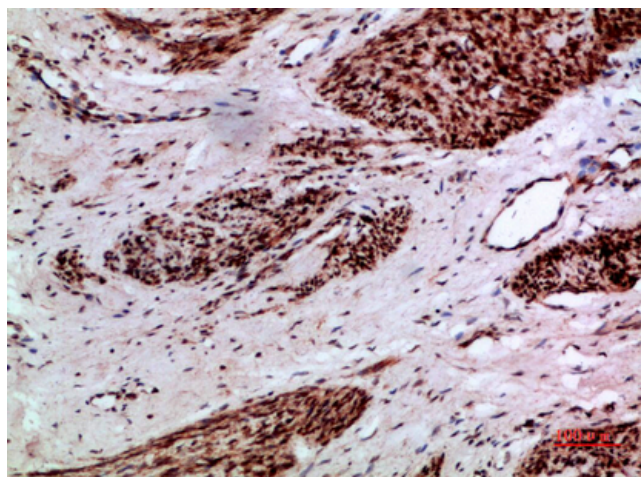
## Products Images



Western Blot analysis of mouse-kidney, hepg2 cells using Antibody diluted at 800. Secondary antibody(catalog#:RS0002) was diluted at 1:20000



Immunohistochemical analysis of paraffin-embedded human-cervical-cancer, antibody was diluted at 1:200



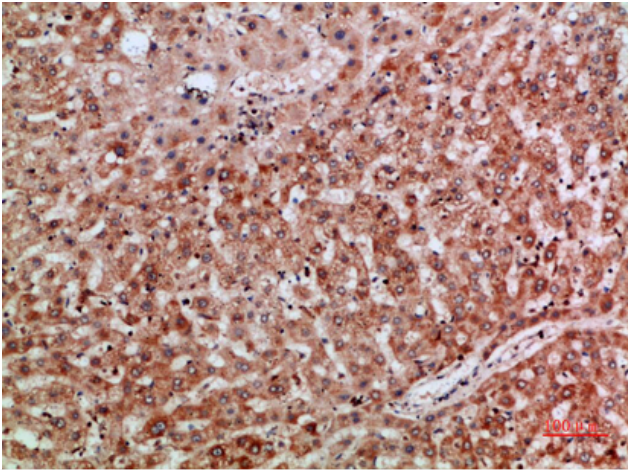
Immunohistochemical analysis of paraffin-embedded human-cervical-cancer, antibody was diluted at 1:200

**Nanjing BYabs science technology Co.,Ltd**

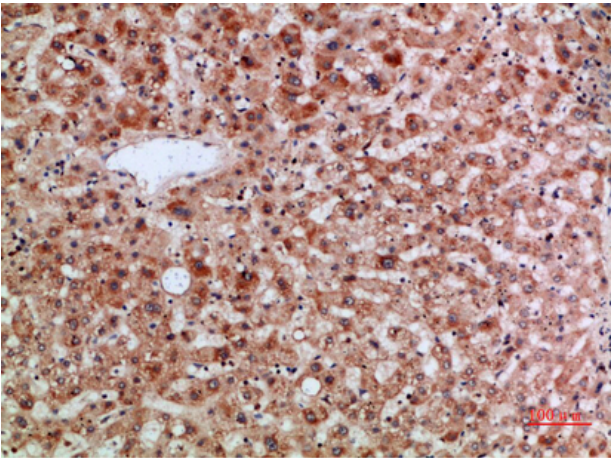
网址: [www.njbybio.com](http://www.njbybio.com)

官方热线: 025-5229-8998

监督电话: 15950492658



Immunohistochemical analysis of paraffin-embedded human-liver, antibody was diluted at 1:200



Immunohistochemical analysis of paraffin-embedded human-liver, antibody was diluted at 1:200