



CREB3 Polyclonal Antibody

Catalog No	BYab-10612
Isotype	IgG
Reactivity	Human;Mouse;Rat
Applications	WB;ELISA
Gene Name	CREB3
Protein Name	CREB3
Immunogen	The antiserum was produced against synthesized peptide derived from the Internal region of human CREB3. AA range:151-200
Specificity	CREB3 Polyclonal Antibody detects endogenous levels of CREB3
Formulation	Liquid in PBS containing 50% glycerol, 0.5% BSA and 0.02% sodium azide.
Source	Polyclonal, Rabbit,IgG
Purification	The antibody was affinity-purified from rabbit antiserum by affinity-chromatography using epitope-specific immunogen.
Dilution	WB 1:500-2000, ELISA 1:10000-20000
Concentration	1 mg/ml
Purity	≥90%
Storage Stability	-20°C/1 year
Synonyms	Cyclic AMP-responsive element-binding protein 3 (CREB-3) (cAMP-responsive element-binding protein 3) (Leucin zipper proitein) (Luman) (Transcription factor LZIP-alpha) [Cleaved into: Processed cyclic AMP-responsive element-binding protein 3 (N-terminal Luman) (Transcriptionally active form)]
Observed Band	50kD
Cell Pathway	[Isoform 1]: Endoplasmic reticulum membrane ; Single-pass type II membrane protein . Golgi apparatus . Colocalizes with HCFC1 in neuronal cell bodies of the trigeminal ganglia (PubMed:10623756). Colocalizes with DCSTAMP in the ER membrane of immature dendritic cell (DC) (PubMed:20546900). Colocalizes with CANX, CCR1, HCFC1 in the ER membrane (PubMed:10623756). .; [Isoform 2]: Nucleus . Cytoplasm . Predominantly in the nucleus (PubMed:19779205). Not associated with membranes (PubMed:19779205). .; [Processed cyclic AMP-responsive element-binding protein 3]: Nucleus. Upon RIP activation the transcriptional active processed cyclic AMP-responsive element-binding protein 3 form translocates into the nucleus. Detected in the nucleus upon dendritic cell maturation and RIP activation. Colocalizes w

Nanjing BYabscience technology Co.,Ltd



Tissue Specificity	Ubiquitously expressed (PubMed:9271389, PubMed:19779205). Expressed in dendritic cells (DC). Weakly expressed in monocytes (at protein level) (PubMed:20546900).
Function	function:Transcription factors activated upon intramembrane proteolysis (RIP), binds the cAMP response element (CRE) (consensus: 5'-GTGACGT[AG][AG]-3'), a sequence present in many viral and cellular promoters. Binds to and requires HCFC1 as a coactivator. Activity and expression are suppressed when the HCFC1-CREB3 complex binds with CREBZF. Participates in LKN-1/CCL15-induced chemotaxis signaling.,PTM:During activation, an approximative 40 kDa fragment containing the cytoplasmic transcription factor domain is released by proteolysis. The cleavage is probably performed sequentially by site-1 and site-2 proteases.,PTM:N-glycosylated.,similarity:Belongs to the bZIP family. ATF subfamily.,similarity:Contains 1 bZIP domain.,subcellular location:Under activation the cleaved N-terminal cytoplasmic domain translocates into the nucleus.,subunit:Interacts with CCR1. Interacts with HCFC1; required
Background	This gene encodes a transcription factor that is a member of the leucine zipper family of DNA binding proteins. This protein binds to the cAMP-response element and regulates cell proliferation. The protein interacts with host cell factor C1, which also associates with the herpes simplex virus (HSV) protein VP16 that induces transcription of HSV immediate-early genes. This protein and VP16 both bind to the same site on host cell factor C1. It is thought that the interaction between this protein and host cell factor C1 plays a role in the establishment of latency during HSV infection. This protein also plays a role in leukocyte migration, tumor suppression, and endoplasmic reticulum stress-associated protein degradation. Additional transcript variants have been identified, but their biological validity has not been determined.[provided by RefSeq, Nov 2009],
matters needing attention	Avoid repeated freezing and thawing!
Usage suggestions	This product can be used in immunological reaction related experiments. For more information, please consult technical personnel.

Nanjing BYabscience technology Co.,Ltd

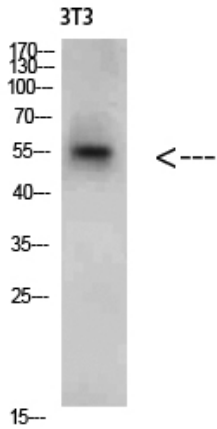
网址: www.njbybio.com

官方热线: 025-5229-8998

监督电话: 15950492658



Products Images



Western Blot analysis of 3T3 cells using CREB3 Polyclonal Antibody diluted at 1:2000. Secondary antibody(catalog#:RS0002) was diluted at 1:20000