



EIF6 (Phospho-Ser235) rabbit pAb

Catalog No	BYab-10499
Isotype	IgG
Reactivity	Human; Mouse;Rat
Applications	WB
Gene Name	EIF6 EIF3A ITGB4BP OK/SW-cl.27
Protein Name	EIF6 (Phospho-Ser235)
Immunogen	Synthesized peptide derived from human EIF6 (Phospho-Ser235)
Specificity	This antibody detects endogenous levels of EIF6 (Phospho-Ser235) at Human, Mouse,Rat
Formulation	Liquid in PBS containing 50% glycerol, and 0.155% sodium azide.
Source	Polyclonal, Rabbit,IgG
Purification	The antibody was affinity-purified from rabbit serum by affinity-chromatography using specific immunogen.
Dilution	WB 1:500-2000
Concentration	1 mg/ml
Purity	≥90%
Storage Stability	-20°C/1 year
Synonyms	Eukaryotic translation initiation factor 6 (eIF-6) (B(2)GCN homolog) (B4 integrin interactor) (CAB) (p27(BBP))
Observed Band	
Cell Pathway	Cytoplasm. Nucleus, nucleolus. Shuttles between cytoplasm and nucleus/nucleolus.
Tissue Specificity	Expressed at very high levels in colon carcinoma with lower levels in normal colon and ileum and lowest levels in kidney and muscle (at protein level).
Function	function: Binds to the 60S ribosomal subunit and prevents its association with the 40S ribosomal subunit to form the 80S initiation complex.,similarity: Belongs to the eIF-6 family.,subunit: Monomer.,
Background	Hemidesmosomes are structures which link the basal lamina to the intermediate filament cytoskeleton. An important functional component of hemidesmosomes is the integrin beta-4 subunit (ITGB4), a protein containing two fibronectin type III domains. The protein encoded by this gene binds to the fibronectin type III domains of ITGB4 and may help link ITGB4 to the intermediate filament cytoskeleton. The encoded protein, which is insoluble and found both in the nucleus and in the cytoplasm, can function as a translation initiation factor and

Nanjing BYabscience technology Co.,Ltd



prevent the association of the 40S and 60S ribosomal subunits. Multiple non-protein coding transcript variants and variants encoding two different isoforms have been found for this gene. [provided by RefSeq, Jun 2012],

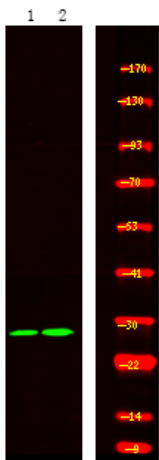
matters needing attention

Avoid repeated freezing and thawing!

Usage suggestions

This product can be used in immunological reaction related experiments. For more information, please consult technical personnel.

Products Images



Western Blot analysis of 1 HeLa cell, 2 LPS 100ng/mL 30min treated ,using primary antibody at 1:1000 dilution. Secondary antibody(catalog#:RS23920) was diluted at 1:10000