



Bovine Serum Albumin Polyclonal Antibody

Catalog No	BYab-10285
Isotype	IgG
Reactivity	Cow
Applications	WB;ELISA
Gene Name	
Protein Name	
Immunogen	Recombinant Protein of Bovine Serum Albumin
Specificity	The antibody detects endogenous BSA protein.
Formulation	PBS, pH 7.4, containing 0.5%BSA, 0.02% sodium azide as Preservative and 50% Glycerol.
Source	Polyclonal, Rabbit,IgG
Purification	The antibody was affinity-purified from rabbit antiserum by affinity-chromatography using specific immunogen.
Dilution	WB: 1:2000-5000
Concentration	1 mg/ml
Purity	≥90%
Storage Stability	-20°C/1 year
Synonyms	YM3253
Observed Band	66kD
Cell Pathway	
Tissue Specificity	
Function	
Background	Bovine serum albumin (BSA) is the main protein synthesized in the liver that constitutes over 50% of total serum proteins. BSA is often used as a protein standard and can also be used in cell culture media, forensics, and foodstuffs.
matters needing attention	Avoid repeated freezing and thawing!

Nanjing BYabscience technology Co.,Ltd

网址: www.njbybio.com

官方热线: 025-5229-8998

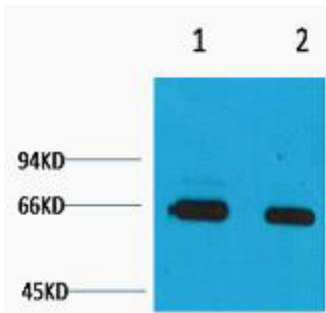
监督电话: 15950492658



Usage suggestions

This product can be used in immunological reaction related experiments. For more information, please consult technical personnel.

Products Images



Western blot analysis of Bovine Serum Albumin, Rabbit pAb diluted at 1) 1:2000 2) 1:5000. Secondary antibody(catalog#:RS0002) was diluted at 1:20000

Nanjing BYabs science technology Co.,Ltd

网址: www.njbybio.com

官方热线: 025-5229-8998

监督电话: 15950492658