



RFP-Tag Polyclonal Antibody

Catalog No	BYab-10268
Isotype	IgG
Reactivity	Species independent
Applications	WB
Gene Name	
Protein Name	
Immunogen	Recombinant Protein of RFP-Tag
Specificity	The antibody detects RFP tag fusion proteins.
Formulation	PBS, pH 7.4, containing 0.5%BSA, 0.02% sodium azide as Preservative and 50% Glycerol.
Source	Polyclonal, Rabbit,IgG
Purification	The antibody was affinity-purified from rabbit antiserum by affinity-chromatography using specific immunogen.
Dilution	WB: 1:5000
Concentration	1 mg/ml
Purity	≥90%
Storage Stability	-20°C/1 year
Synonyms	YM3208
Observed Band	
Cell Pathway	
Tissue Specificity	
Function	
Background	Red Fluorescent Protein (RFP) is isolated from sea anemone (Discosoma sp), and commonly used as a molecular tag to study protein localization, reporter gene expression, and protein-protein interactions. Although it exists as a homotetramer, monomeric variants have been constructed for use in various applications.
matters needing attention	Avoid repeated freezing and thawing!

Nanjing BYabscience technology Co.,Ltd

网址: www.njbybio.com

官方热线: 025-5229-8998

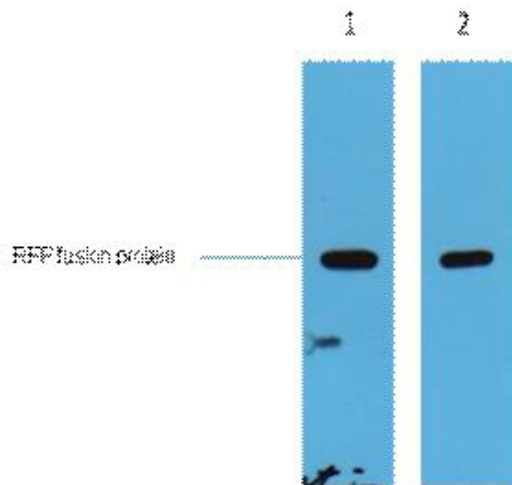
监督电话: 15950492658



Usage suggestions

This product can be used in immunological reaction related experiments. For more information, please consult technical personnel.

Products Images



2ug RFP fusion protein+ Primary antibody dilution at
1) 1:5000 2) 1:20000. Secondary
antibody(catalog#:RS0002) was diluted at 1:20000