



FOXG1 rabbit pAb

Catalog No	BYab-08275
Isotype	IgG
Reactivity	Human; Mouse;Rat
Applications	WB
Gene Name	FOXG1 FKH2 FKHL1 FKHL2 FKHL3 FKHL4 FOXG1A FOXG1B FOXG1C
Protein Name	FOXG1
Immunogen	Synthesized peptide derived from human FOXG1 AA range: 247-297
Specificity	This antibody detects endogenous levels of FOXG1 at Human/Mouse/Rat
Formulation	Liquid in PBS containing 50% glycerol, 0.5% BSA and 0.02% sodium azide.
Source	Polyclonal, Rabbit,IgG
Purification	The antibody was affinity-purified from rabbit serum by affinity-chromatography using specific immunogen.
Dilution	WB 1: 500-2000
Concentration	1 mg/ml
Purity	≥90%
Storage Stability	-20°C/1 year
Synonyms	
Observed Band	
Cell Pathway	Nucleus .
Tissue Specificity	Expression is restricted to the neurons of the developing telencephalon.
Function	caution:PubMed:7959731 claims that there are 3 different FOXG1 proteins, FOXG1A, FOXG1B, and FOXG1C. It was latter found that there is only one gene and the differences between these three may be sequencing errors since the protein is coded in a unique exon.,function:Transcription repression factor which plays an important role in the establishment of the regional subdivision of the developing brain and in the development of the telencephalon.,similarity:Contains 1 fork-head DNA-binding domain.,subunit:Interacts with KDM5B.,tissue specificity:Expression is restricted to the neurons of the developing telencephalon.,
Background	This locus encodes a member of the forked-head transcription factor family. The encoded protein, which functions as a repressor, may play a role in brain

Nanjing BYabscience technology Co.,Ltd



development. Mutations at this locus have been associated with Rett syndrome. [provided by RefSeq, Feb 2012],

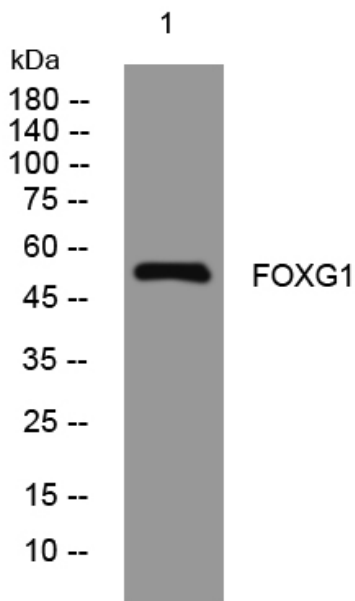
matters needing attention

Avoid repeated freezing and thawing!

Usage suggestions

This product can be used in immunological reaction related experiments. For more information, please consult technical personnel.

Products Images



Western blot analysis of lysates from 293T cells, primary antibody was diluted at 1:1000, 4° over night