



ADA11 rabbit pAb

Catalog No	BYab-08212
Isotype	IgG
Reactivity	Human; Mouse
Applications	WB
Gene Name	ADAM11 MDC
Protein Name	ADA11
Immunogen	Synthesized peptide derived from human ADA11 AA range: 600-650
Specificity	This antibody detects endogenous levels of ADA11 at Human/Mouse
Formulation	Liquid in PBS containing 50% glycerol, 0.5% BSA and 0.327% sodium azide.
Source	Polyclonal, Rabbit,IgG
Purification	The antibody was affinity-purified from rabbit serum by affinity-chromatography using specific immunogen.
Dilution	WB 1:500-2000
Concentration	1 mg/ml
Purity	≥90%
Storage Stability	-20°C/1 year
Synonyms	Disintegrin and metalloproteinase domain-containing protein 11 (ADAM 11) (Metalloproteinase-like, disintegrin-like, and cysteine-rich protein) (MDC)
Observed Band	85kD
Cell Pathway	Membrane; Single-pass type I membrane protein.
Tissue Specificity	Expressed predominantly in brain. Slightly detected or not at all in other tissues.
Function	disease:Rearrangements occur in breast and ovarian cancers which involve multiple exons and disrupt the coding region.,domain:A conserved motif [AVN[ED]CD] within the disintegrin-like domain could be involved in the binding to the integrin receptor.,function:Probable ligand for integrin in the brain. This is a non catalytic metalloprotease-like protein.,PTM:The precursor is cleaved by a furin endopeptidase.,similarity:Contains 1 disintegrin domain.,similarity:Contains 1 EGF-like domain.,similarity:Contains 1 peptidase M12B domain.,tissue specificity:Expressed predominantly in brain. Slightly detected or not at all in other tissues.,

Nanjing BYabscience technology Co.,Ltd



Background

This gene encodes a member of the ADAM (a disintegrin and metalloprotease) protein family. Members of this family are membrane-anchored proteins structurally related to snake venom disintegrins, and have been implicated in a variety of biological processes involving cell-cell and cell-matrix interactions, including fertilization, muscle development, and neurogenesis. The encoded preproprotein is proteolytically processed to generate the mature protease. This gene represents a candidate tumor suppressor gene for human breast cancer based on its location within a minimal region of chromosome 17q21 previously defined by tumor deletion mapping. Alternative splicing results in multiple transcript variants, at least one of which encodes an isoform that is proteolytically processed. [provided by RefSeq, Jan 2016],

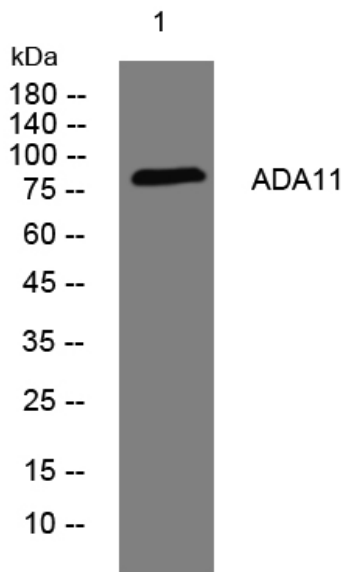
matters needing attention

Avoid repeated freezing and thawing!

Usage suggestions

This product can be used in immunological reaction related experiments. For more information, please consult technical personnel.

Products Images



Western blot analysis of lysates from HpeG2 cells, primary antibody was diluted at 1:1000, 4° over night