



# EIF1 Polyclonal Antibody

Catalog No	BYab-07779
Isotype	IgG
Reactivity	Human;Mouse
Applications	WB;ELISA
Gene Name	EIF1 SUI1
Protein Name	Eukaryotic translation initiation factor 1 (eIF1) (A121) (Protein translation factor SUI1 homolog) (Sui1iso1)
Immunogen	Synthesized peptide derived from part region of human protein AA range: 1-50
Specificity	EIF1 Polyclonal Antibody detects endogenous levels of protein.
Formulation	Liquid in PBS containing 50% glycerol, and 0.02% sodium azide.
Source	Polyclonal, Rabbit,IgG
Purification	The antibody was affinity-purified from rabbit antiserum by affinity-chromatography using epitope-specific immunogen.
Dilution	WB 1:500-2000 ELISA 1:5000-20000
Concentration	1 mg/ml
Purity	≥90%
Storage Stability	-20°C/1 year
Synonyms	
Observed Band	12kD
Cell Pathway	nucleus,cytoplasm,
Tissue Specificity	Brain,Eye,Liver,Lung,
Function	function:Necessary for scanning and involved in initiation site selection. Promotes the assembly of 48S ribosomal complexes at the authentic initiation codon of a conventional capped mRNA.,similarity:Belongs to the SUI1 family.,subunit:Interacts with RENT2.,
Background	function:Necessary for scanning and involved in initiation site selection. Promotes the assembly of 48S ribosomal complexes at the authentic initiation codon of a conventional capped mRNA.,similarity:Belongs to the SUI1 family.,subunit:Interacts with RENT2.,
matters needing attention	Avoid repeated freezing and thawing!

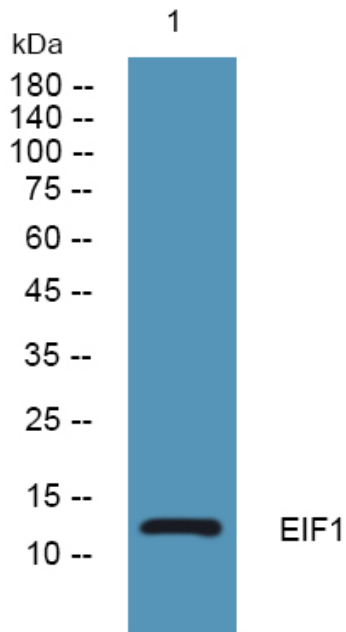
Nanjing BYabscience technology Co.,Ltd



## Usage suggestions

This product can be used in immunological reaction related experiments. For more information, please consult technical personnel.

## Products Images



Western blot analysis of lysates from SW480 cells, primary antibody was diluted at 1:1000, 4° over night