



OCLN Polyclonal Antibody

Catalog No	BYab-07715
Isotype	IgG
Reactivity	Human;Mouse;Rat
Applications	WB IF;ELISA
Gene Name	OCLN
Protein Name	Occludin;OCN
Immunogen	Synthesized peptide derived from part region of human protein. AA350-400
Specificity	OCLN Polyclonal Antibody detects endogenous levels of protein.
Formulation	Liquid in PBS containing 50% glycerol, and 0.02% sodium azide.
Source	Polyclonal, Rabbit,IgG
Purification	The antibody was affinity-purified from rabbit antiserum by affinity-chromatography using epitope-specific immunogen.
Dilution	WB 1:500-2000 IF 1:100-300 ELISA 1:5000-20000 Not yet tested in other applications.
Concentration	1 mg/ml
Purity	≥90%
Storage Stability	-20°C/1 year
Synonyms	
Observed Band	57kD
Cell Pathway	Cell membrane ; Multi-pass membrane protein . Cell junction, tight junction .
Tissue Specificity	Localized at tight junctions of both epithelial and endothelial cells. Highly expressed in kidney. Not detected in testis.
Function	protein complex assembly, cellular amino acid derivative metabolic process, sulfur metabolic process, nucleoside metabolic process, ribonucleoside metabolic process, purine nucleoside metabolic process, macromolecular complex subunit organization, purine ribonucleoside metabolic process, S-adenosylhomocysteine metabolic process, S-adenosylmethionine metabolic process, macromolecular complex assembly, protein complex biogenesis,
Background	This gene encodes an integral membrane protein that is required for cytokine-induced regulation of the tight junction paracellular permeability barrier. Mutations in this gene are thought to be a cause of band-like calcification with simplified gyration and polymicrogyria (BLC-PMG), an autosomal recessive

Nanjing BYabs science technology Co.,Ltd



neurologic disorder that is also known as pseudo-TORCH syndrome. Alternative splicing results in multiple transcript variants. A related pseudogene is present 1.5 Mb downstream on the q arm of chromosome 5. [provided by RefSeq, Apr 2011],

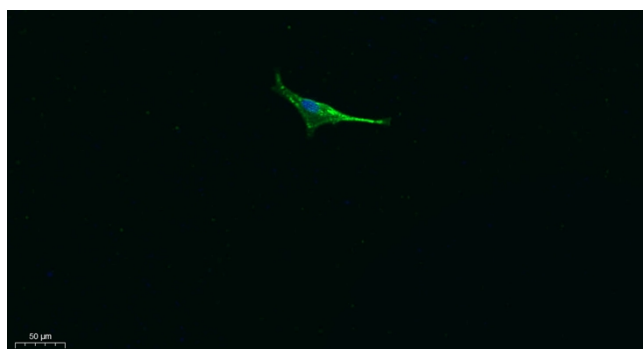
matters needing attention

Avoid repeated freezing and thawing!

Usage suggestions

This product can be used in immunological reaction related experiments. For more information, please consult technical personnel.

Products Images



Immunofluorescence analysis of A549. 1,primary Antibody was diluted at 1:200(4°C overnight). 2, Goat Anti Rabbit IgG (H&L) - Alexa Fluor 488 Secondary antibody was diluted at 1:1000(room temperature, 50min).3, Picture B: DAPI(blue) 10min.