



SSR3 Polyclonal Antibody

Catalog No	BYab-07394
Isotype	IgG
Reactivity	Human;Rat;Mouse;
Applications	WB;ELISA
Gene Name	SSTR3
Protein Name	Somatostatin receptor type 3 (SS-3-R) (SS3-R) (SS3R) (SSR-28)
Immunogen	Synthesized peptide derived from human protein . at AA range: 340-420
Specificity	SSR3 Polyclonal Antibody detects endogenous levels of protein.
Formulation	Liquid in PBS containing 50% glycerol, and 0.02% sodium azide.
Source	Polyclonal, Rabbit,IgG
Purification	The antibody was affinity-purified from rabbit antiserum by affinity-chromatography using epitope-specific immunogen.
Dilution	WB 1:500-2000 ELISA 1:5000-20000
Concentration	1 mg/ml
Purity	≥90%
Storage Stability	-20°C/1 year
Synonyms	
Observed Band	45kD
Cell Pathway	Cell membrane ; Multi-pass membrane protein . Internalized into endoplasmic vesicles upon somatostatin-stimulation. .
Tissue Specificity	Brain, pituitary and pancreas.
Function	function:Receptor for somatostatins-14 and -28. This receptor is coupled via pertussis toxin sensitive G proteins to inhibition of adenylyl cyclase.,PTM:Phosphorylated. Phosphorylation increases upon somatostatin binding.,similarity:Belongs to the G-protein coupled receptor 1 family.,subcellular location:Internalized into endoplasmic vesicles upon somatostatin-stimulation.,tissue specificity:Brain, pituitary and pancreas.,
Background	This gene encodes a member of the somatostatin receptor protein family. Somatostatins are peptide hormones that regulate diverse cellular functions such as neurotransmission, cell proliferation, and endocrine signaling as well as inhibiting the release of many hormones and other secretory proteins. Somatostatin has two active forms of 14 and 28 amino acids. The biological

Nanjing BYabscience technology Co.,Ltd



effects of somatostatins are mediated by a family of G-protein coupled somatostatin receptors that are expressed in a tissue-specific manner. Somatostatin receptors form homodimers and heterodimers with other members of the superfamily as well as with other G-protein coupled receptors and receptor tyrosine kinases. This protein is functionally coupled to adenylyl cyclase. Alternate splicing results in multiple transcript variants. [provided by RefSeq, Jul 2013],

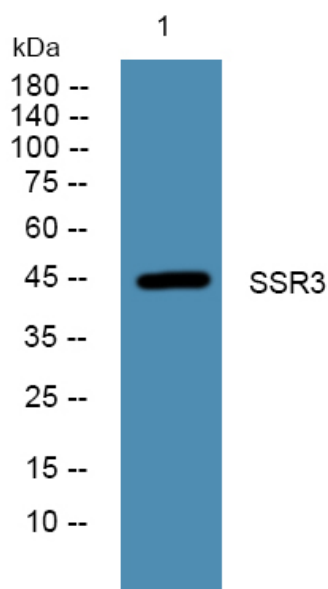
matters needing attention

Avoid repeated freezing and thawing!

Usage suggestions

This product can be used in immunological reaction related experiments. For more information, please consult technical personnel.

Products Images



Western blot analysis of lysates from A431 cells, primary antibody was diluted at 1:1000, 4° over night