



GPR45 Polyclonal Antibody

Catalog No	BYab-07382
Isotype	IgG
Reactivity	Human;Mouse
Applications	WB;ELISA
Gene Name	GPR45
Protein Name	Probable G-protein coupled receptor 45 (PSP24-1) (PSP24-alpha)
Immunogen	Synthesized peptide derived from human protein . at AA range: 110-190
Specificity	GPR45 Polyclonal Antibody detects endogenous levels of protein.
Formulation	Liquid in PBS containing 50% glycerol, and 0.02% sodium azide.
Source	Polyclonal, Rabbit,IgG
Purification	The antibody was affinity-purified from rabbit antiserum by affinity-chromatography using epitope-specific immunogen.
Dilution	WB 1:500-2000 ELISA 1:5000-20000
Concentration	1 mg/ml
Purity	≥90%
Storage Stability	-20°C/1 year
Synonyms	
Observed Band	40kD
Cell Pathway	Cell membrane; Multi-pass membrane protein.
Tissue Specificity	Expressed in brain; detected in the basal forebrain, frontal cortex, and caudate, but not in thalamus, hippocampus, or putamen.
Function	function:Orphan receptor. May play a role in brain function.,similarity:Belongs to the G-protein coupled receptor 1 family.,tissue specificity:Expressed in brain; detected in the basal forebrain, frontal cortex, and caudate, but not in thalamus, hippocampus, or putamen.,
Background	This intronless gene encodes a member of the G protein-coupled receptor (GPCR) family. Members of this protein family contain seven putative transmembrane domains and may mediate signaling processes to the interior of the cell via activation of heterotrimeric G proteins. This protein may function in the central nervous system. [provided by RefSeq, Jul 2008],

Nanjing BYabscience technology Co.,Ltd



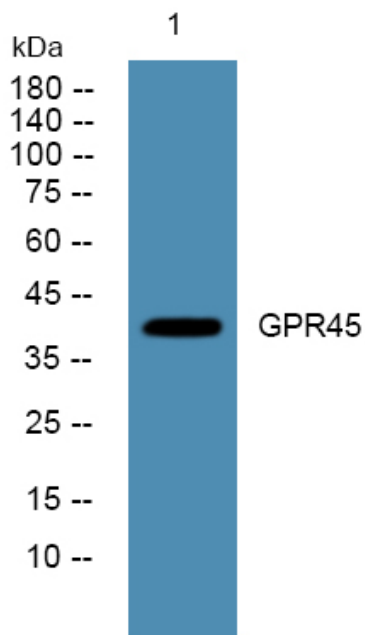
matters needing attention

Avoid repeated freezing and thawing!

Usage suggestions

This product can be used in immunological reaction related experiments. For more information, please consult technical personnel.

Products Images



Western blot analysis of lysates from Jarkat cells, primary antibody was diluted at 1:1000, 4°over night